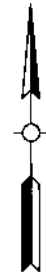


VICINITY MAP

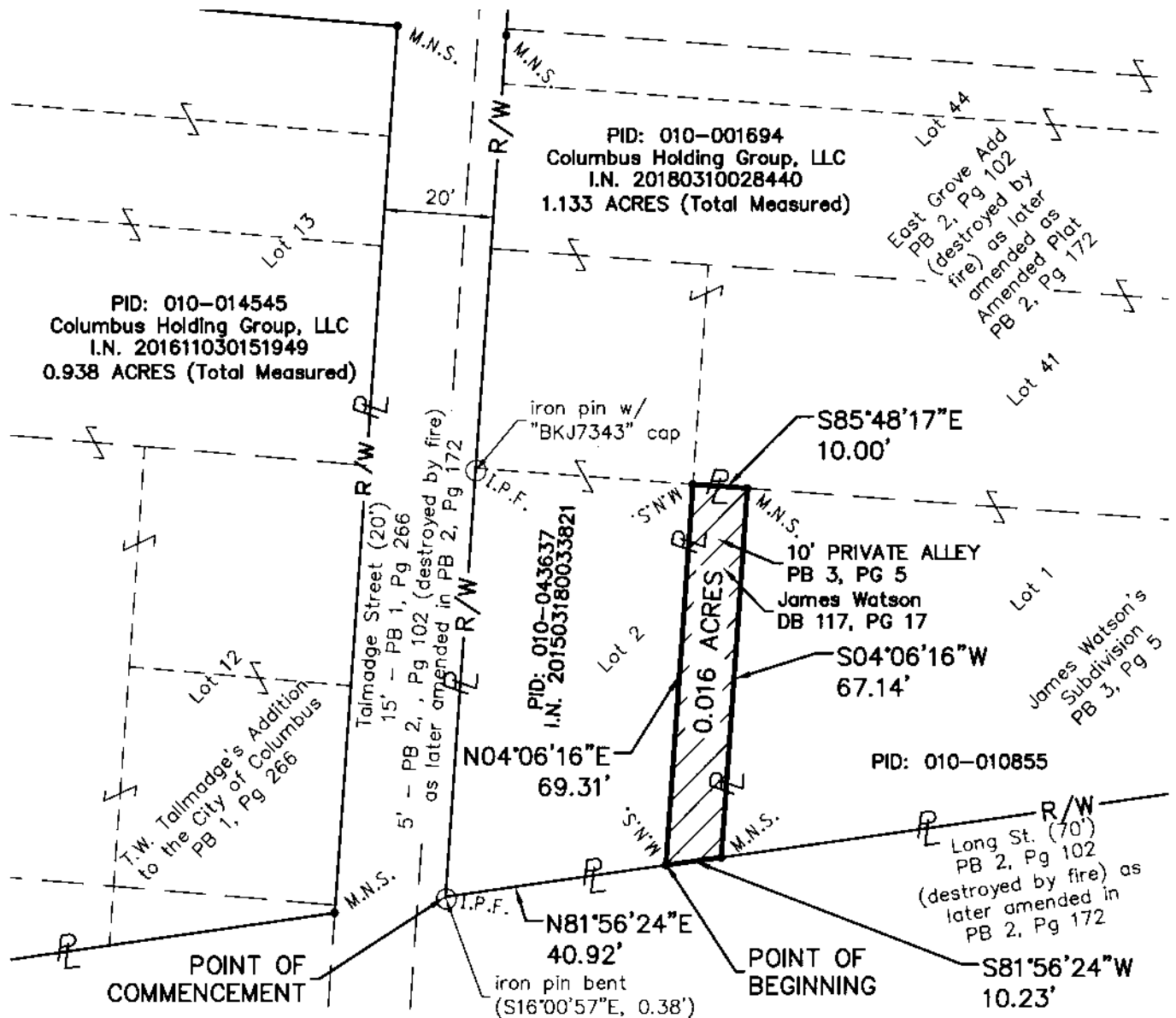
not to scale

State of Ohio, County of Franklin,
City of Columbus
Half Section 13, Section 10,
Township 5, Range 22
Refugee Lands



0 15' 30'
SCALE: 1"=30'

- I.P.S. $\frac{5}{8}$ " iron pin set w/ "ASI-PS 8438" cap
- M.N.S. Mag nail set
- I.P.F. $\frac{5}{8}$ " iron pin found



BASIS OF BEARINGS

Bearings described hereon are based on North 81 degrees 56 minutes 24 seconds East for Long Street, measured from Grid North, referenced to the Ohio State Plane Coordinate System (South Zone) and the North American Datum of 1983 (2011 Adjustment), as established utilizing a GPS survey and an NGS OPUS solution.

I hereby certify that:

This drawing represents the results of an actual field survey of the premises performed by American Structurepoint, Inc., and is true and correct to the best of my knowledge and belief.

Brian P. Bingham
Brian P. Bingham, P.S. No. 8438
American Structurepoint, Inc.

12/17/2013
Date



0.016 ACRE EXHIBIT
FOR
COLUMBUS HOLDING GROUP, LLC.
COLUMBUS, FRANKLIN COUNTY, OHIO

DATE:	12/17/2013
DRAWN BY:	ATJ
CHECKED BY:	BPB
JOB NUMBER:	2017.01763

1 OF 1

AMERICAN
STRUCTUREPOINT
INC.

2550 Corporate Exchange Drive | Suite 300
Columbus, Ohio 43231
TEL 614 961-2235 | FAX 614 961-2236
www.structurepoint.com

PLOT DATE: 12/17/2013 8:50 AM
DRAWN BY: ATJ
CHECKED BY: BPB
DATE: 12/17/2013