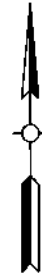


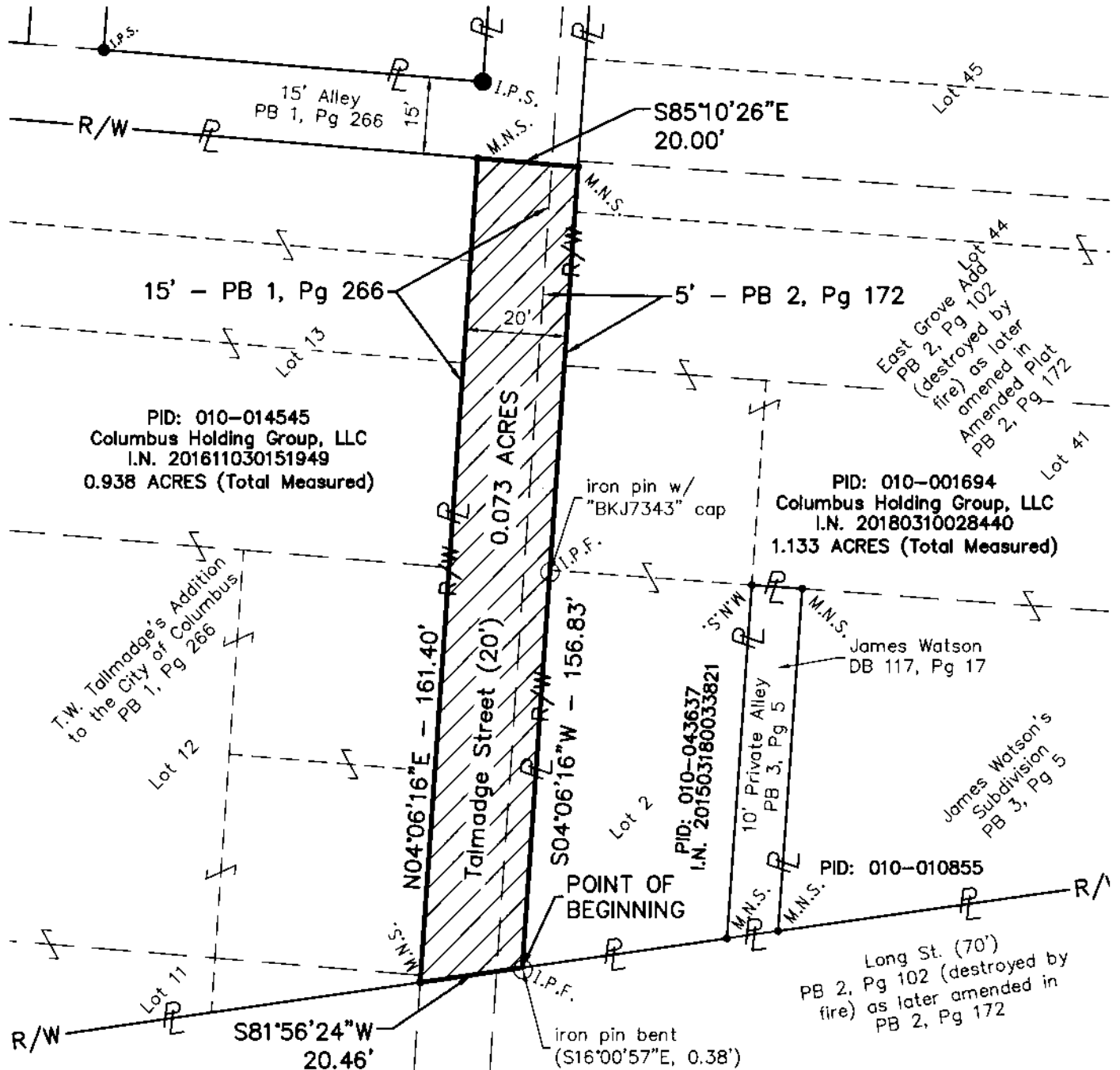
VICINITY MAP  
not to scale

State of Ohio, County of Franklin,  
City of Columbus  
Half Section 13, Section 10,  
Township 5, Range 22  
Refugee Lands



0 15' 30'  
SCALE: 1"=30'

- I.P.S.  $\frac{5}{8}$ " iron pin set w/ "ASI-PS 8438" cap
- M.N.S. Mag nail set
- I.P.F.  $\frac{5}{8}$ " iron pin found



PID: 010-014545  
Columbus Holding Group, LLC  
I.N. 201611030151949  
0.938 ACRES (Total Measured)

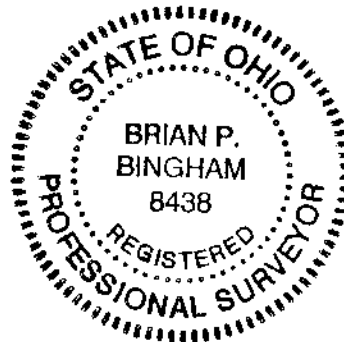
PID: 010-001694  
Columbus Holding Group, LLC  
I.N. 20180310028440  
1.133 ACRES (Total Measured)

**BASIS OF BEARINGS**

Bearings described hereon are based on North 81 degrees 56 minutes 24 seconds East for Long Street, measured from Grid North, referenced to the Ohio State Plane Coordinate System (South Zone) and the North American Datum of 1983 (2011 Adjustment), as established utilizing a GPS survey and an NGS OPUS solution.

I hereby certify that:  
This drawing represents the results of an actual field survey of the premises performed by American Structurepoint, Inc., and is true and correct to the best of my knowledge and belief.

*Brian P. Bingham* 12/17/2018  
Brian P. Bingham, P.S. No. 8438 Date  
American Structurepoint, Inc.



0.073 ACRE EXHIBIT  
FOR  
COLUMBUS HOLDING GROUP, LLC.  
COLUMBUS, FRANKLIN COUNTY, OHIO

DATE:	12/17/2018
DRAWN BY:	ATJ
CHECKED BY:	BPB
JOB NUMBER:	2017.01763

1 OF 1

AMERICAN  
**STRUCTUREPOINT**  
INC.

2550 Corporate Exchange Drive | Suite 300  
Columbus, Ohio 43231  
TEL 614.901.2235 | FAX 614.901.2236  
www.structurepoint.com