



Evans, Mechwart, Hambleton & Tilton, Inc.
Engineers • Surveyors • Planners • Scientists
5500 New Albany Road, Columbus, OH 43054
Phone: 614.775.4500 Toll Free: 888.775.3648
emht.com

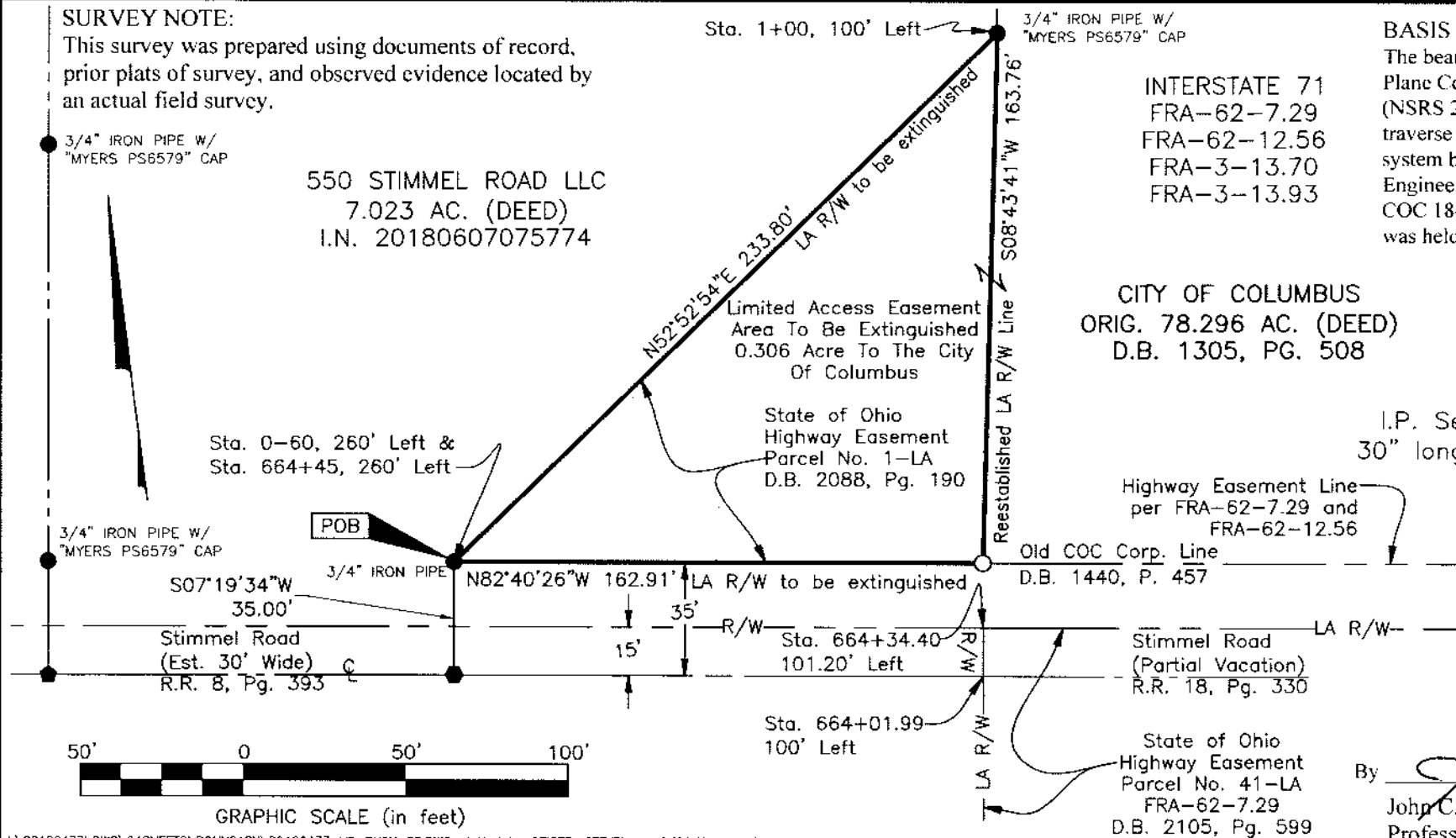
LIMITED ACCESS EASEMENT AREA TO BE EXTINGUISHED AND REESTABLISHED

SURVEY NUMBER 422 VIRGINIA MILITARY DISTRICT CITY OF COLUMBUS, COUNTY OF FRANKLIN, STATE OF OHIO

Date:	February 20, 2019
Scale:	1" = 50'
Job No:	2018-0477

SURVEY NOTE:

This survey was prepared using documents of record, prior plats of survey, and observed evidence located by an actual field survey.



GRAPHIC SCALE (in feet)

BASIS OF BEARINGS:

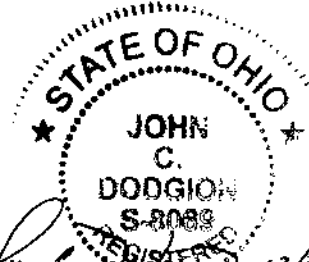
The bearings herein are based on the Ohio State Plane Coordinate System, South Zone, NAD 83 (NSRS 2007). Said coordinates originated from a field traverse that was tied (referenced) to said coordinate system by GPS observations of Franklin County Engineering Department monuments COC 01-83 and COC 18-83. A bearing of North 82° 40' 26" West was held for the centerline of Stimmel Road East.

- INTERSTATE 71
- FRA-62-7.29
- FRA-62-12.56
- FRA-3-13.70
- FRA-3-13.93

CITY OF COLUMBUS
ORIG. 78.296 AC. (DEED)
D.B. 1305, PG. 508

- = I.P. FND.
- = I.P. SET
- = MAG. NAIL FND.
- = MAG. NAIL SET
- ◆ = P.K. NAIL FND.

I.P. Set are 13/16" I.D. iron pipes 30" long with cap inscribed EMHT INC



By John C. Dodgion Date 02/28/2019
Professional Surveyor No. 8069

RECEIVED

Franklin County Highway
County Highway Department, P.O. Box 100