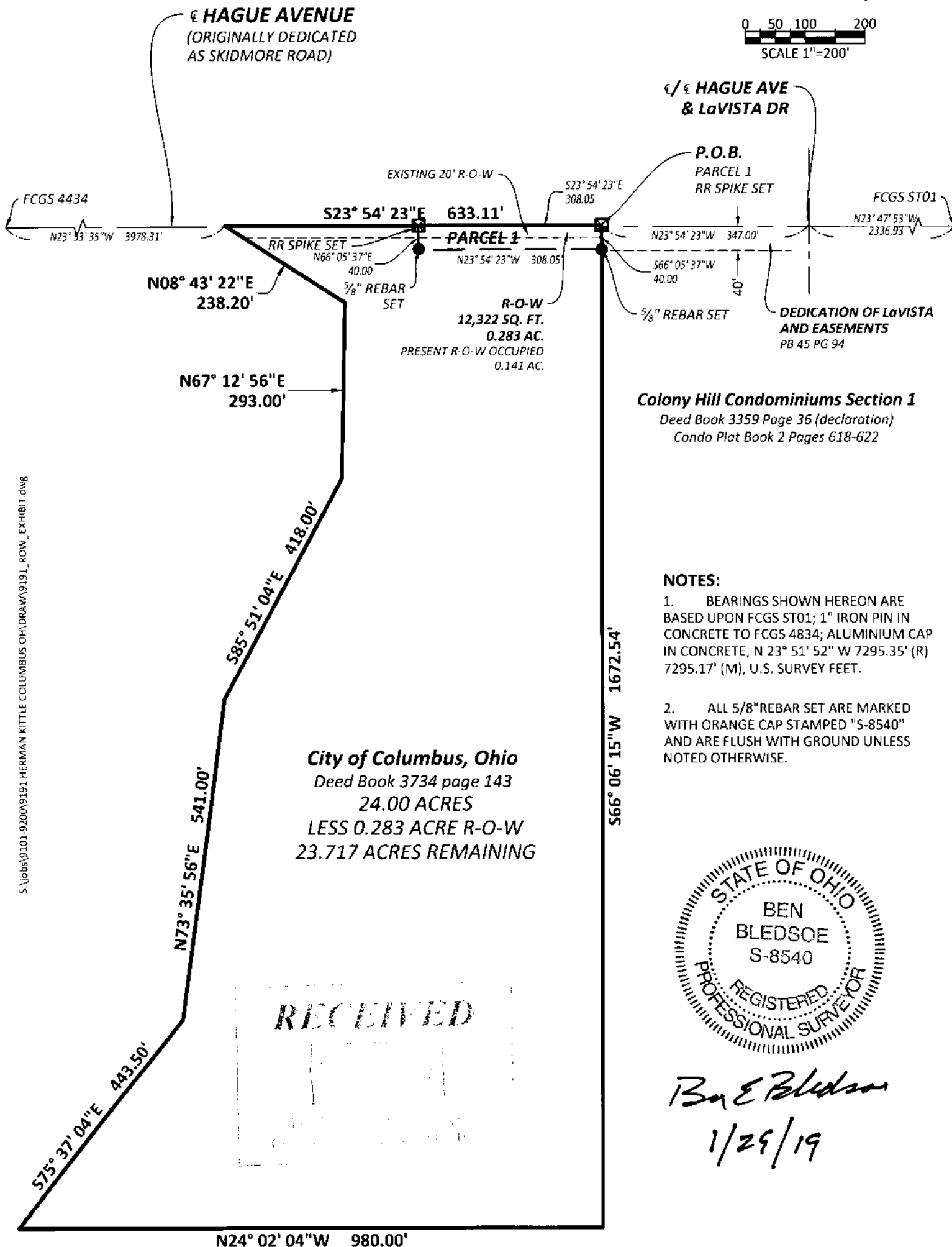
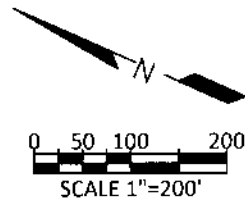




RIGHT OF WAY EXHIBIT
A PART OF VIRGINIA MILITARY SURVEY No. 530
CITY OF COLUMBUS, FRANKLIN COUNTY, OHIO
JOB No. 9191



NOTES:

- 1. BEARINGS SHOWN HEREON ARE BASED UPON FCGS ST01; 1" IRON PIN IN CONCRETE TO FCGS 4834; ALUMINIUM CAP IN CONCRETE, N 23° 51' 52" W 7295.35' (R) 7295.17' (M), U.S. SURVEY FEET.
- 2. ALL 5/8" REBAR SET ARE MARKED WITH ORANGE CAP STAMPED "S-8540" AND ARE FLUSH WITH GROUND UNLESS NOTED OTHERWISE.

City of Columbus, Ohio
Deed Book 3734 page 143
24.00 ACRES
LESS 0.283 ACRE R-O-W
23.717 ACRES REMAINING



Ben Bledsoe
1/29/19



S:\jobs\9101-9200\9191 HERMAN KITTLE COLUMBUS OH\DRAW\9191_ROW_EXHIBIT.dwg