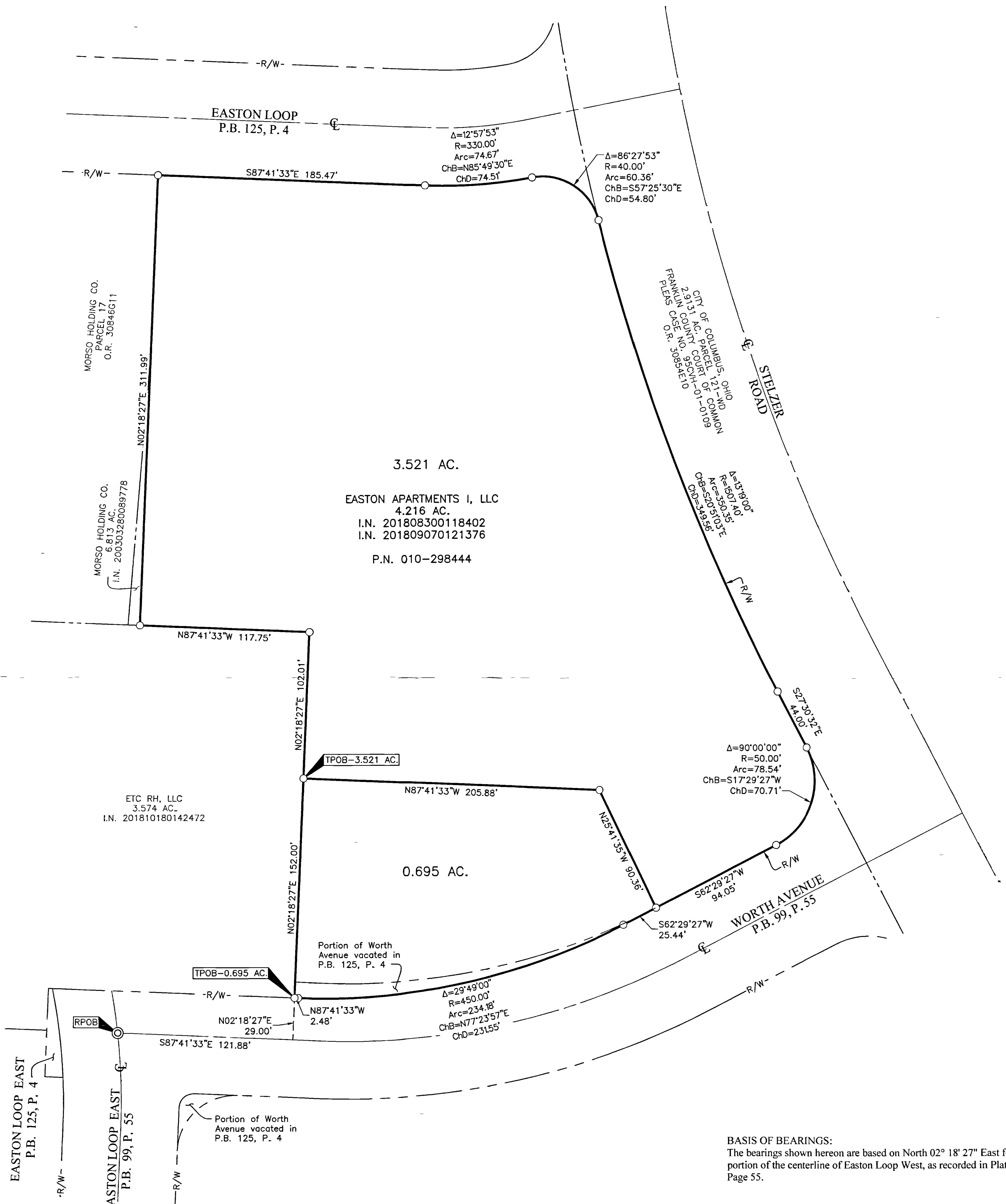


SURVEY OF ACREAGE PARCELS

QUARTER TOWNSHIP 2, TOWNSHIP 1, RANGE 17

UNITED STATES MILITARY LANDS

CITY OF COLUMBUS, COUNTY OF FRANKLIN, STATE OF OHIO



3.521 AC.
 EASTON APARTMENTS I, LLC
 4.216 AC.
 I.N. 201808300118402
 I.N. 201809070121376
 P.N. 010-298444

ETC RH, LLC
 3.574 AC.
 I.N. 201810180142472

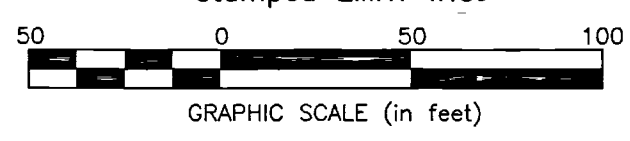
0.695 AC.

BASIS OF BEARINGS:
 The bearings shown hereon are based on North 02° 18' 27" East for a portion of the centerline of Easton Loop West, as recorded in Plat Book 99, Page 55.

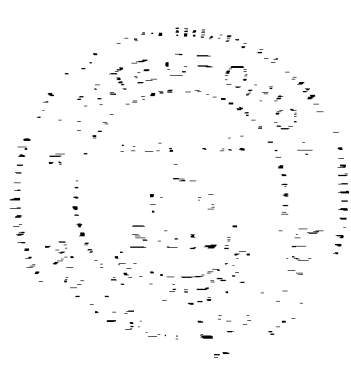
SURVEY NOTE:
 This survey was prepared using documents of record, prior plats of survey, and observed evidence located by an actual field survey.

- = STONE FND.
- = MON. FND.
- = I.P. FND.
- = I.P. SET
- = MAG. NAIL FND.
- = MAG. NAIL SET
- ▲ = R.R. SPK. FND.
- △ = R.R. SPK. SET
- ◆ = P.K. NAIL FND.
- ◎ = PERM. MRKR. SET

I.P. Set are 13/16" I.D. iron pipes 30" long with cap stamped EMHT INC. Permanent Markers set are one-inch solid iron pins with aluminum cap stamped EMHT INC.



RECEIVED
 Franklin County Engineer
 Cornell R. Robertson, P.E., P.S.



By *Heather L. King* 1/23/19
 Heather L. King
 Professional Surveyor No. 8307
 Date

EMHT		Date: January 23, 2019
Evans, Mechwart, Hambleton & Tilton, Inc. Engineers • Surveyors • Planners • Scientists 5500 New Albany Road, Columbus, OH 43054 Phone: 614.775.4500 Toll Free: 888.775.3648 emht.com		Scale: 1" = 50'
		Job No: 2018-1278
		Sheet: 1 of 1
REVISIONS		
MARK	DATE	DESCRIPTION

J:\20181278\DWG\CASHIETS\BOUNDARY\20181278-VS-BNDY-01.DWG plotted by KING, HEATHER on 1/23/2019 7:02:07 PM
 J:\20181278\DWG\CASHIETS\BOUNDARY\20181278-VS-BNDY-01.DWG last saved by KING on 1/23/2019 7:02:07 PM