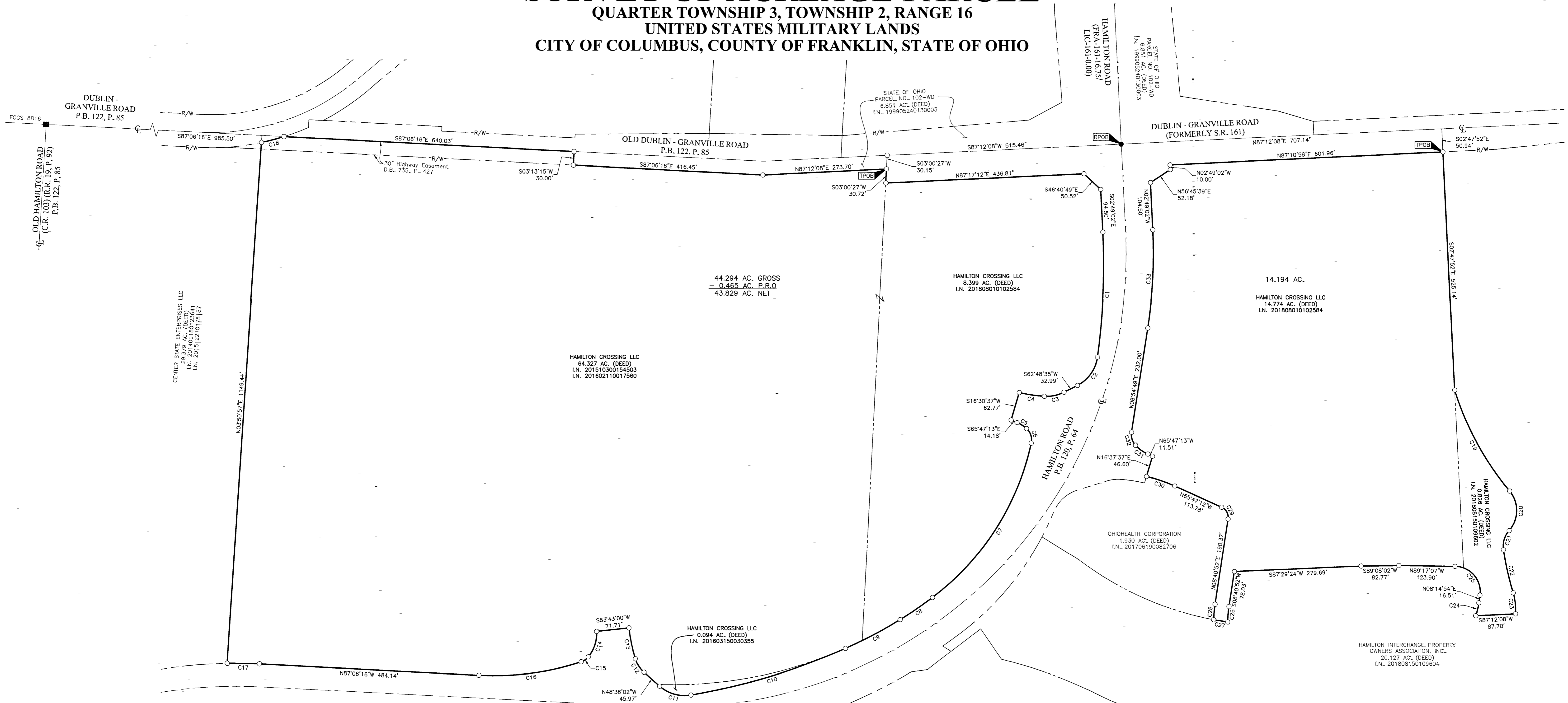


# SURVEY OF ACREAGE PARCEL

## QUARTER TOWNSHIP 3, TOWNSHIP 2, RANGE 16

### UNITED STATES MILITARY LANDS

#### CITY OF COLUMBUS, COUNTY OF FRANKLIN, STATE OF OHIO



CENTER STATE ENTERPRISES LLC  
29,379 AC. (DEED)  
I.N. 201510215175181

44.294 AC. GROSS  
= 0.465 AC. P.R.Q  
43.829 AC. NET

HAMILTON CROSSING LLC  
64.327 AC. (DEED)  
I.N. 201510300154503  
I.N. 201602110017560

HAMILTON CROSSING LLC  
8.399 AC. (DEED)  
I.N. 201608010102584

14.194 AC.  
HAMILTON CROSSING LLC  
14.774 AC. (DEED)  
I.N. 201808010102584

OHIOHEALTH CORPORATION  
1.930 AC. (DEED)  
I.N. 201705190082706

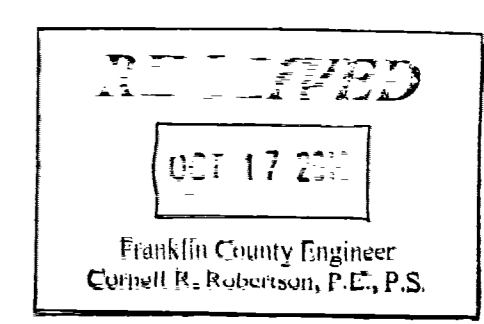
HAMILTON CROSSING LLC  
0.094 AC. (DEED)  
I.N. 201603150030355

HAMILTON INTERCHANGE PROPERTY OWNERS ASSOCIATION, INC.  
20.127 AC. (DEED)  
I.N. 201808150109604

**BASIS OF BEARINGS:**  
Bearings are based on the Ohio State Plane Coordinate System, South Zone, as per NAD83 (2007 Adjustment). Control for bearings was from coordinates of monuments FCGS 8815 & FCGS 8816, having a bearing of North 03° 23' 04" East for a portion of the centerline of Hamilton Road (Relocated), established by the Franklin County Engineering Department, using Global Positioning System procedures and equipment.

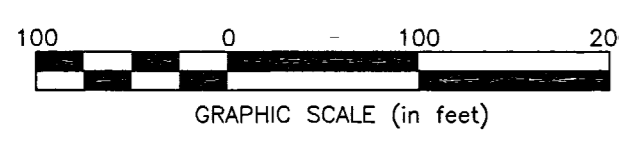
**SURVEY NOTE:**  
This survey was prepared using documents of record, prior plats of survey, and observed evidence located by an actual field survey.

**FEMA NOTE:**  
According to the Federal Emergency Management Agency's Flood Insurance Rate Map No. 39049C0203K (dated June 17, 2008), the subject tract shown hereon lies within Zone X (areas determined to be outside of the 0.2% annual chance floodplain).



CURVE TABLE					CURVE TABLE					CURVE TABLE							
CURVE	DELTA	RADIUS	ARC	CH. BEARING	CH. DIST.	CURVE	DELTA	RADIUS	ARC	CH. BEARING	CH. DIST.	CURVE	DELTA	RADIUS	ARC	CH. BEARING	CH. DIST.
C1	10°47'52"	1461.00'	275.34'	S02°34'55"W	274.93'	C12	31°53'48"	63.00'	35.07'	N32°39'08"W	34.62'	C23	20°45'46"	129.65'	46.98'	S06°15'20"E	46.72'
C2	54°49'45"	83.00'	79.43'	S35°23'43"W	76.43'	C13	10°25'14"	383.00'	69.66'	N11°29'37"W	69.56'	C24	10°58'51"	154.00'	29.51'	N13°44'19"E	29.47'
C3	30°41'52"	83.00'	44.47'	S78°09'32"W	43.94'	C14	41°49'21"	83.00'	60.59'	S18°05'30"W	59.25'	C25	97°32'01"	56.00'	95.33'	N40°31'07"W	84.23'
C4	9°37'57"	333.00'	55.98'	N81°40'33"W	55.92'	C15	33°13'46"	33.00'	19.14'	S55°37'04"W	18.87'	C26	7°18'33"	269.50'	34.38'	S05°01'35"W	34.36'
C5	17°07'31"	83.00'	24.81'	S57°13'27"E	24.72'	C16	20°39'47"	633.00'	228.29'	S82°33'50"W	227.05'	C27	2°33'34"	700.00'	31.27'	N80°44'07"W	31.27'
C6	61°01'14"	33.00'	35.15'	S18°09'04"E	33.51'	C17	3°51'36"	1050.00'	70.74'	N89°02'04"W	70.72'	C28	6°29'26"	300.50'	34.04'	N05°26'09"E	34.02'
C7	40°33'11"	583.00'	412.64'	S32°38'08"W	404.08'	C18	5°26'46"	533.50'	50.71'	N75°12'23"E	50.69'	C29	74°28'05"	24.50'	31.84'	N28°33'10"W	29.65'
C8	5°13'09"	949.92'	86.53'	S55°31'18"W	86.50'	C19	22°29'27"	648.30'	254.48'	S28°28'39"E	252.85'	C30	10°47'21"	349.17'	65.75'	N71°11'59"W	65.65'
C9	7°55'30"	950.81'	131.51'	S62°05'38"W	131.41'	C20	81°12'29"	66.99'	94.95'	S00°52'51"W	87.20'	C31	22°41'38"	84.00'	33.27'	N54°26'24"W	33.05'
C10	14°10'40"	1461.00'	361.52'	S73°08'43"W	360.60'	C21	50°18'59"	52.03'	45.69'	S16°19'36"W	44.24'	C32	52°00'23"	34.00'	30.86'	N17°05'23"W	29.81'
C11	51°09'55"	83.00'	74.12'	N74°11'00"W	71.68'	C22	7°48'20"	712.88'	97.12'	S12°44'03"E	97.04'	C33	11°43'50"	1059.92'	217.01'	N03°02'53"E	216.63'

- = STONE FND.
  - = MON. FND.
  - = I.P. FND.
  - = I.P. SET
  - = MAG. NAIL FND.
  - = MAG. NAIL SET
  - ▲ = R.R. SPK. FND.
  - △ = R.R. SPK. SET
  - = P.K. NAIL FND.
- I.P. Set are 13/16" I.D. iron pipes 30" long with cap inscribed EMHT INC.



**EMHT**  
Evans, Mechwart, Hambleton & Tilton, Inc.  
Engineers • Surveyors • Planners • Scientists  
5500 New Albany Road, Columbus, OH 43254  
Phone: 614.775.4552 Fax: 614.775.3648  
emht.com

Date: July 20, 2018  
Scale: 1" = 10'  
Job No: 2018-0433  
Sheet: 1 of 1

REVISIONS		
MARK	DATE	DESCRIPTION

By *Heather L. King* 7/24/18  
Heather L. King  
Professional Surveyor No. 8307 Date