



Evans, Mechwart, Hambleton & Tilton, Inc.
 Engineers • Surveyors • Planners • Scientists
 5500 New Albany Road, Columbus, OH 43054
 Phone: 614.775.4500 Toll Free: 888.775.3648
 emht.com

SURVEY OF ACREAGE PARCEL

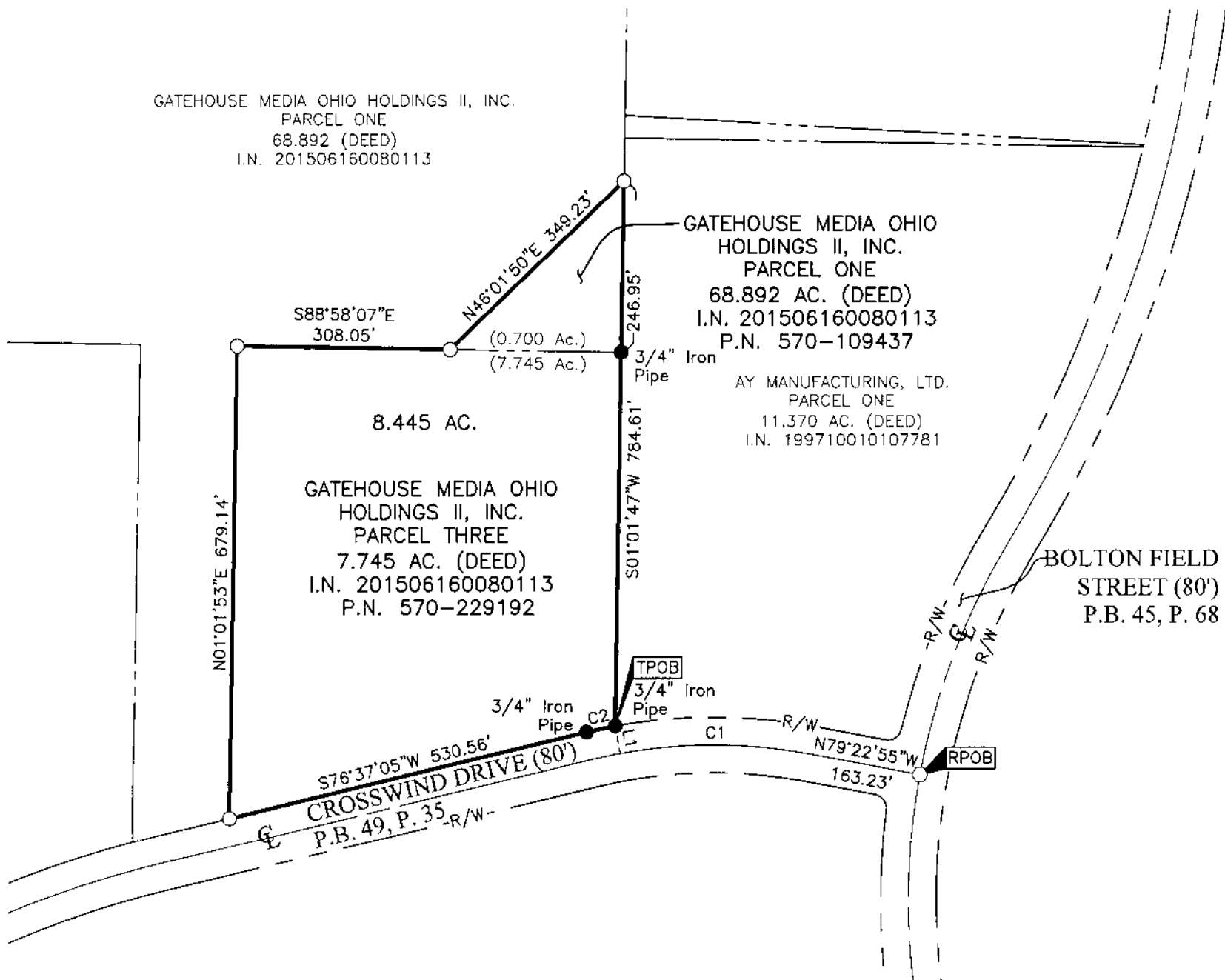
VIRGINIA MILITARY SURVEY No. 1462

CITY OF COLUMBUS, COUNTY OF FRANKLIN, STATE OF OHIO

Date: January 7, 2019

Job No: 2018-1516

Scale: 1" = 200'



CURVE TABLE					
CURVE	DELTA	RADIUS	ARC	CH. BEARING	CH. DIST.
C1	20°56'16"	750.00'	274.07'	N89°51'03"W	272.55'
C2	3°03'44"	790.00'	42.22'	S78°08'57"W	42.22'

LINE TABLE		
LINE	BEARING	DISTANCE
L1	N10°19'11"W	40.00'

BASIS OF BEARINGS:

The bearings shown hereon are based on the Ohio State Plane Coordinate System, South Zone, NAD83 (2011). Said bearings originated from a field traverse which was tied (referenced) to said coordinate system by positional solutions derived by the National Geodetic Survey's Online Positioning Users Service software using GPS observations of selected CORS base stations in the National Spatial Reference System. The portion of the centerline of Crosswind Drive, having a bearing of North 79° 22' 55" West, is as designated the "basis of bearings" for this survey.

SURVEY NOTE:

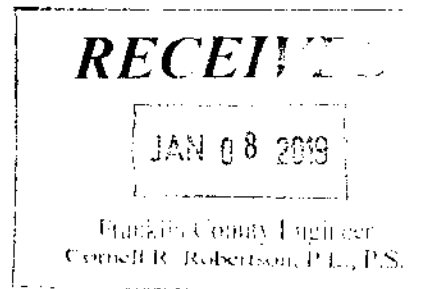
This survey was prepared using documents of record, prior plats of survey, and observed evidence located by an actual field survey.

- = STONE FND.
- = MON. FND.
- = I.P. FND.
- = I.P. SET
- = MAG. NAIL FND.
- = MAG. NAIL SET
- ▲ = R.R. SPK. FND.
- △ = R.R. SPK. SET
- ◆ = P.K. NAIL FND.

I.P. Set are 13/16" I.D. iron pipes 30" long with cap inscribed EMHT INC.



GRAPHIC SCALE (in feet)



By Matthew A. Kirk 7 JAN 19
 Matthew A. Kirk Date
 Professional Surveyor No. 7865

J:\20181516\DWG\04SHEETS\BOUNDARY\20181516-VS-BNDY-01.DWG plotted by MKRK, MATTHEW on 1/7/2019 3:03:32 PM last saved by MKRK on 1/7/2019 3:03:22 PM