



Evans, Mechwart, Hambleton & Tilton, Inc.
 Engineers • Surveyors • Planners • Scientists
 5500 New Albany Road, Columbus, OH 43054
 Phone: 614.775.4500 Toll Free: 888.775.3648

emht.com

SURVEY OF ACREAGE PARCEL

QUARTER TOWNSHIPS 2 AND 3, TOWNSHIP 2, RANGE 18

UNITED STATES MILITARY LANDS

CITY OF WORTHINGTON, COUNTY OF FRANKLIN, STATE OF OHIO

Date: February 6, 2019

Scale: 1" = 50'

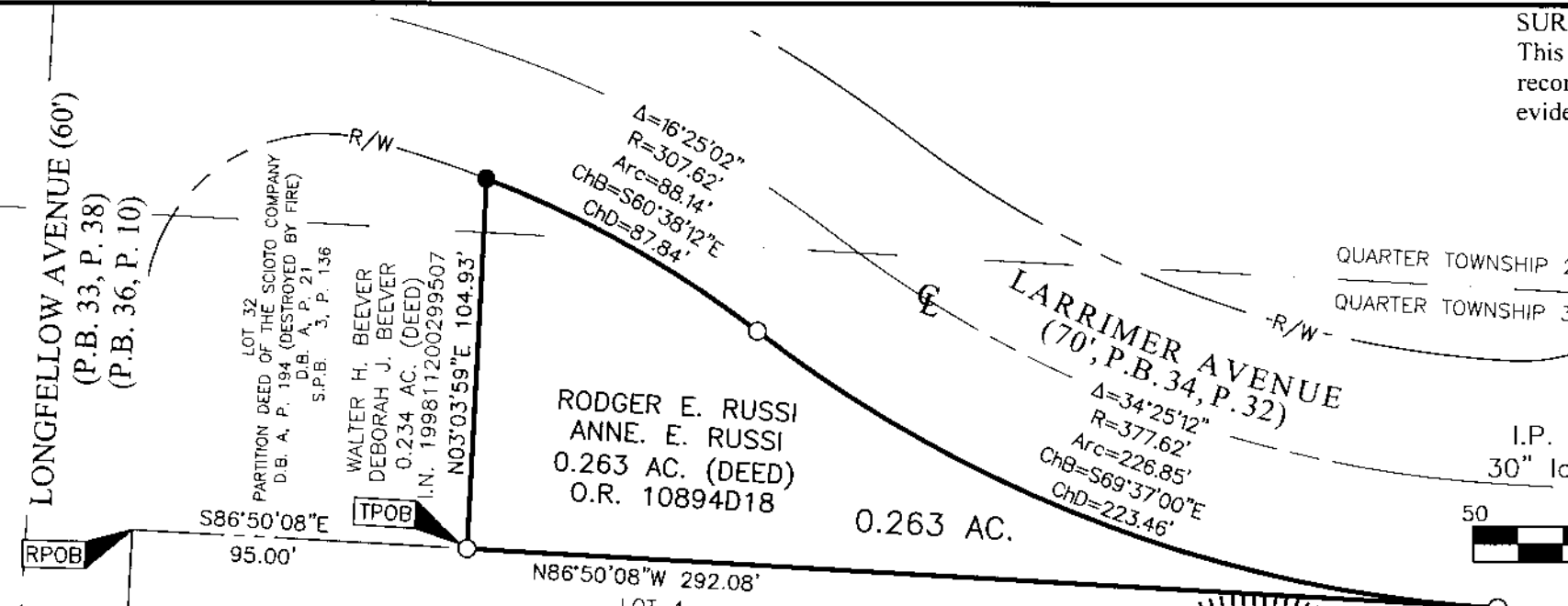
Job No: 2018-0036

SURVEY NOTE:

This survey was prepared using documents of record, prior plats of survey, and observed evidence located by an actual field survey.

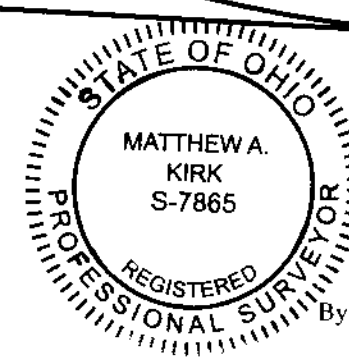
- = STONE FND.
- = MON. FND.
- = I.P. FND.
- = I.P. SET
- = MAG. NAIL FND.
- = MAG. NAIL SET
- ▲ = R.R. SPK. FND.
- △ = R.R. SPK. SET
- ◆ = P.K. NAIL FND.

I.P. Set are 13/16" I.D. iron pipes 30" long with cap inscribed EMHT INC.

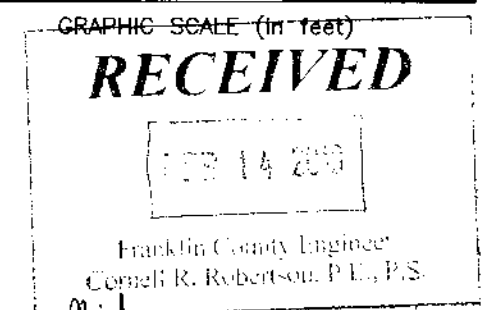


BASIS OF BEARINGS:

The bearings shown hereon are based on the Ohio State Plane Coordinate System, South Zone, as per NAD83 (1986 Adjustment). Control for bearings was from coordinates of monuments 6658 and CIRCLEAZIMUTH, established by the Franklin County Engineering Department, using Global Positioning System procedures and equipment. A bearing of South 03° 03' 59" West, as assigned to the westerly right-of-way line of North High Street (U.S. 23), is designated the basis of bearing for this survey.



By Matthew A. Kirk 6 FEB 19
 Matthew A. Kirk Date
 Professional Surveyor No. 7865



J:\20180036\DWG\04SHEETS\BOUNDARY\20180036-VS-BNDY-01.DWG plotted by KIRK, MATTHEW on 2/6/2019 2:25:39 PM last saved by NKIRK on 2/6/2019 2:25:27 PM
 Xrefs: 20180036-VS-ALTA-03.DWG & 20150397-VS-ALTA-01.DWG & 20180036-VG-TOPO-ALTA-02-03.DWG