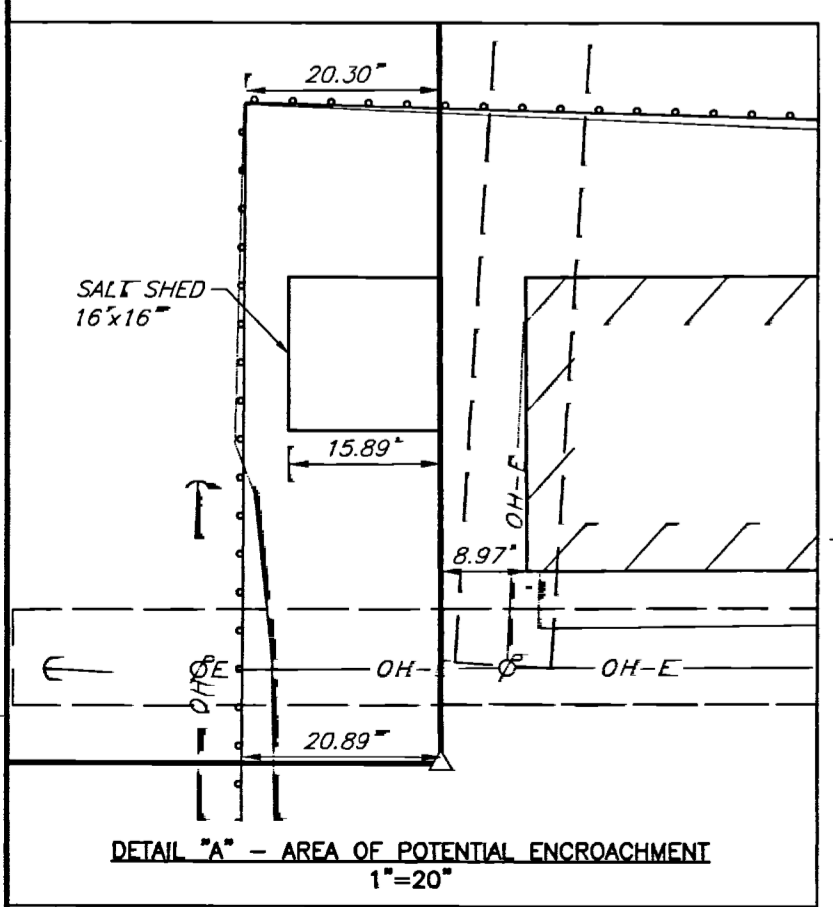
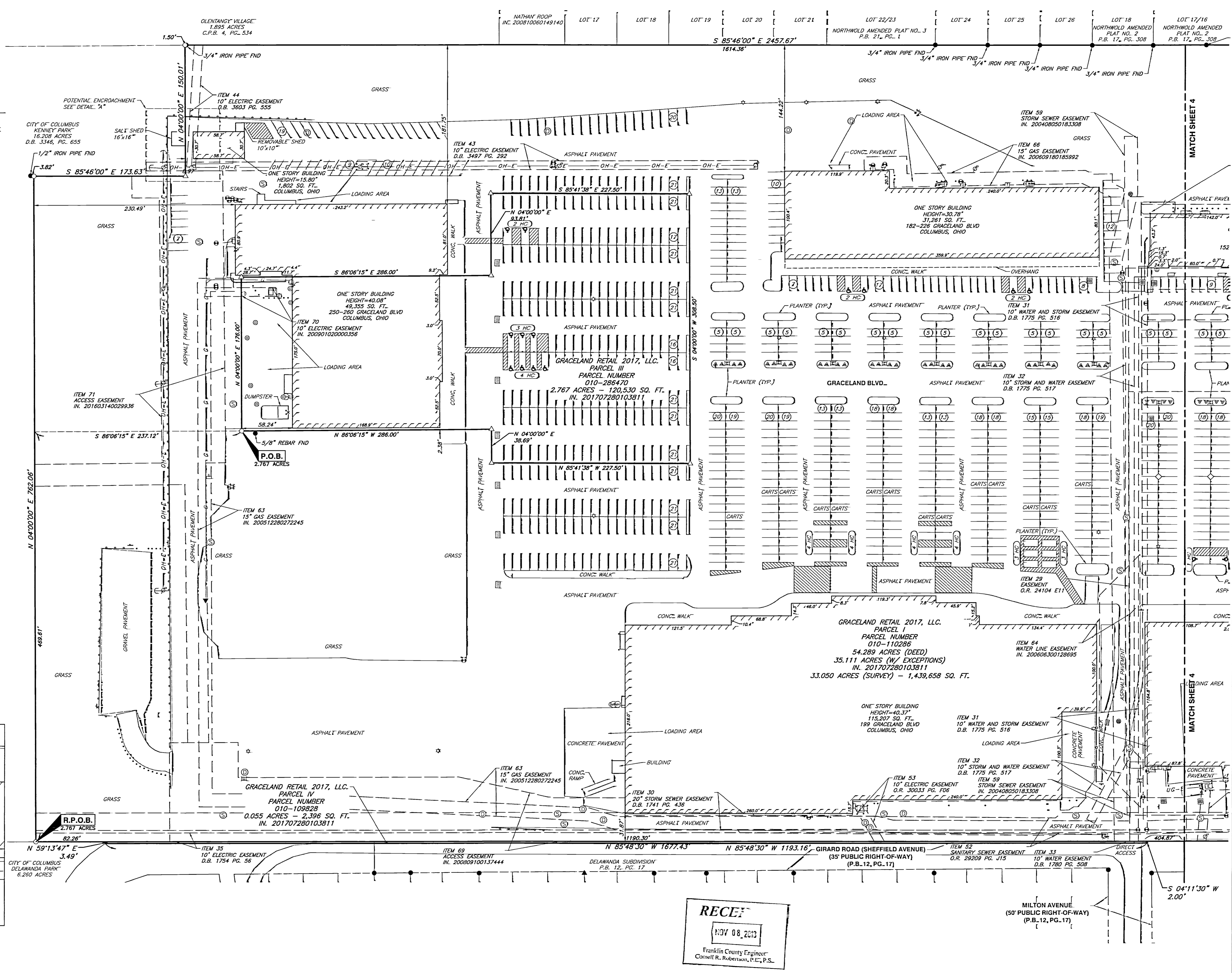


NORTH

SCALE IN FEET
0 50 100

EXISTING LEGEND:

- EXISTING PROPERTY LINE
- - - EXISTING ADJACENT PROPERTY LINE
- - - EXISTING RIGHT-OF-WAY
- - - EXISTING EASEMENT
- - - EXISTING FENCE
- - - EXISTING GUARDRAIL
- - - EXISTING SANITARY SEWER LINE
- - - EXISTING GAS LINE
- - - EXISTING WATER LINE
- - - EXISTING OVERHEAD ELECTRIC
- IRON PIN FOUND
- ▲ MAG / PK NAIL FOUND
- △ MAG NAIL SET
- REBAR IRON PIN SET & CAP
- FLAG POLE
- GROUND LIGHT
- SIGN
- LIGHT STANDARD
- BOLLARD
- HANDICAP PARKING SYMBOL
- STORM MANHOLE
- CATCH BASIN (TYPE)
- CURB INLET
- INLET (CIRCULAR)
- DRAIN
- INLET SQUARE
- SANITARY MANHOLE
- CLEAN OUT
- WATER BOX (WATER VALVE)
- FIRE HYDRANT
- FIRE DEPT. CONNECTION
- GAS MANHOLE
- GAS LINE MARKER
- GAS BOX (GAS VALVE)
- GAS METER
- POWER POLE
- GUY WIRE
- TELEPHONE PEDESTAL
- TELEPHONE LINE MARKER
- ELECTRIC MANHOLE
- ELECTRIC PULL BOX (FLUSH WITH GRADE)
- ELECTRIC METER
- ELECTRIC CONTROL BOX (ON BUILDING)
- TRANSFORMER
- ELECTRIC CONTROL CABINET (ABOVE GRADE)
- MANHOLE (UTILITY UNKNOWN)
- CABLE MANHOLE
- UTILITY PULL BOX (UNKNOWN, FLUSH WITH GRADE)



RECEIVED
NOV 08 2013
Franklin County Engineer
Cornell R. Robertson, P.E., P.S.

NO.	DATE	DESCRIPTION

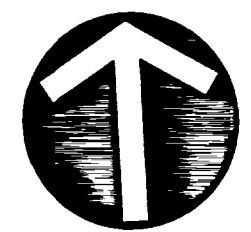
Civil & Environmental Consultants, Inc.
250 Old Wilson Bridge Road • Suite 250 • Worthington, OH 43085
614-540-6633 • 888-598-6808
www.ccecinc.com

**GRACELAND SHOPPING CENTER
CITY OF COLUMBUS
FRANKLIN COUNTY, OHIO**

PLAT OF SURVEY

DATE:	JEC
DWG. SCALE:	JAE
PROJECT NO.:	183-879
APPROVED BY:	MAS

AUGUST 2018 DRAWN BY:
1"=50' CHECKED BY:

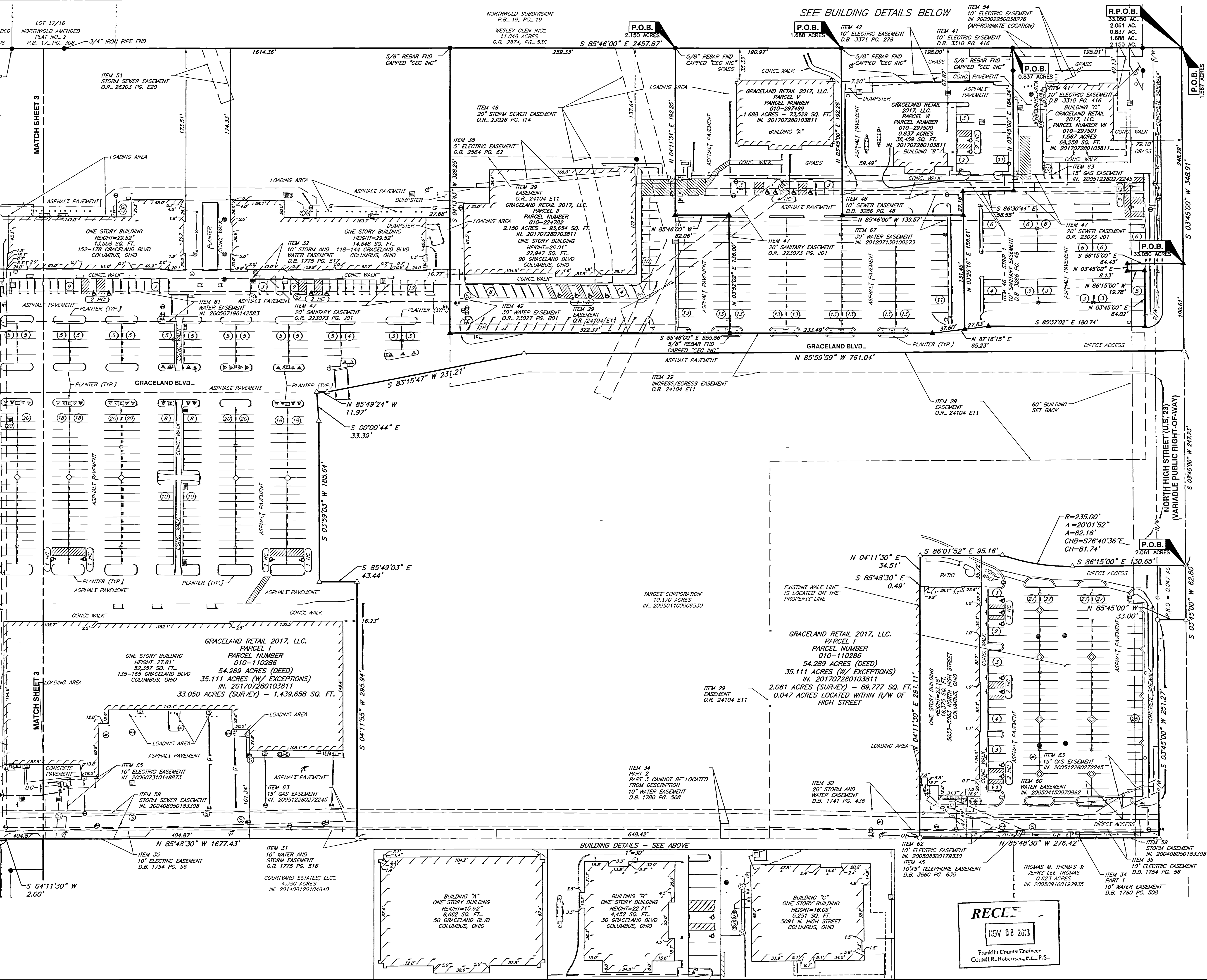


NORTH

SCALE IN FEET
0 50 100

EXISTING LEGEND:

- EXISTING PROPERTY LINE
- EXISTING ADJACENT PROPERTY LINE
- EXISTING RIGHT-OF-WAY
- EXISTING EASEMENT
- EXISTING FENCE
- EXISTING GUARDRAIL
- SAN --- EXISTING SANITARY SEWER LINE
- G --- EXISTING GAS LINE
- W --- EXISTING WATER LINE
- OH-E --- EXISTING OVERHEAD ELECTRIC
- IRON PIN FOUND
- ▲ MAG NAIL FOUND
- △ MAG NAIL SET
- ⊕ REBAR IRON PIN SET & CAP
- ⊙ FLAG POLE
- ⊙ GROUND LIGHT
- ⊙ SIGN
- ⊙ LIGHT STANDARD
- ⊙ BOLLARD
- ⊙ HANDICAP PARKING SYMBOL
- ⊙ STORM MANHOLE
- ⊙ CATCH BASIN (TYPE)
- ⊙ CURB INLET
- ⊙ INLET (CIRCULAR)
- ⊙ DRAIN
- ⊙ INLET SQUARE
- ⊙ SANITARY MANHOLE
- ⊙ CLEAN OUT
- ⊙ WATER BOX (WATER VALVE)
- ⊙ FIRE HYDRANT
- ⊙ FIRE DEPT. CONNECTION
- ⊙ GAS MANHOLE
- ⊙ GAS LINE MARKER
- ⊙ GAS BOX (GAS VALVE)
- ⊙ GAS METER
- ⊙ POWER POLE
- ⊙ GUY WIRE
- ⊙ TELEPHONE PEDESTAL
- ⊙ TELEPHONE LINE MARKER
- ⊙ ELECTRIC MANHOLE
- ⊙ ELECTRIC PULL BOX (FLUSH WITH GRADE)
- ⊙ ELECTRIC METER
- ⊙ ELECTRIC CONTROL BOX (ON BUILDING)
- ⊙ TRANSFORMER
- ⊙ ELECTRIC CONTROL CABINET (ABOVE GRADE)
- ⊙ MANHOLE (UTILITY UNKNOWN)
- ⊙ CABLE MANHOLE
- ⊙ UTILITY PULL BOX (UNKNOWN, FLUSH WITH GRADE)



NO.	DATE	REVISION RECORD	DESCRIPTION

Civil & Environmental Consultants, Inc.
 250 Old Wilson Bridge Road - Suite 250 - Worthington, OH 43085
 614-540-6633 • 888-598-6808
 www.cecinc.com

**GRACELAND SHOPPING CENTER
 CITY OF COLUMBUS
 FRANKLIN COUNTY, OHIO**

PLAT OF SURVEY	
DATE:	AUGUST 2018
DRAWN BY:	JAE
CHECKED BY:	JAE
PROJECT NO.:	155-879
APPROVED BY:	MAS