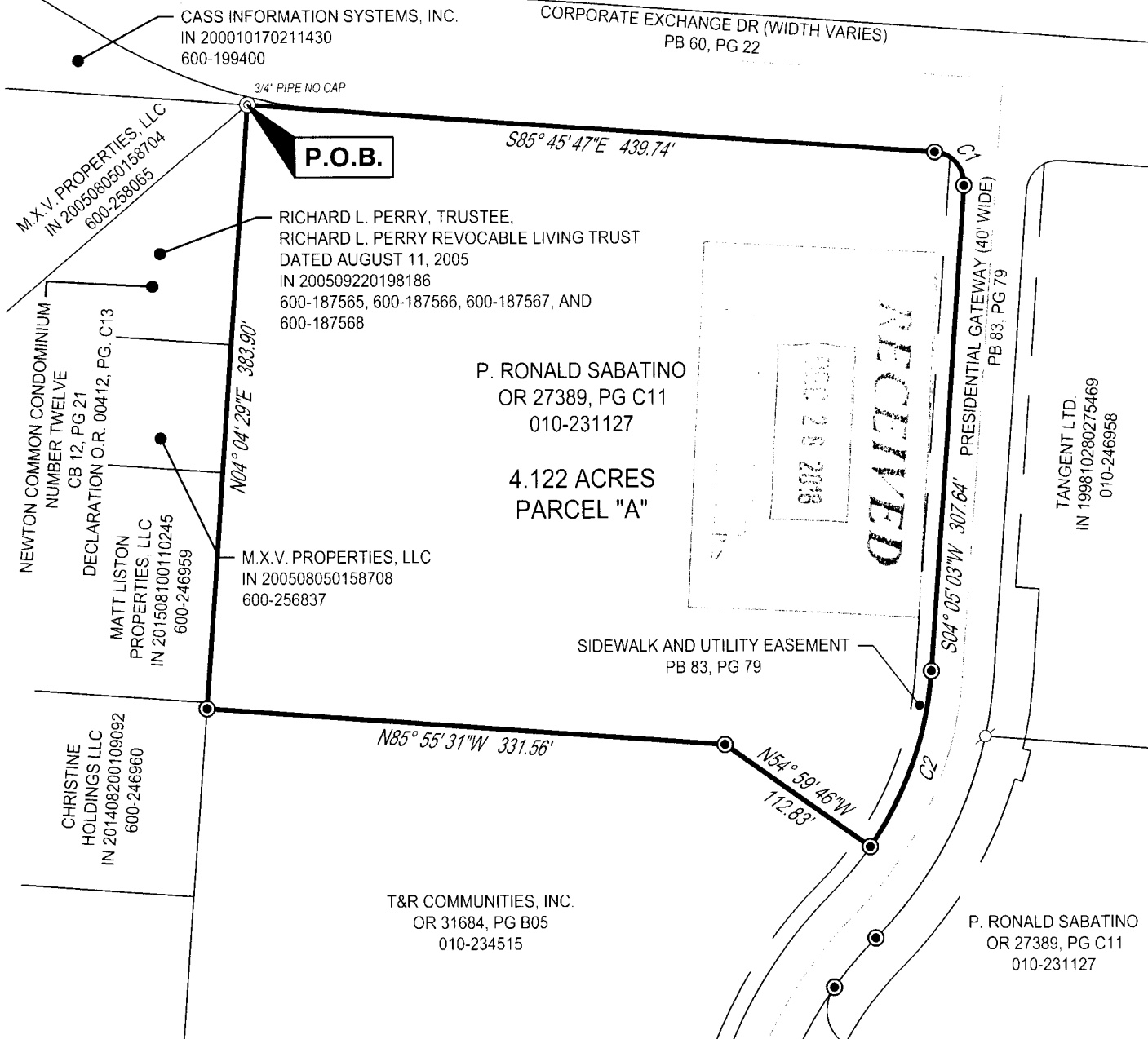


SURVEY OF ACREAGE PARCEL

4.122 ACRES, PARCEL "A"

SITUATED IN THE STATE OF OHIO, COUNTY OF FRANKLIN, CITY OF COLUMBUS,
SECTION 2, TOWNSHIP 2 N, RANGE 17 W, OF THE UNITED STATES MILITARY LANDS

Curve table					
Curve	Radius	Arc Length	Chord	Delta Angle	Tangent
C1	20.00'	31.36'	S40° 50' 22"E, 28.25'	89° 50' 50"	19.95'
C2	219.85'	118.69'	S19° 33' 03"W, 117.26'	30° 56' 00"	60.83'



I HEREBY CERTIFY THAT THIS DRAWING REPRESENTS A TRUE COMPLETE SURVEY MADE BY ME OR UNDER MY SUPERVISION ON DECEMBER 21, 2018, AND MEETS THE LATEST PROVISION OF OHIO ADMINISTRATIVE CODE CHAPTER 4733-37 - MINIMUM STANDARDS FOR BOUNDARY SURVEYS IN THE STATE OF OHIO. ALL DIMENSIONS ARE IN FEET AND DECIMAL PARTS THEREOF.

THE FIELD WORK WAS COMPLETED ON DECEMBER 20, 2018

Russell Koenig 12-26-2018

RUSSELL KOENIG, S-8358
koenig@cesoinc.com

DATE

LEGEND

- 5/8"X30" REBAR W/ YELLOW CAP STAMPED "CESO" SET
- ⊙ IRON PIN FOUND
- MAG NAIL FOUND

BASIS OF BEARING:

BEARINGS ARE BASED ON THE OHIO STATE PLANE COORDINATE SYSTEM, SOUTH ZONE, NAD 83 (2007), WITH TIES TO FRANKLIN COUNTY ENGINEER MONUMENTS FRANK 76 AND FCGS 9959 HAVING A RELATIVE BEARING OF NORTH 59 DEGREES 46 MINUTES 49 SECONDS EAST.

LOT SPLIT	
P. RONALD SABATINO	
S2, T2, R17 FRANKLIN, OHIO	
COLUMBUS	
SCALE: 1" = 100'	DATE: DECEMBER 2018
DESIGN: N/A	JOB NO.: 756130
DRAWN: JK	SHEET NO.:
CHECKED: RK	1 OF 1

