



Evans, Mechwart, Hambleton & Tilton, Inc.  
 Engineers • Surveyors • Planners • Scientists  
 5500 New Albany Road, Columbus, OH 43054  
 Phone: 614.775.4500 Toll Free: 888.775.3648  
 emht.com

# SURVEY OF ACREAGE PARCEL

QUARTER TOWNSHIP 3, TOWNSHIP 2, RANGE 16

UNITED STATES MILITARY LANDS

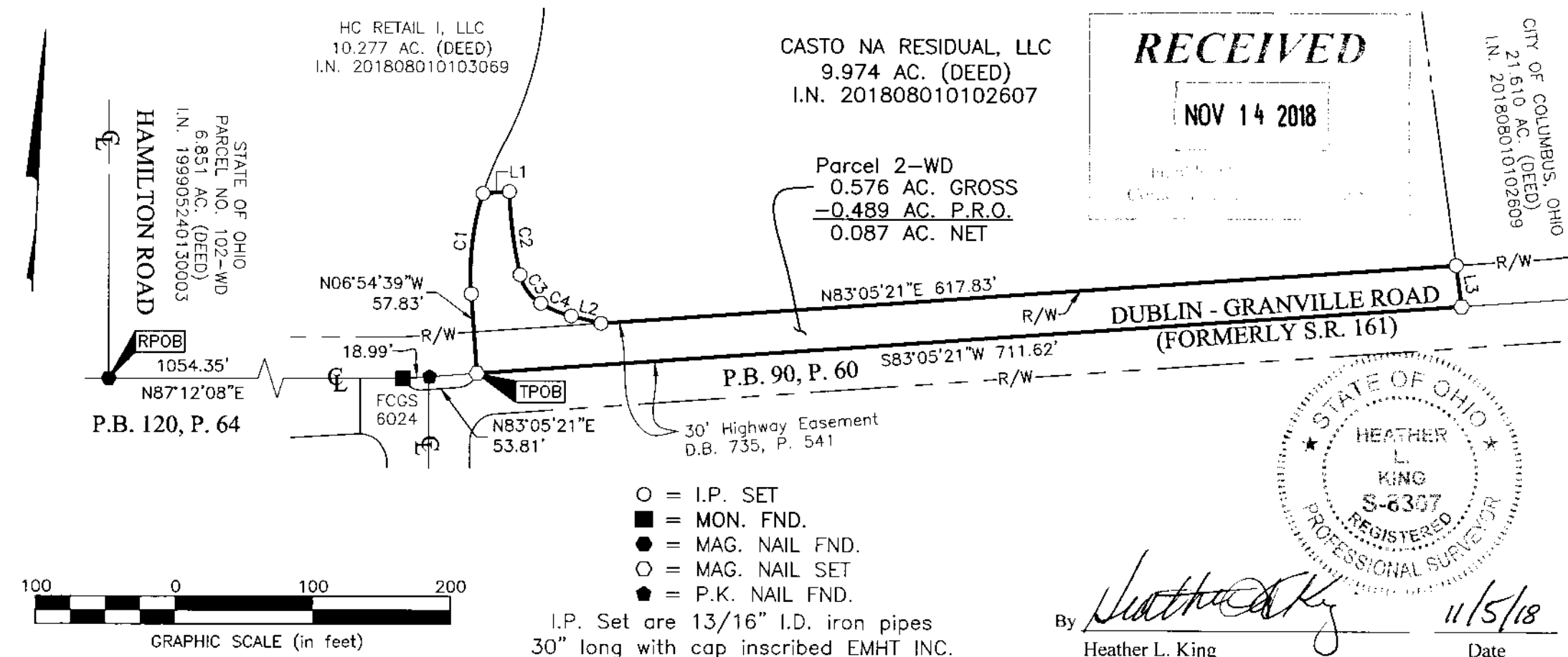
CITY OF COLUMBUS, COUNTY OF FRANKLIN, STATE OF OHIO

Date: October 1, 2018

Scale: 1" = 100'

Job No: 2017-1141

SHEET 1 OF 2





Evans, Mechwart, Hambleton & Tilton, Inc.  
 Engineers • Surveyors • Planners • Scientists  
 5500 New Albany Road, Columbus, OH 43054  
 Phone: 614.775.4500 Toll Free: 888.775.3648  
 emht.com

**SURVEY OF ACREAGE PARCEL**  
 QUARTER TOWNSHIP 3, TOWNSHIP 2, RANGE 16  
 UNITED STATES MILITARY LANDS  
 CITY OF COLUMBUS, COUNTY OF FRANKLIN, STATE OF OHIO

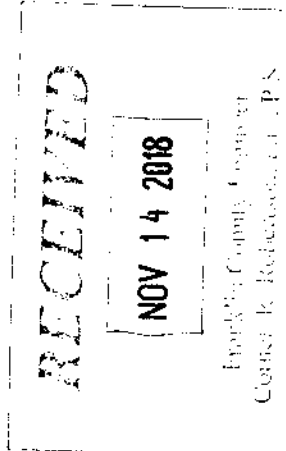
Date: October 1, 2018

Job No: 2017-1141

Scale: 1" =

SHEET 2 OF 2

LINE TABLE		
LINE	BEARING	DISTANCE
L1	N83°05'21"E	19.02'
L2	S78°59'04"E	22.05'
L3	S10°43'49"E	30.07'



CURVE TABLE					
CURVE	DELTA	RADIUS	ARC	CH. BEARING	CH. DIST.
C1	21°15'46"	199.00'	73.85'	N03°43'14"E	73.43'
C2	11°20'55"	308.00'	61.01'	S10°14'13"E	60.91'
C3	45°30'38"	33.00'	26.21'	S38°40'00"E	25.53'
C4	17°33'45"	78.00'	23.91'	S70°12'11"E	23.82'

**BASIS OF BEARINGS:**

Bearings are based on the Ohio State Plane Coordinate System, South Zone, as per NAD83 (2007 Adjustment). Control for bearings was from coordinates of monuments FCGS 8815 & FCGS 8816, having a bearing of North 03° 23' 04" East for a portion of the centerline of Hamilton Road (Relocated), established by the Franklin County Engineering Department, using Global Positioning System procedures and equipment.

**SURVEY NOTE:**

This survey was prepared using documents of record, prior plats of survey, and observed evidence located by an actual field survey.

J:\2017\1141\DWG\04\SHEETS\BOUNDARY\20171141-V5-BNDY-2WO-DWG plotted by DIROMA, THERESA on 10/17/2018 12:57:27 PM last saved by DIROMA on 10/17/2018 12:57:10 PM Xrefs: