



Evans, Mechwart, Hambleton & Tillon, Inc.
 Engineers • Surveyors • Planners • Scientists
 5500 New Albany Road, Columbus, OH 43054
 Phone: 614.775.4500 Toll Free: 888.775.3648
 emht.com

SURVEY OF ACREAGE PARCEL

LOTS 2 AND 3, QUARTER TOWNSHIP 4, TOWNSHIP 2, RANGE 16
 UNITED STATES MILITARY DISTRICT
 CITY OF NEW ALBANY, COUNTY OF FRANKLIN, STATE OF OHIO

Date: November 14, 2018

Job No: 2018-0045

Scale: 1" = 100'

SURVEY NOTE:

This survey was prepared using documents of record, prior plats of survey, and observed evidence located by an actual field survey in 1999, 2001, 2002, 2015, 2017, and 2018.

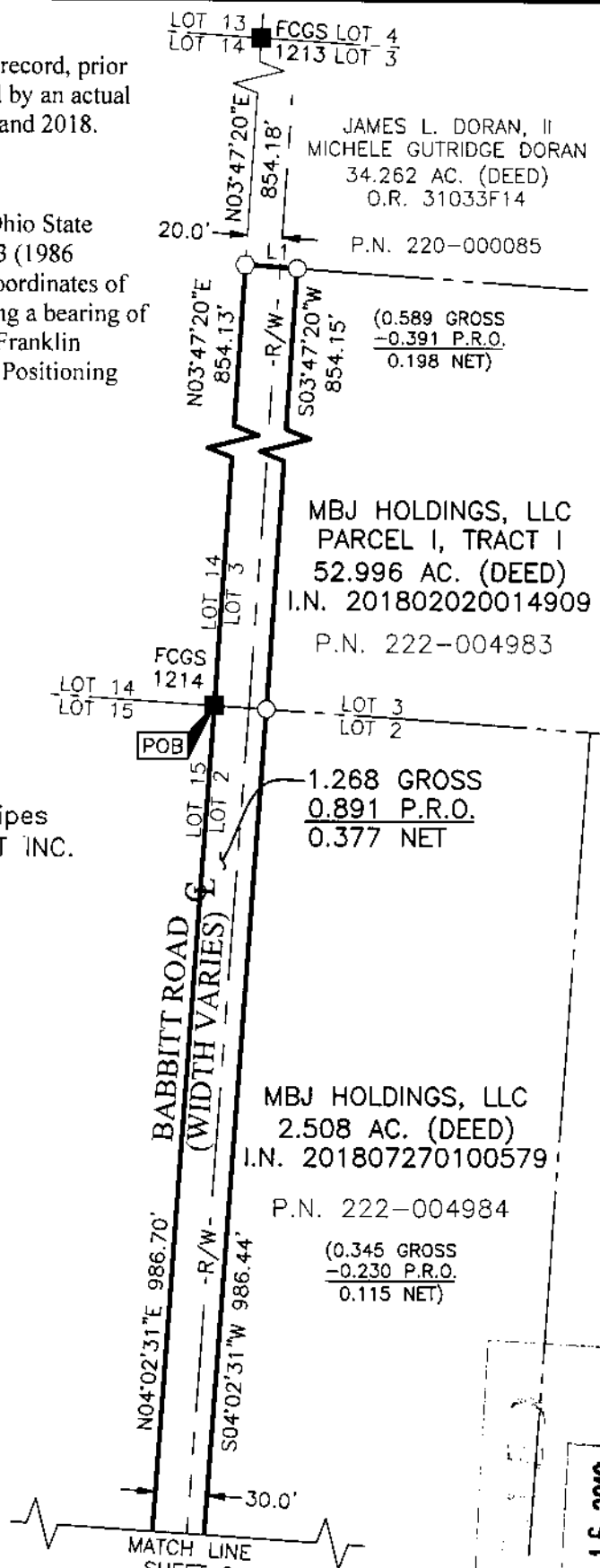
BASIS OF BEARINGS:

The bearings shown hereon are based on the Ohio State Plane Coordinate System, South Zone, NAD83 (1986 Adjustment). Control for bearings was from coordinates of monuments FRANK80 and FRANK180, having a bearing of North 85° 57' 24" West, as established by the Franklin County Engineering Department using Global Positioning System procedures and equipment.

- = STONE FND.
- = MON. FND.
- = I.P. FND.
- = I.P. SET
- = MAG. NAIL FND.
- = MAG. NAIL SET
- ▲ = R.R. SPK. FND.
- △ = R.R. SPK. SET
- ◆ = P.K. NAIL FND.

I.P. Set are 13/16" I.D. iron pipes 30" long with cap inscribed EMHT INC.

LINE TABLE		
LINE	BEARING	DISTANCE
L1	S86°07'46"E	30.00'
L2	N86°34'40"W	30.00'



J:\20180045\DWG\BOUNDARY\20180045-V5-BNDY-04.DWG plotted by JSCHROEDER on 11/14/2018 9:21:56 AM

By Joshua M. Meyer
 Professional Surveyor No. 8485

Date 11-14-2018



GRAPHIC SCALE (in feet)

RECEIVED

NOV 16 2018

Franklin County Engineer
 Carter W. Robertson, P.L., P.S.



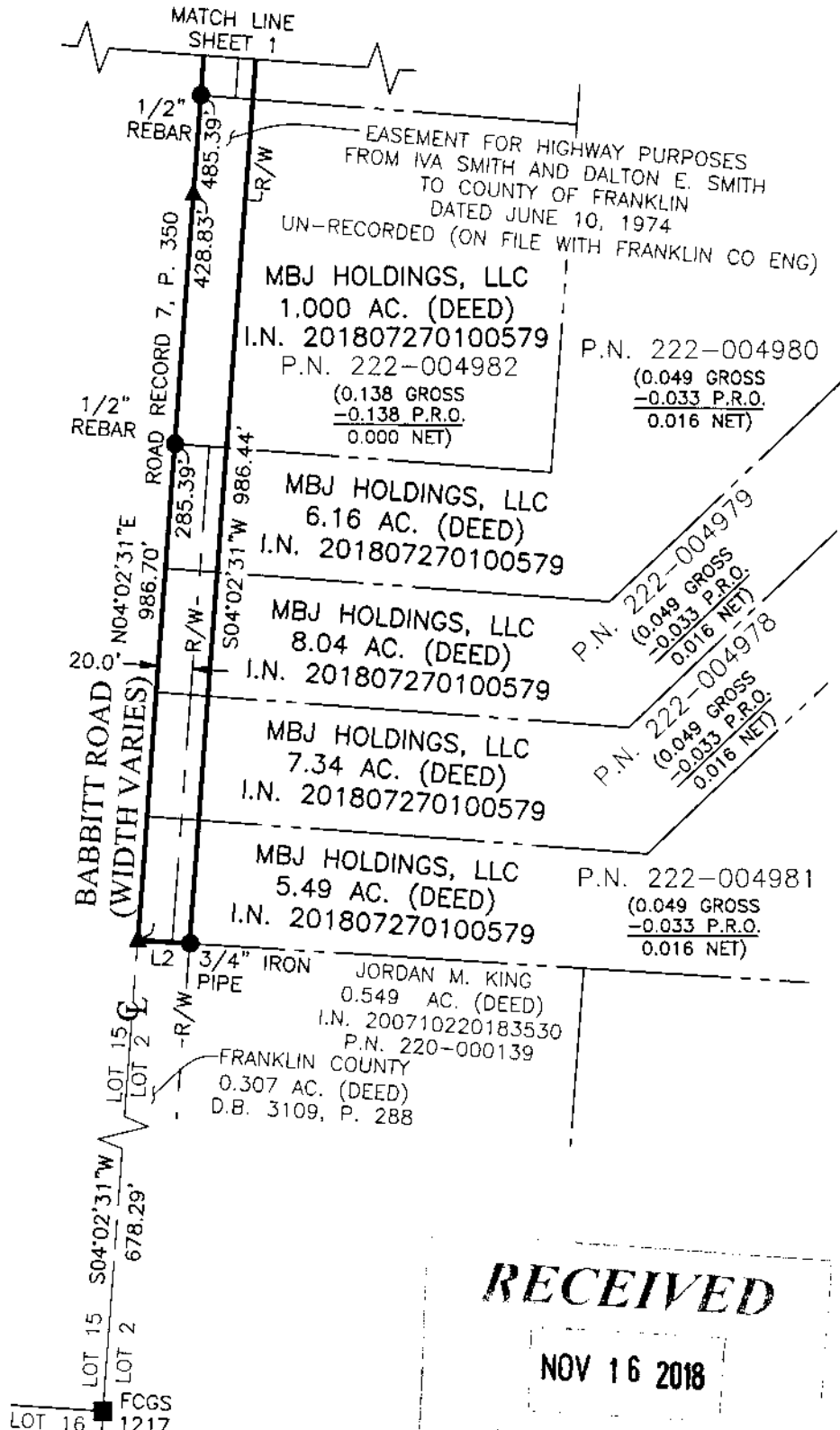
Evans, Mechwart, Hombleton & Tilton, Inc.
 Engineers • Surveyors • Planners • Scientists
 5500 New Albany Road, Columbus, OH 43054
 Phone: 614.775.4500 Toll Free: 888.775.3648
 emht.com

SURVEY OF ACREAGE PARCEL
LOTS 2 AND 3, QUARTER TOWNSHIP 4, TOWNSHIP 2, RANGE 16
UNITED STATES MILITARY DISTRICT
CITY OF NEW ALBANY, COUNTY OF FRANKLIN, STATE OF OHIO

Date: November 14, 2018

Job No: 2018-0045

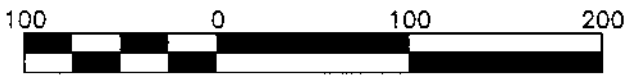
Scale: 1" = 100'



RECEIVED

NOV 16 2018

Franklin County Engineer
 Const. R. Robertson, P.E., P.S.



GRAPHIC SCALE (in feet)

U:\20180045\DWG\04SHEETS\BOUNDARY\20180045-VS-BNDY-D4.DWG plotted by SCHROEDER, JACOB on 11/14/2018 9:22:40 AM last saved by JSCHROEDER on 11/14/2018 9:21:56 AM
 Xrefs: