

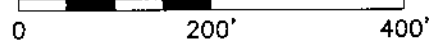
PLAT OF SURVEY

STATE OF OHIO, COUNTY OF FRANKLIN, CITY OF COLUMBUS,
VIRGINIA MILITARY SURVEY NO. 3012



NORTH

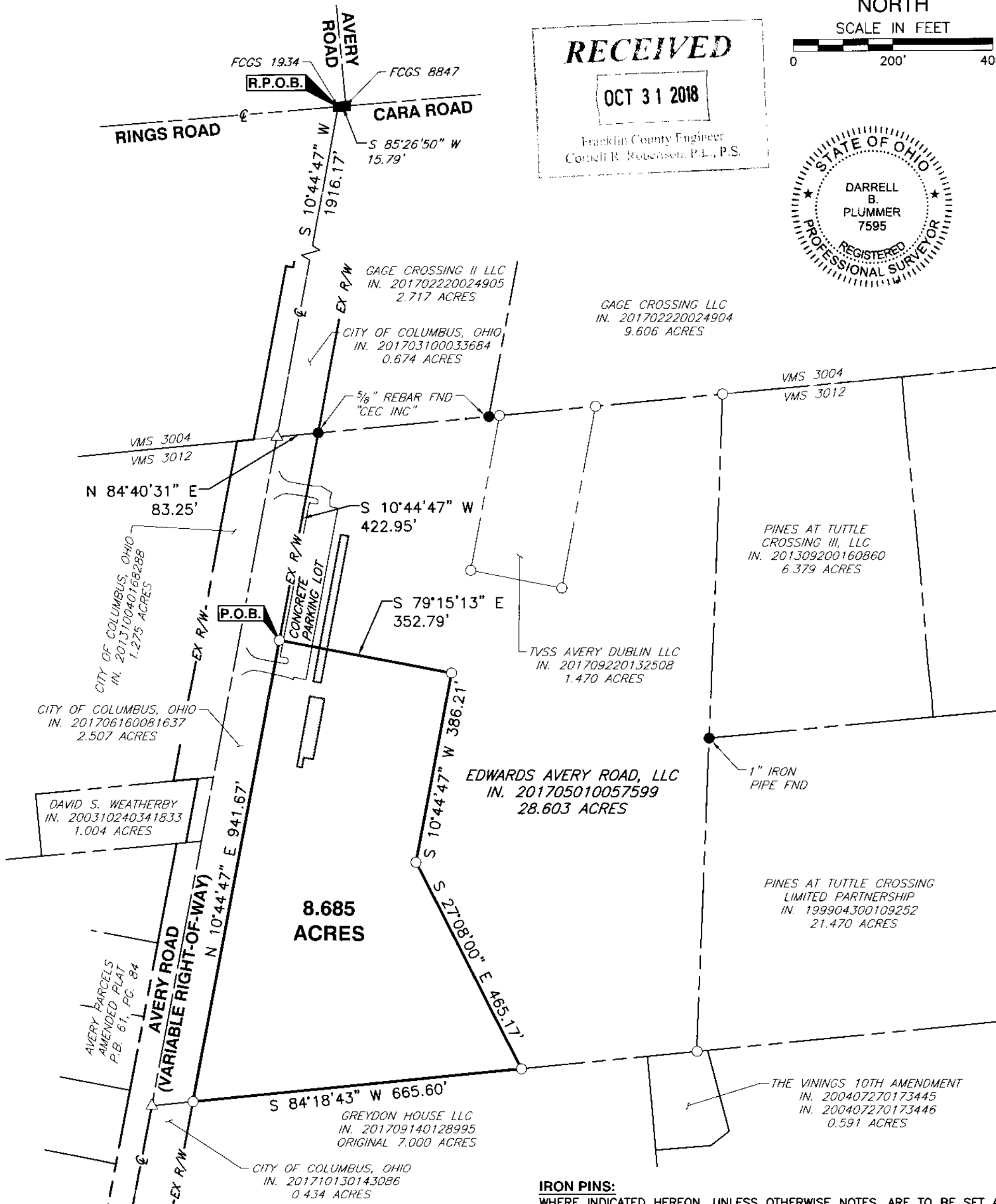
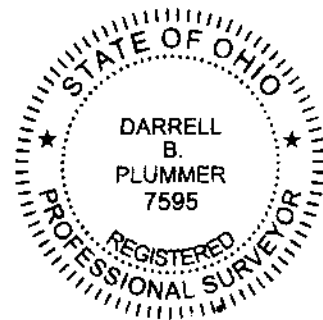
SCALE IN FEET



RECEIVED

OCT 31 2018

Franklin County Engineer
Cornell R. Roberson, P.L., P.S.



WE HEREBY CERTIFY THAT THE FOREGOING BOUNDARY SURVEY WAS PREPARED WITH ACTUAL FIELD MEASUREMENTS IN ACCORDANCE WITH CHAPTER 4733-37 OHIO ADMINISTRATIVE CODE.

IRON PINS:
WHERE INDICATED HEREON, UNLESS OTHERWISE NOTES, ARE TO BE SET AND ARE 5/8" SOLID REBAR, THIRTY INCHES LONG WITH YELLOW PLASTIC CAP BEARING THE INITIALS "CEC INC."

BASIS OF BEARINGS:
THE BEARINGS SHOWN ON THIS SURVEY ARE BASED ON THE BEARING BETWEEN FCGS 1934 AND FCGS 8855 OF NORTH 10°44'47" EAST FOR THE CENTERLINE OF AVERY ROAD AS DETERMINED BY GPS OBSERVATIONS USING ODOT VRS, BASED ON NAD 83 (2011), OHIO STATE PLANE SOUTH ZONE.

Darrell B. Plummer 10/26/2018
DARRELL B. PLUMMER, PROFESSIONAL SURVEY NO.: S-7595 DATE

<p>LEGEND</p> <ul style="list-style-type: none"> ● IRON PIN FOUND ○ IRON PIN SET △ MAG NAIL SET ■ FOUND COUNTY MONUMENT 	<p>Civil & Environmental Consultants, Inc. 250 Old Wilson Bridge Road · Suite 250 · Worthington, OH 43085 614-540-6633 · 888-598-6808 www.cecinc.com</p>	<p>CITY OF COLUMBUS FRANKLIN COUNTY, OHIO</p>	
		<p>8.685 ACRES</p>	
<p>DRAWN BY: DBP</p>	<p>CHECKED BY: MAS</p>	<p>APPROVED BY: MAS</p>	<p>DRAWING NO.: SRV</p>
<p>DATE: OCTOBER 2018</p>	<p>DWG SCALE: 1"=200'</p>	<p>PROJECT NO.: 181-147</p>	