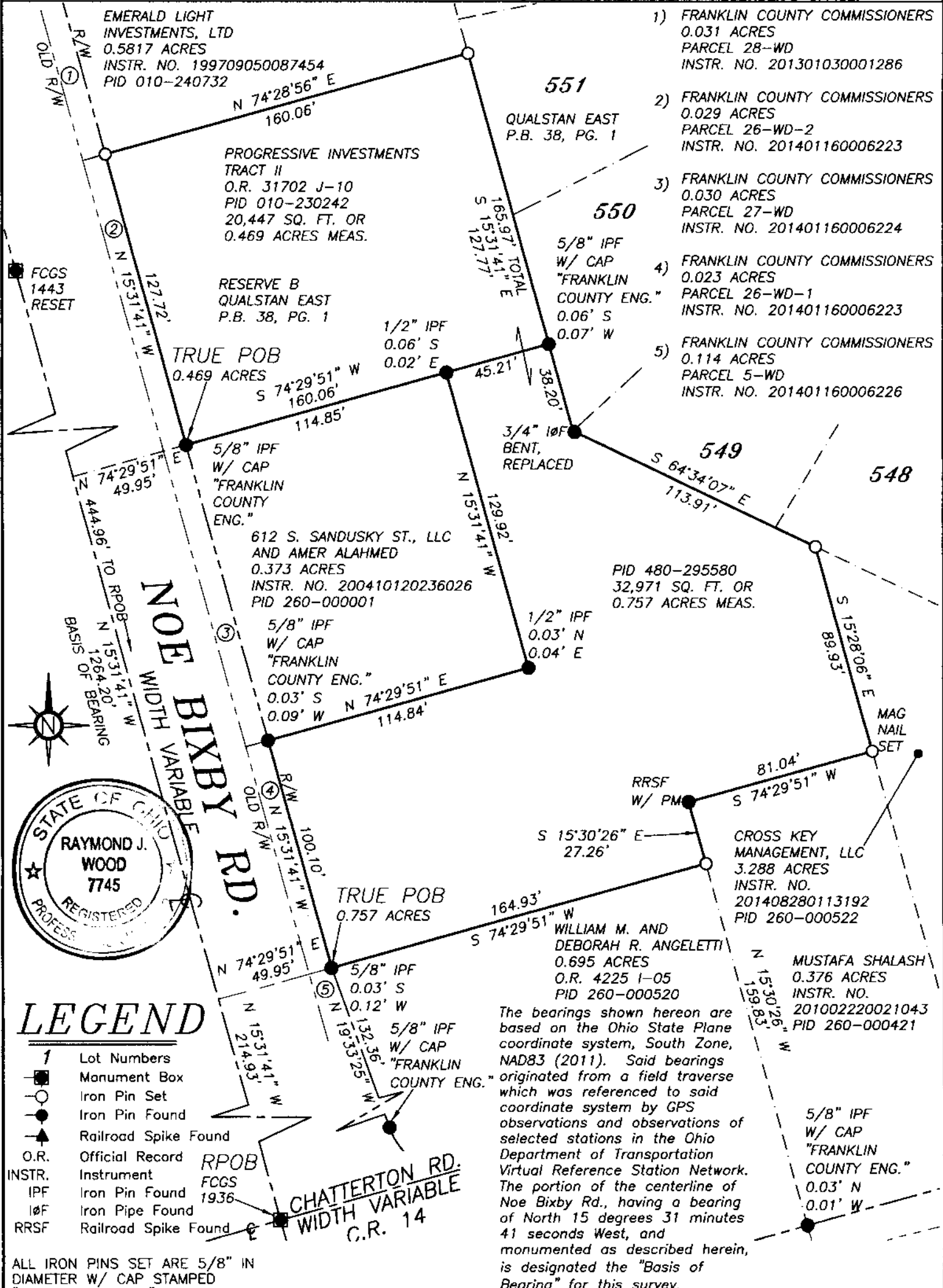


K-5-C

BOUNDARY SURVEY OF RESERVE B QUALSTAN EAST P.B. 38, PG. 1

1.226 ACRES

SITUATED IN THE STATE OF OHIO, COUNTY OF FRANKLIN, CITY OF COLUMBUS, HALF SECTION 47, TOWNSHIP 12, RANGE 21, SCOFIELD'S SURVEY OF THE REFUGEE LANDS, AND BEING A PART OF RESERVE B OF QUALSTAN EAST, PLAT BOOK 38, PG. 1, AND BEING PART OF TRACT II CONVEYED TO PROGRESSIVE INVESTMENTS IN O.R. 31702 J-10, FRANKLIN COUNTY RECORDER'S OFFICE.



The bearings shown hereon are based on the Ohio State Plane coordinate system, South Zone, NAD83 (2011). Said bearings originated from a field traverse which was referenced to said coordinate system by GPS observations and observations of selected stations in the Ohio Department of Transportation Virtual Reference Station Network. The portion of the centerline of Noe Bixby Rd., having a bearing of North 15 degrees 31 minutes 41 seconds West, and monumented as described herein, is designated the "Basis of Bearing" for this survey.

THIS DRAWING WAS PREPARED FROM AN ACTUAL FIELD SURVEY MADE BY J & J SURVEYING SERVICES, INC. IN JULY OF 2018, AND REPRESENTS THE PREMISES SHOWN HEREON TO THE BEST OF OUR KNOWLEDGE.

Raymond J. Wood 11/9/18
RAYMOND J. WOOD REG. SURV. 7745 DATE

JOB #18-50

