

E-4-1



Evans, Mechwart, Hambleton & Tilton, Inc.  
 Engineers • Surveyors • Planners • Scientists  
 5500 New Albany Road, Columbus, OH 43054  
 Phone: 614.775.4500 Toll Free: 888.775.3648

emht.com

# SURVEY OF ACREAGE PARCEL

QUARTER TOWNSHIP 3, TOWNSHIP 2, RANGE 17  
 UNITED STATES MILITARY LANDS  
 VILLAGE OF MINERVA PARK, COUNTY OF FRANKLIN, STATE OF OHIO

Date: December 5, 2018  
 Scale: 1" = 40'  
 Job No: 20170823

RECEIVED

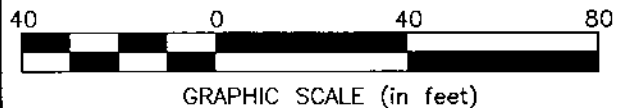
DEC 07 2018

EMHT INC.  
 5500 New Albany Road, Columbus, OH 43054



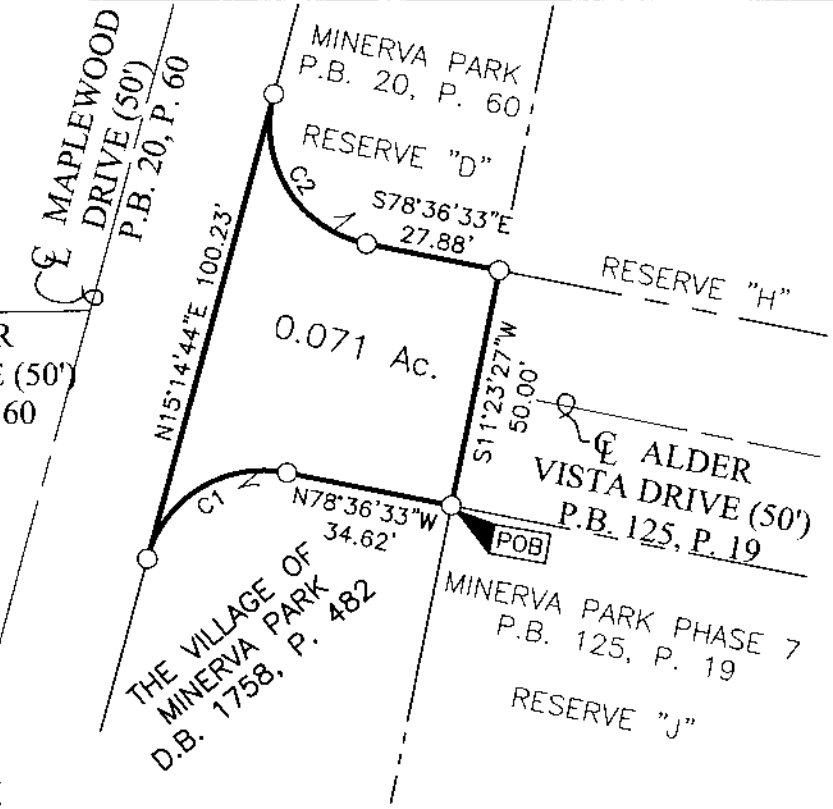
○ = I.P. SET

I.P. Set are 13/16" I.D. iron pipes 30" long with cap inscribed EMHT INC.



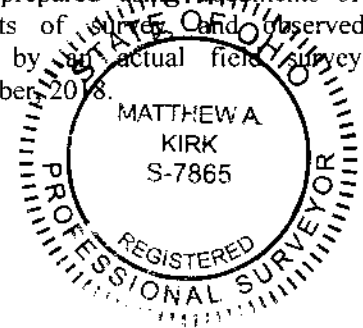
Curve Table

Curve Number	Delta	Radius	Length	Chord Bearing	Chord Distance
C1	86°08'43"	25.00'	37.59'	S58°19'05"W	34.15'
C2	93°51'17"	25.00'	40.95'	S31°40'55"E	36.52'



**BASIS OF BEARINGS:**  
 The bearings shown hereon are based on the Ohio State Plane Coordinate System, South Zone, as per NAD83 (1986). Said bearings originated from a field traverse which was tied (referenced) to said coordinate system by GPS observations of Franklin County Engineering Department monuments FRANK 85, and WEST 17. The bearing of South 11° 23' 27" West assigned to the westerly line of Minerva Park Phase 7 is designated the basis of bearings for this survey.

**SURVEY NOTE:**  
 This survey was prepared using documents of record, prior plats of survey and observed evidence located by an actual field survey prepared in December, 2018.



By Matthew A. Kirk Date 5 DEC 18  
 Matthew A. Kirk  
 Professional Surveyor No. 7865