



Evans, Mechwart, Hambleton & Tilton, Inc.
 Engineers • Surveyors • Planners • Scientists
 5500 New Albany Road, Columbus, OH 43054
 Phone: 614.775.4500 Toll Free: 888.775.3648
 emht.com

SURVEY OF ACREAGE PARCEL

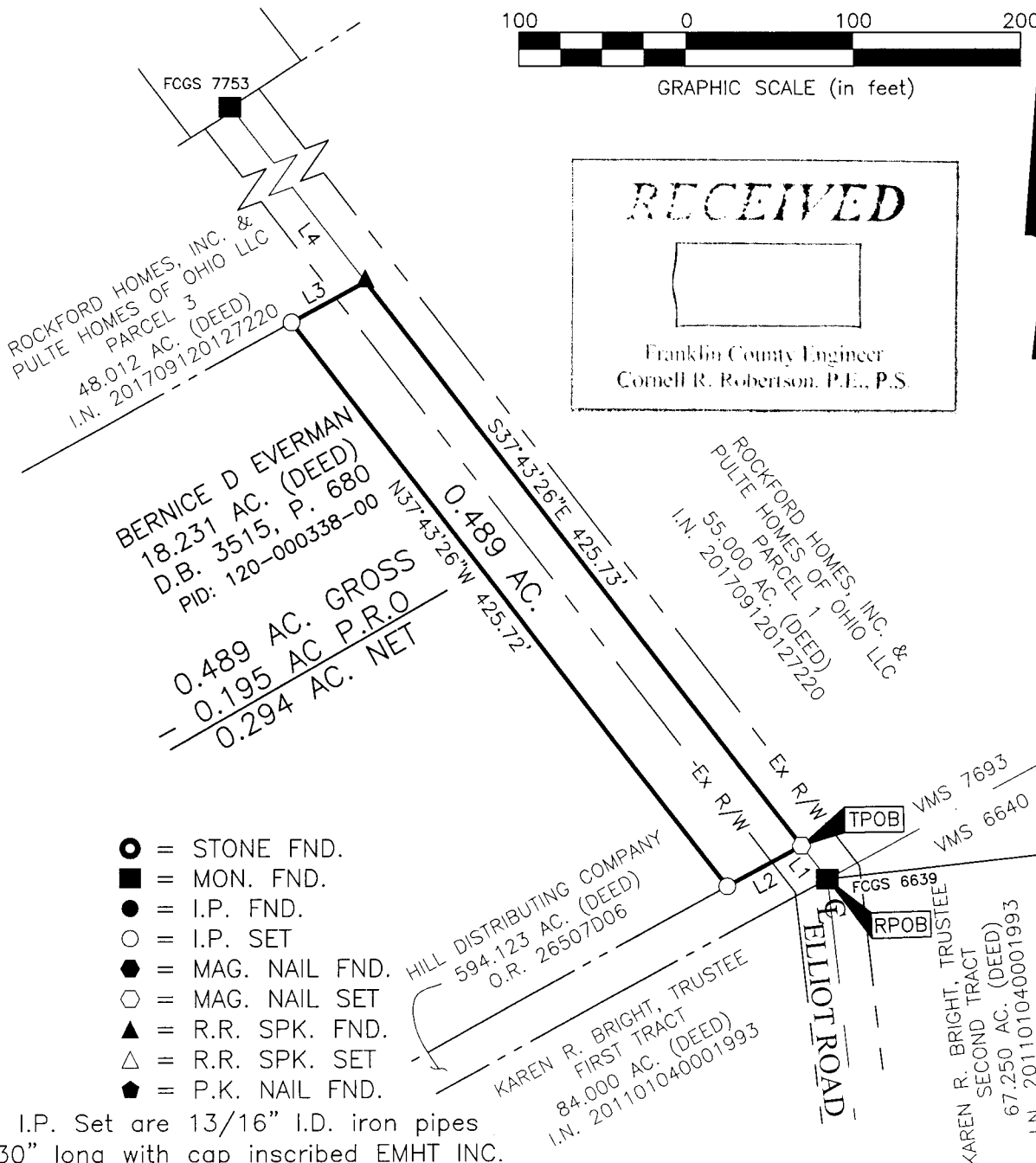
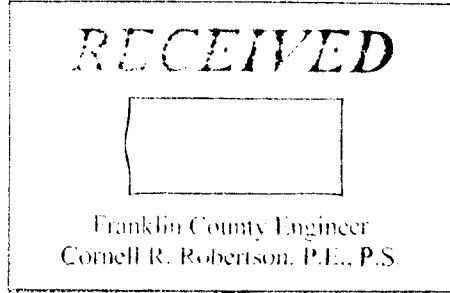
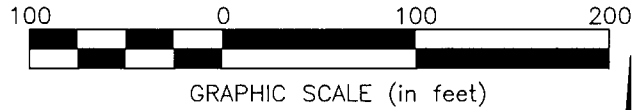
VIRGINIA MILITARY SURVEY NO. 7693

TOWNSHIP OF BROWN, COUNTY OF FRANKLIN, STATE OF OHIO

Date: September 26, 2018

Job No: 2017-1164

Scale: 1" = 100'



- = STONE FND.
- = MON. FND.
- = I.P. FND.
- = I.P. SET
- ◆ = MAG. NAIL FND.
- ◇ = MAG. NAIL SET
- ▲ = R.R. SPK. FND.
- △ = R.R. SPK. SET
- ◆ = P.K. NAIL FND.

I.P. Set are 13/16" I.D. iron pipes
 30" long with cap inscribed EMHT INC.

SURVEY NOTE:

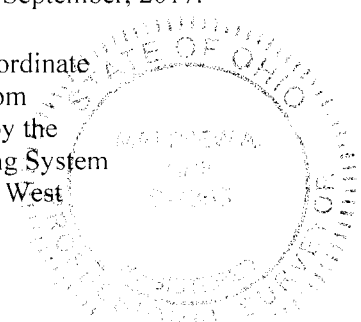
This survey was prepared using documents of record, prior plats of survey, and observed evidence located by an actual field survey performed in September, 2017.

BASIS OF BEARINGS:

The bearings shown hereon are based on the Ohio State Plane Coordinate System, South Zone, NAD83 (2011). Control for bearings was from coordinates of FCGS monuments 7753 and 6639, as established by the Franklin County Engineering Department using Global Positioning System procedures and equipment, having a bearing of North 37° 43' 26" West between said monuments.

LINE TABLE		
LINE	BEARING	DISTANCE
L1	N37°43'26"W	25.31'
L2	S61°14'13"W	50.62'
L3	N61°13'16"E	50.62'
L4	N37°43'26"W	1213.25'

By Matthew A. Kirk Date 26 SEP 18
 Matthew A. Kirk Professional Surveyor No. 7865



J:\20171164\DWG\04SHEETS\EXHIBITS\20171164-VS-EXHB-03.DWG plotted by YOUSSEF, SHERRI on 9/26/2018 3:47:13 PM last saved by YOUSSEF on 9/26/2018 3:47:04 PM Xrefs: