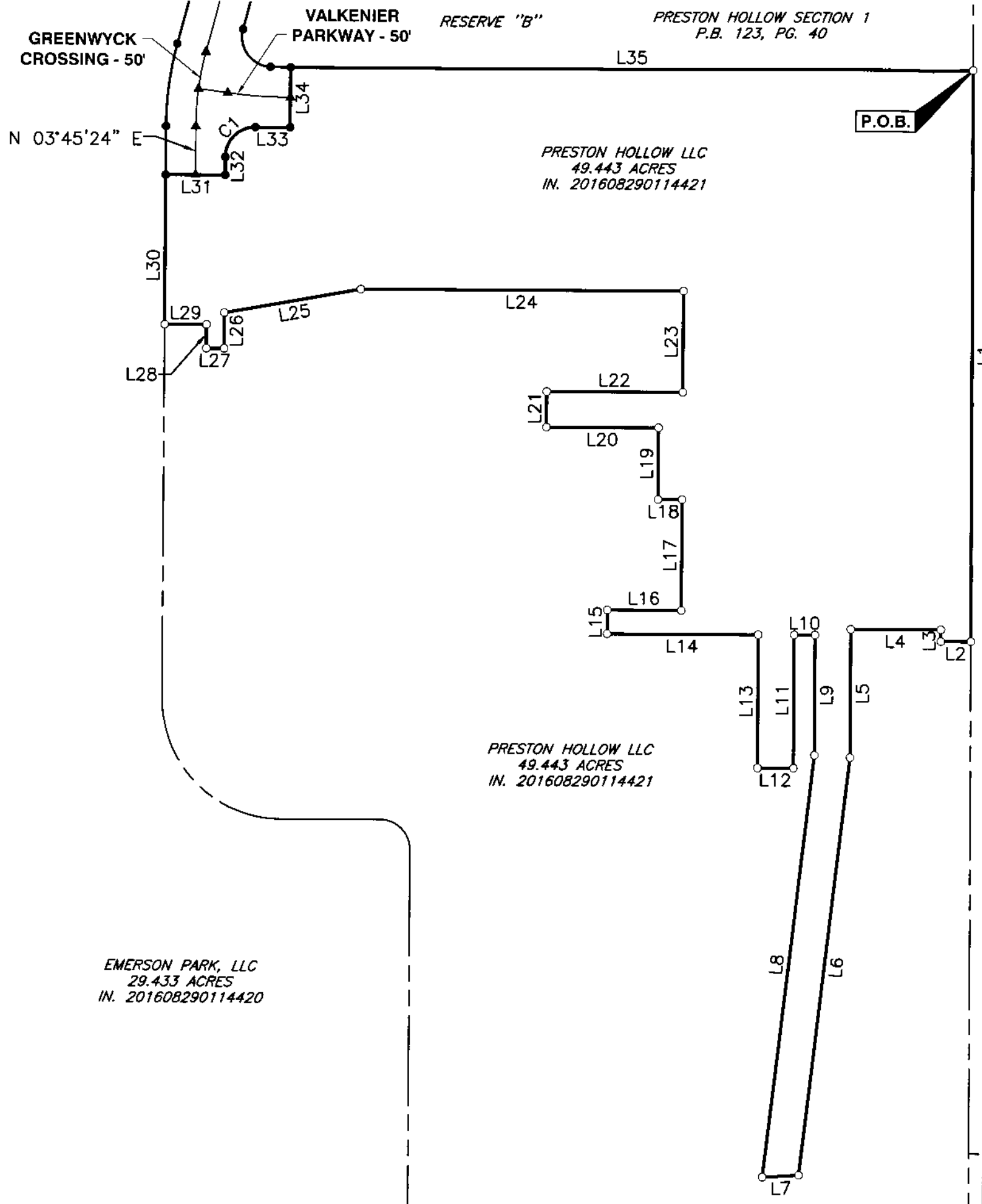
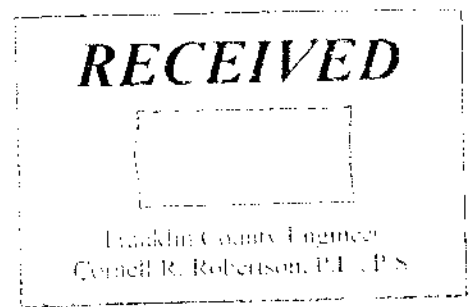


P:\2018\181-933\Survey\Draw\181933-SV01-SPLIT-2.dwg(PLAT -2) LS:(8/20/2018 - dplummer) - LP: 8/24/2018 8:40 AM



PLAT OF SURVEY
 STATE OF OHIO, COUNTY OF FRANKLIN, CITY OF COLUMBUS,
 LOT 7, QUARTER TOWNSHIP 2, TOWNSHIP 2, RANGE 16,
 UNITED STATES MILITARY LANDS.



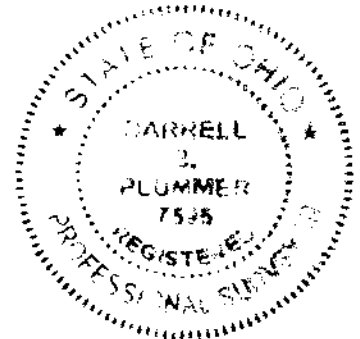
- LEGEND**
- ▲ MAG NAIL FOUND
 - IRON PIN FOUND
 - △ MAG NAIL SET
 - IRON PIN SET
 - ⊙ PERMANENT MARKER

BASIS OF BEARINGS
 THE BEARINGS SHOWN ON THIS SURVEY ARE BASED ON THE BEARING OF NORTH 03°45'24" EAST FOR THE CENTERLINE OF GREENWYCK CROSSING AS DETERMINED BY GPS OBSERVATIONS USING NAD 83 (2011)-OHIO STATE PLANE COORDINATE SYSTEM-SOUTH ZONE.

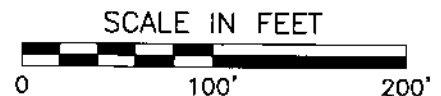
NOTE
 ALL IRON PINS SET ARE 5/8" SOLID REBAR, 30" IN LENGTH WITH A YELLOW PLASTIC CAP BEARING THE INITIALS "CEC".

NEW ALBANY PARK CONDOMINIUM
 ELEVENTH AMENDMENT
 PART B - 14.967 ACRES
 C.P.B. 137, PG. 24
 IN. 200409160216861

WE HEREBY CERTIFY THAT THE FOREGOING BOUNDARY SURVEY WAS PREPARED FROM ACTUAL FIELD MEASUREMENTS IN ACCORDANCE WITH CHAPTER 4733-37 OHIO ADMINISTRATIVE CODE.



Darrell B. Plummer 8/27/2018
 DARRELL B. PLUMMER DATE
 REGISTERED SURVEYOR NO. 7595



EMERSON PARK, LLC
 29.433 ACRES
 IN. 201608290114420

PRESTON HOLLOW LLC
 49.443 ACRES
 IN. 201608290114421

PRESTON HOLLOW LLC
 49.443 ACRES
 IN. 201608290114421

 Civil & Environmental Consultants, Inc. 250 Old Wilson Bridge Road · Suite 250 · Worthington, OH 43085 614-540-6633 · 888-598-6808 www.cecinc.com		CITY OF COLUMBUS FRANKLIN COUNTY, OHIO	
		4.896 ACRES	
DRAWN BY: DBP	CHECKED BY: MAS	APPROVED BY: DBP	DRAWING NO.: 1
DATE: AUGUST 2018	DWG SCALE: 1"=100'	PROJECT NO: 181-933	

PLAT OF SURVEY

STATE OF OHIO, COUNTY OF FRANKLIN, CITY OF COLUMBUS,
 LOT 7, QUARTER TOWNSHIP 2, TOWNSHIP 2, RANGE 16,
 UNITED STATES MILITARY LANDS.

RECEIVED

Franklin County Engineer
 Charles R. Robertson, P.E., P.S.

LINE TABLE		
LINE #	DIRECTION	LENGTH
L1	S 03°37'33" W	477.94'
L2	N 86°22'27" W	25.00'
L3	N 03°37'33" E	10.00'
L4	N 86°14'36" W	75.95'
L5	S 03°45'32" W	107.84'
L6	S 10°26'05" W	352.94'
L7	N 89°48'56" W	30.49'
L8	N 10°26'05" E	356.62'
L9	N 03°45'24" E	101.08'
L10	N 86°14'36" W	17.51'
L11	S 03°45'24" W	112.00'
L12	N 86°14'36" W	30.00'
L13	N 03°45'24" E	112.00'
L14	N 86°14'36" W	126.50'
L15	N 03°45'24" E	20.00'
L16	S 86°14'36" E	62.00'
L17	N 03°45'24" E	93.00'
L18	N 86°14'36" W	20.00'

LINE TABLE		
LINE #	DIRECTION	LENGTH
L19	N 03°45'24" E	60.00'
L20	N 86°14'36" W	94.00'
L21	N 03°45'24" E	30.00'
L22	S 86°14'36" E	114.00'
L23	N 03°45'24" E	85.00'
L24	N 86°14'36" W	270.00'
L25	S 83°41'03" W	115.78'
L26	S 03°45'24" W	30.00'
L27	N 86°14'36" W	15.00'
L28	N 03°45'24" E	20.00'
L29	N 86°14'36" W	35.00'
L30	N 03°45'24" E	125.25'
L31	S 86°14'36" E	50.00'
L32	N 03°45'24" E	15.00'
L33	S 86°14'36" E	28.90'
L34	N 03°45'24" E	50.00'
L35	S 86°14'36" E	571.99'

CURVE TABLE					
CURVE #	RADIUS	DELTA	LENGTH	CHL	CHB
C1	25.00'	90°00'00"	39.27'	35.36'	N 48°45'24" E

NOTE

ALL IRON PINS SET ARE 3/8" SOLID REBAR, 30" IN LENGTH WITH A YELLOW PLASTIC CAP BEARING THE INITIALS "CEC".

WE HEREBY CERTIFY THAT THE FOREGOING BOUNDARY SURVEY WAS PREPARED FROM ACTUAL FIELD MEASUREMENTS IN ACCORDANCE WITH CHAPTER 4733-37 OHIO ADMINISTRATIVE CODE.

LEGEND

- ▲ MAG NAIL FOUND
- IRON PIN FOUND
- △ MAG NAIL SET
- IRON PIN SET
- ⊙ PERMANENT MARKER

BASIS OF BEARINGS

THE BEARINGS SHOWN ON THIS SURVEY ARE BASED ON THE BEARING OF NORTH 03°45'24" EAST FOR THE CENTERLINE OF GREENWYCK CROSSING AS DETERMINED BY GPS OBSERVATIONS USING NAD 83 (2011)-OHIO STATE PLANE COORDINATE SYSTEM-SOUTH ZONE.



Civil & Environmental Consultants, Inc.
 250 Old Wilson Bridge Road · Suite 250 · Worthington, OH 43085
 614-540-6633 · 888-598-6808
 www.cecinc.com

CITY OF COLUMBUS
 FRANKLIN COUNTY, OHIO

4.896 ACRES

DRAWN BY: DBP	CHECKED BY: MAS	APPROVED BY: DBP	DRAWING NO.: 2
DATE: AUGUST 2018	DWG SCALE: N/A	PROJECT NO: 181-933	