

# SURVEY OF ACREAGE PARCEL

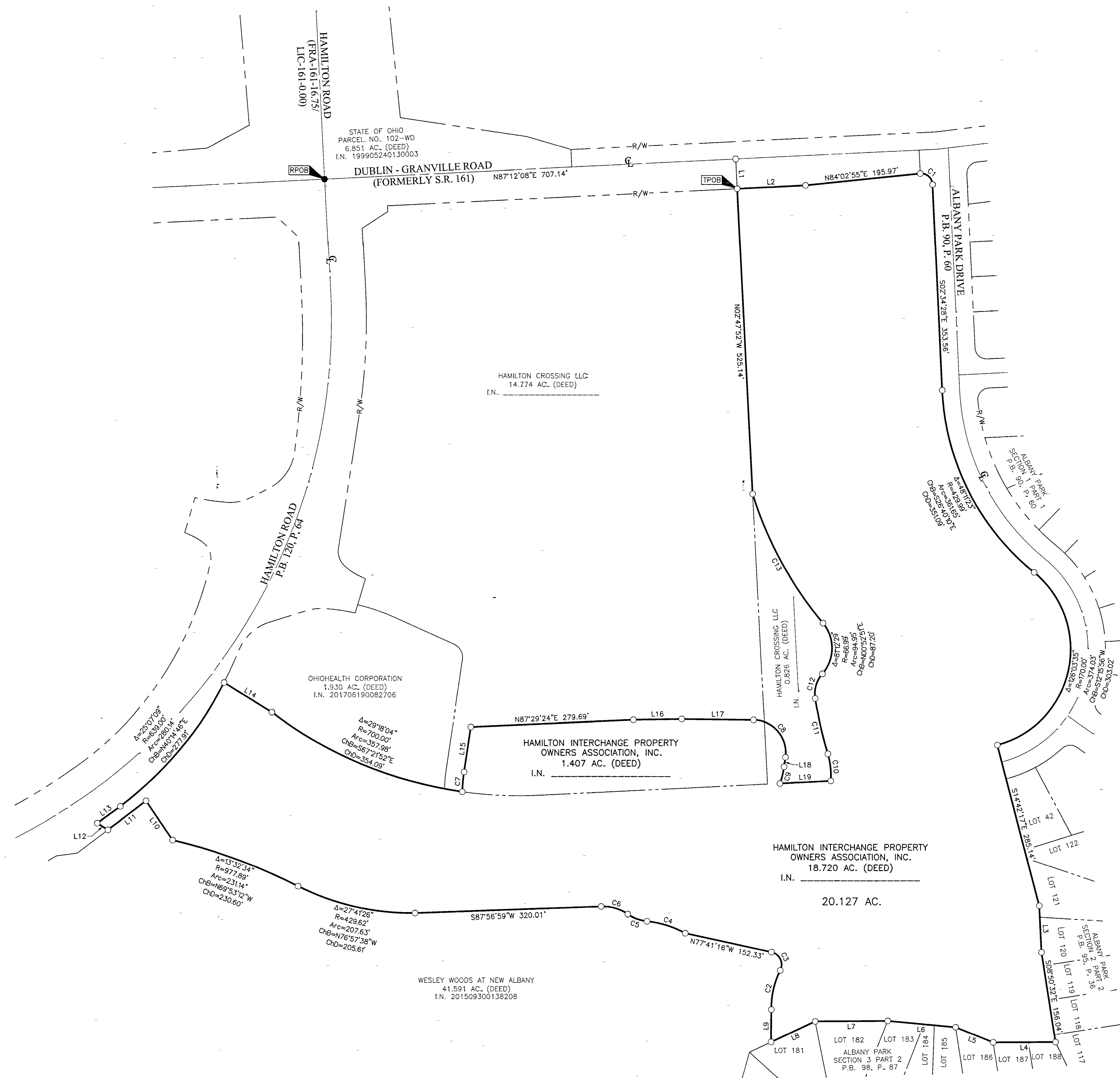
## QUARTER TOWNSHIP 3, TOWNSHIP 2, RANGE 16

### UNITED STATES MILITARY LANDS

### CITY OF COLUMBUS, COUNTY OF FRANKLIN, STATE OF OHIO

**RECEIVED**

Franklin County Engineer  
Cornell R. Robertson, P.E., P.S.



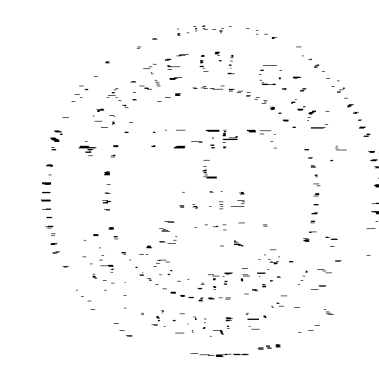
LINE	BEARING	DISTANCE
L1	S02°47'52"E	50.94'
L2	N87°10'58"E	118.04'
L3	S02°40'42"E	80.15'
L4	S89°51'44"W	107.24'
L5	N68°00'33"W	69.88'
L6	N84°43'25"W	116.94'
L7	S89°38'54"W	124.58'
L8	S64°49'29"W	83.85'
L9	N00°34'18"E	55.51'
L10	N34°16'46"W	81.25'
L11	S52°47'40"W	82.00'
L12	N58°06'55"W	21.77'
L13	N54°08'16"E	48.82'
L14	S58°06'56"E	96.48'
L15	N08°40'52"E	78.03'
L16	N89°08'02"E	82.77'
L17	S89°17'07"E	123.90'
L18	S08°14'54"W	16.51'
L19	N87°12'08"E	87.70'

CURVE	DELTA	RADIUS	ARC	CH. BEARING	CH. DIST.
C1	96°31'49"	20.00'	33.70'	S50°50'23"E	29.85'
C2	27°41'24"	144.55'	69.86'	N12°39'47"E	69.18'
C3	104°11'45"	22.08'	40.16'	N25°35'23"W	34.85'
C4	22°49'55"	174.08'	69.37'	N72°39'10"W	68.91'
C5	28°15'17"	71.67'	35.34'	N69°56'29"W	34.99'
C6	36°14'11"	76.90'	48.63'	N73°55'55"W	47.83'
C7	7°18'33"	269.50'	34.38'	N05°01'35"E	34.36'
C8	97°32'01"	56.00'	95.33'	S40°31'07"E	84.23'
C9	10°58'51"	154.00'	29.51'	S13°44'19"W	29.47'
C10	20°45'46"	129.65'	46.98'	N06°15'20"W	46.72'
C11	7°48'20"	712.88'	97.12'	N12°44'03"W	97.04'
C12	50°18'59"	52.03'	45.69'	N16°19'36"E	44.24'
C13	22°29'27"	648.30'	254.48'	N28°28'39"W	252.85'

**BASIS OF BEARINGS:**  
Bearings are based on the Ohio State Plane Coordinate System, South Zone, as per NAD83 (2007 Adjustment). Control for bearings was from coordinates of monuments FCGS 8815 & FCGS 8816, having a bearing of North 03° 23' 04" East for a portion of the centerline of Hamilton Road (Relocated), established by the Franklin County Engineering Department, using Global Positioning System procedures and equipment.

**SURVEY NOTE:**  
This survey was prepared using documents of record, prior plats of survey, and observed evidence located by an actual field survey.

**FEMA NOTE:**  
According to the Federal Emergency Management Agency's Flood Insurance Rate Map No. 39049C0203K (dated June 17, 2008), the subject tract shown herein lies within Zone X (areas determined to be outside of the 0.2% annual chance floodplain).



By Heather L. King 7/24/18  
Heather L. King  
Professional Surveyor No. 8307

<b>EMHT</b> Evans, Mechwart, Hambleton & Tilton, Inc. Engineers • Surveyors • Planners • Scientists 5500 New Albany Road, Columbus, OH 43254 Phone: 614.775.6300 Fax: 614.775.5448 emht.com	Date: July 23, 2018 Scale: 1" = 100' Job No: 2018-0433 Sheet: 1 of 1	
REVISIONS		
MARK	DATE	DESCRIPTION

