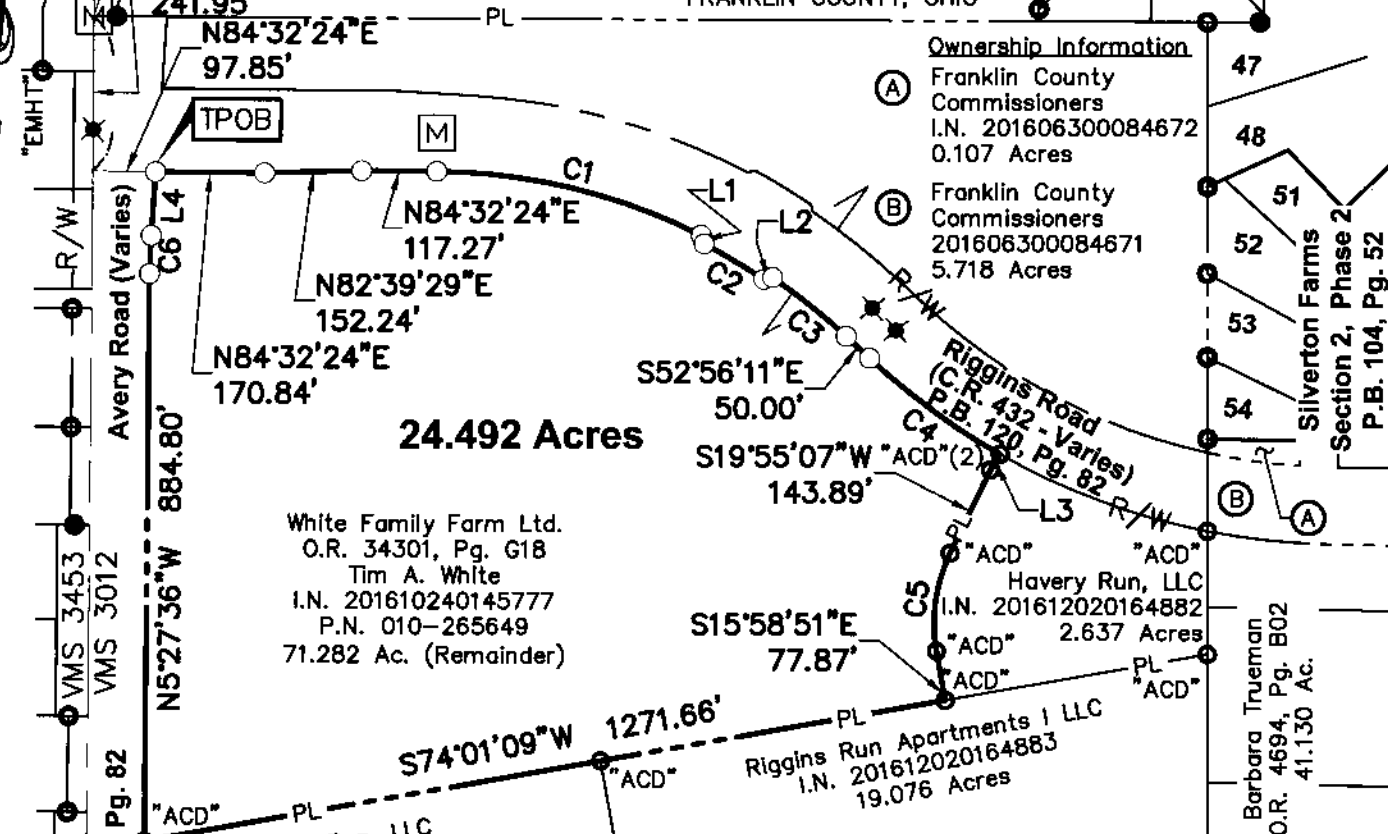


24.492 Ac. Exhibit

Avery Road Columbus LLC
 P.N. 010-265644
 I.N. 201205020060718
 S5°27'36"E 28.000 Ac.

VIRGINIA MILITARY
 SURVEY NO. 3012
 CITY OF COLUMBUS,
 FRANKLIN COUNTY, OHIO

3 Silverton Farms
 Section 3
 P.B. 103, Pg. 13



Ownership Information

(A) Franklin County Commissioners
 I.N. 201606300084672
 0.107 Acres

(B) Franklin County Commissioners
 201606300084671
 5.718 Acres

Riggins Road
 (C.R. 432 - Varies)
 P.B. 120, Pg. 82

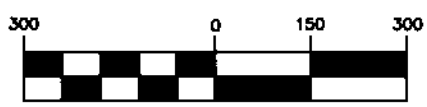
White Family Farm Ltd.
 O.R. 34301, Pg. G18
 Tim A. White
 I.N. 201610240145777
 P.N. 010-265649
 71.282 Ac. (Remainder)

Havery Run, LLC
 I.N. 201612020164882
 17.961 Acres

Riggins Run Apartments I LLC
 I.N. 201612020164883
 19.076 Acres

Barbara Trueman
 O.R. 4694, Pg. B02
 41.130 Ac.

GRAPHIC SCALE



(IN FEET)
 1 inch = 300 ft.

LEGEND

- 5/8" Rebar Found
- Iron Pin Set
- 3/4" Pipe Found
- ⊗ MagNail Set
- ⊗ MagNail Found
- ⊠ Monument Box

LINE TABLE

LINE	DISTANCE	BEARING
L1	14.07'	S24°01'22"E
L2	14.07'	N72°35'45"E
L3	29.01'	S25°36'29"W
L4	98.85'	N01°57'28"W

CURVE TABLE

NO.	DELTA	RADIUS	LENGTH	CHORD BEARING	CHORD DIST.
C1	25°50'18"	952.00'	429.32'	S82°32'26"E	425.69'
C2	6°37'08"	942.00'	108.82'	S65°42'48"E	108.76'
C3	8°52'07"	952.00'	147.36'	S57°22'15"E	147.21'
C4	13°29'08"	1072.00'	252.31'	S59°40'47"E	251.73'
C5	35°56'49"	249.68'	156.65'	S01°58'08"W	154.09'
C6	3°30'01"	971.00'	59.32'	N03°42'36"W	59.31'

Bearings are based on the Ohio State Plane Coordinate System, South Zone, NAD83 (NSRS2007). Said Bearings were derived from GPS observation and determine the centerline of Avery Road to have a bearing of N05°27'36"W between FCGS Monument 8855 and FCGS Monument 2221.

DRAWN BY: JEP JOB NO.: 16-0002-768
 DATE: 07/27/2018 CHECKED BY: JEP



ADVANCED
 CIVIL DESIGN
 ENGINEERS SURVEYORS

422 Beecher Road
 Gahanna, Ohio 43230
 ph 614.428.7750
 fax 614.428.7755

All iron pins set are 3/4" diameter, 30" long iron pipe with plastic cap inscribed "Advanced 7661".
 This Survey is based on existing records from Franklin County, and from actual field survey work.
 ADVANCED CIVIL DESIGN, INC.
 Jonathan E. Phelps Date 7/27/18
 Reg. No. 8241

RECEIVED

Z:\16-0002-768\DWG\PRODUCTION DRAWINGS\SURVEY\0002-768 24.492 Ac Lot Split_MID.dwg Layout1 Jul 26, 2018 - 1:55:32pm jphelps