

RECEIVED

T TERRA
Surveying Services LLC

238 Academy Woods Drive
Gahanna, Ohio 43230-2184
614.471.0663
www.terrasurveyingservices.com

PARCEL CONSOLIDATION SURVEY OF 4.393 ACRES
LOCATED IN QUARTER TOWNSHIP 3, TOWNSHIP 1, RANGE 16
UNITED STATES MILITARY SURVEY
CITY OF GAHANNA, FRANKLIN COUNTY, OHIO

PREPARED EXCLUSIVELY FOR:
GAHANNA CITY ENGINEER'S OFFICE

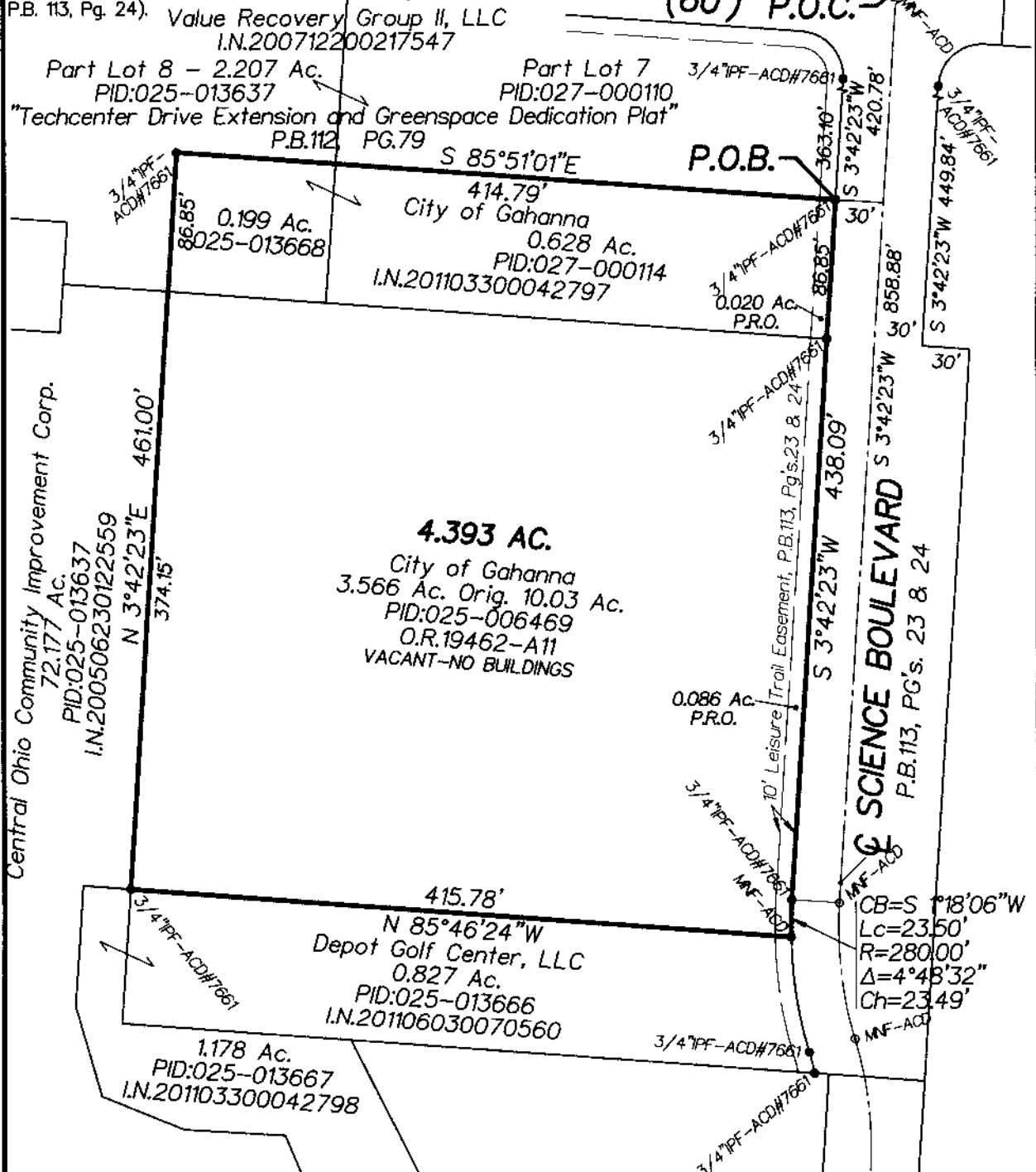
30 JULY 2015

P.B.112, PG.79-84 & P.B.113, PG.23&24
INSTRUMENT NO. 201103300042797
OFFICIAL RECORD 19462-A11

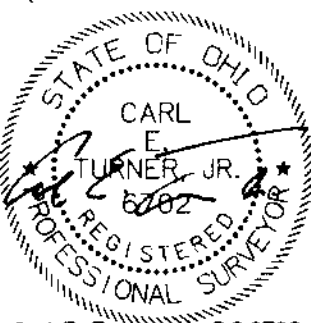
BEARINGS are referenced to Grid North, Ohio State Plane Coordinate System (NAD83 South Zone-2011 Adj.), and specifically the bearing of South 3°42'23" West for the centerline of Science Boulevard (see P.B. 113, Pg. 24).



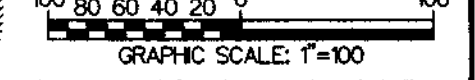
TECHCENTER DRIVE
(60') P.O.C.



SURVEYOR'S STATEMENT:
We Hereby Declare that this plat/map was prepared from an actual survey of the premises, that to the best of our knowledge, information & belief, correctly shows the location of the boundaries. Only those easements specifically brought to our attention, or those which we had special knowledge of are shown hereon. Any zoning, setback or sideyard data, underground public or quasi public utilities or substructures shown hereon are informational only.



SURVEY MONUMENTS:
Found (F)=●, Set (S)=○; IP=Iron Pipe (ID); SP=Solid Pin (OO); RB=Rebar; RS=Railroad Spike; PS=Pony Spike & PK=PK Nail. RBS=5/8" rebar set with yellow cap inscribed TERRA SURVEY/TURNER PS6702.



NOT AN AUTHORIZED DOCUMENT WITHOUT EMBOSSED OVER BLUE INK SURVEYOR'S SEAL