



Evans, Mechwart, Hambleton & Tilton, Inc.  
 Engineers • Surveyors • Planners • Scientists  
 5500 New Albany Road, Columbus, OH 43054  
 Phone: 614.775.4500 Toll Free: 888.775.3648  
 emht.com

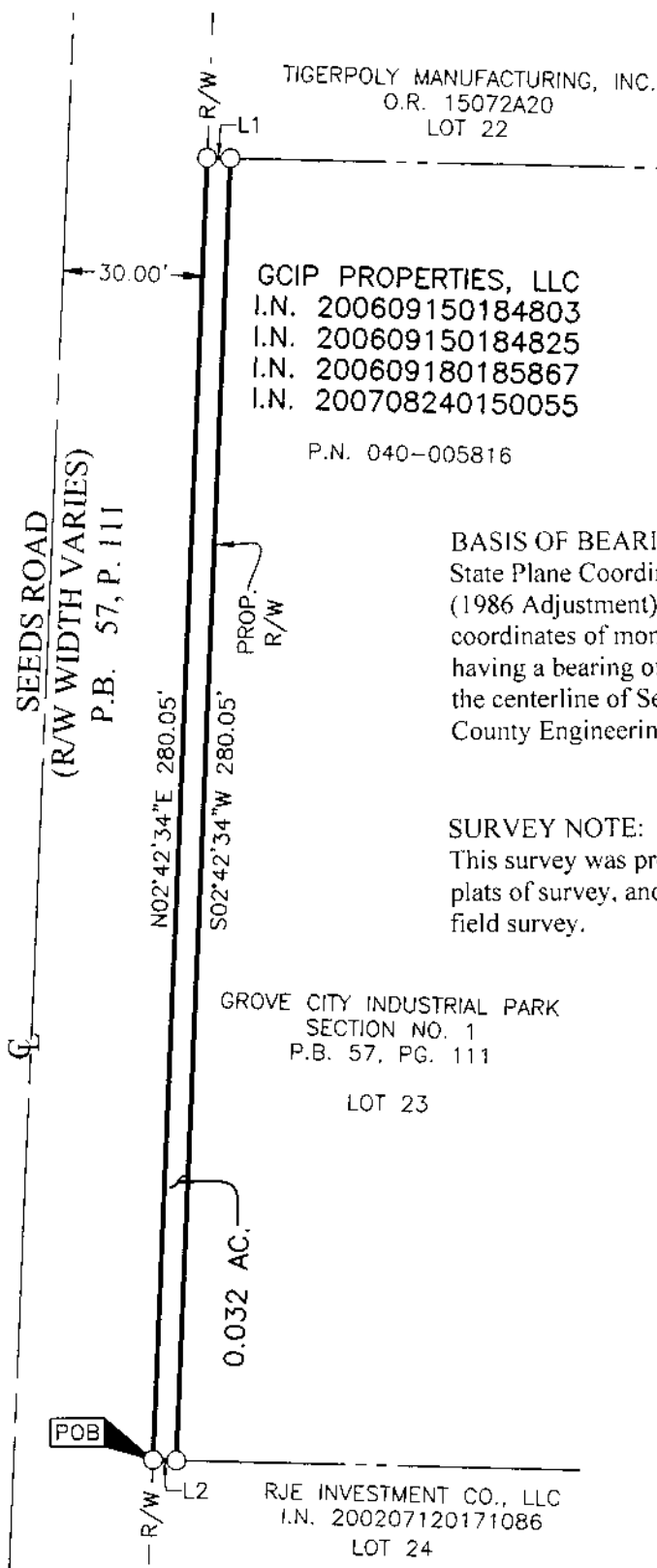
# SURVEY OF ACREAGE PARCEL

VIRGINIA MILITARY DISTRICT SURVEY NUMBER 6115  
 CITY OF GROVE CITY, COUNTY OF FRANKLIN, STATE OF OHIO

Date: May 25, 2018

Job No: 2018-0153

Scale: 1" = 40'



| LINE TABLE |             |          |
|------------|-------------|----------|
| LINE       | BEARING     | DISTANCE |
| L1         | S88°20'17"E | 5.00'    |
| L2         | N88°20'17"W | 5.00'    |

TIGERPOLY MANUFACTURING, INC.  
 O.R. 15072A20  
 LOT 22

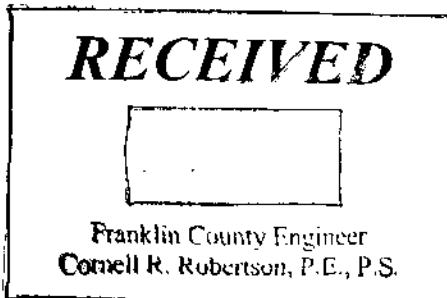
GCIP PROPERTIES, LLC  
 I.N. 200609150184803  
 I.N. 200609150184825  
 I.N. 200609180185867  
 I.N. 200708240150055

P.N. 040-005816

**BASIS OF BEARINGS:** Bearings are based on the Ohio State Plane Coordinate System, South Zone, per NAD83 (1986 Adjustment). Control for bearings was from coordinates of monuments FCGS 5548 & FCGS 5539, having a bearing of North 02° 42' 34" East for a portion of the centerline of Seeds Road, established by the Franklin County Engineering Department.

**SURVEY NOTE:**  
 This survey was prepared using documents of record, prior plats of survey, and observed evidence located by an actual field survey.

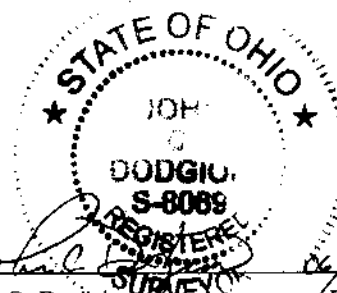
GROVE CITY INDUSTRIAL PARK  
 SECTION NO. 1  
 P.B. 57, PG. 111  
 LOT 23



O = I.P. SET  
 I.P. Set are 13/16" I.D. iron pipes  
 30" long with cap inscribed EMHT INC.



GRAPHIC SCALE (in feet)



By *John C. Dodgion* Date *06/14/2018*  
 John C. Dodgion Professional Surveyor No. 8069

J:\20180153\DWG\04SHEETS\BOUNDARY\20180153-VS-BNDY-RWAY-N-P012.DWG plotted by GEIGER, STEVEN on 6/12/2018 10:54:37 AM last saved by APHILPOTT on 5/29/2018 2:34:59 PM  
 Xrefs: