



Evans, Mechwart, Hambleton & Tilton, Inc.  
 Engineers • Surveyors • Planners • Scientists  
 5500 New Albany Road, Columbus, OH 43054  
 Phone: 614.775.4500 Toll Free: 888.775.3648  
 emht.com

# SURVEY OF ACREAGE PARCEL

SURVEY NUMBER 6115

VIRGINIA MILITARY DISTRICT

CITY OF GROVE CITY, COUNTY OF FRANKLIN, STATE OF OHIO

Date: May 25, 2018

Scale: 1" = 40'

Job No: 2018-0153

**SURVEY NOTE:**

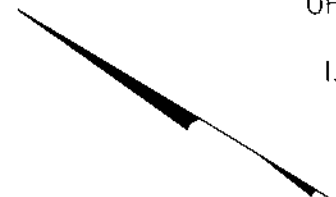
This survey was prepared using documents of record, prior plats of survey, and observed evidence located by an actual field survey.

GROVE CITY INDUSTRIAL PARK  
 SECTION NO. 1  
 P.B. 57, PG. 111

PART OF LOT 2  
 UHRIN ENTERPRISES, INC.  
 0.800 AC. (DEED)  
 I.N. 200702150027867  
 O.R. 7030G02  
 P.N. 040-006289

PART OF LOT 2  
 E. FAYE COWAN  
 1.119 AC. (DEED)  
 I.N. 201405050054957  
 P.N. 040-005807

LOT 3  
 ELECTRO-GENERAL PLASTICS CORP.  
 OF COLUMBUS  
 I.N. 201609080120359  
 P.N. 040-005808

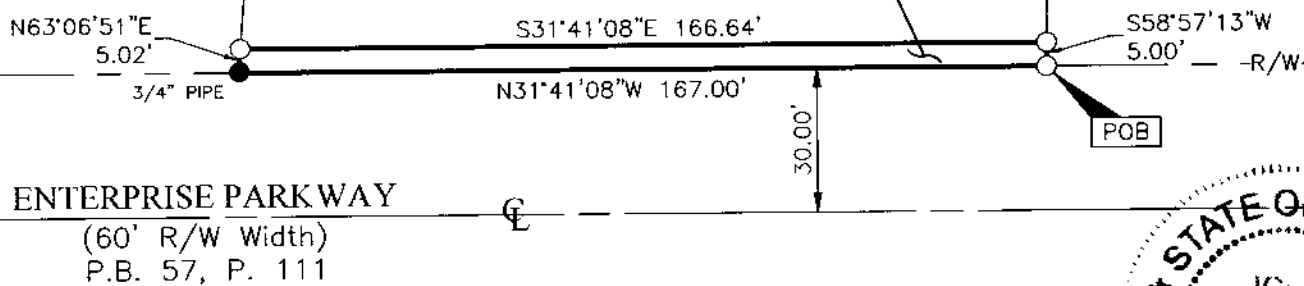


- = STONE FND.
- = MON. FND.
- = I.P. FND.
- = I.P. SET
- = MAG. NAIL FND.
- = MAG. NAIL SET
- ▲ = R.R. SPK. FND.
- △ = R.R. SPK. SET
- = P.K. NAIL FND.

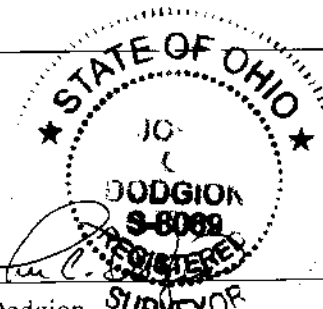
I.P. Set are 13/16" I.D.  
 iron pipes 30" long with  
 cap inscribed EMHT INC.



GRAPHIC SCALE (in feet)



**BASIS OF BEARINGS:** Bearings are based on the Ohio State Plane Coordinate System, South Zone, per NAD83 (1986 Adjustment). Control for bearings was from coordinates of monuments FCGS 5548 & FCGS 5539, having a bearing of North 02° 42' 34" East for a portion of the centerline of Seeds Road, established by the Franklin County Engineering Department.



By John C. Dodgion  
 John C. Dodgion  
 Professional Surveyor No. 8069

06/14/2018  
 Date

