

RECEIVED

Survey of Existing Right of Way  
0.783 Ac.  
County of Franklin, Ohio  
City of Columbus  
Virginia Military Survey No. 544

1  
1

- Legend**
- PL Property Line
  - R/W Right-of-Way
  - Mag Spike set (if denoted) or Iron Pin Set
  - Iron Pin Found (IPF)
  - (D) Deed or Plat
  - (M) Measured Distance
  - POC Point of Commencement
  - POB Point of Beginning
  - Survey of Existing Right of Way
  - M Franklin County Monument

FRANKLIN COUNTY MONUMENT 1527  
1" IPF ALUMINUM CAPPED  
P.C. (STA. 20+28.15)

**BASIS OF BEARING**  
The bearings shown on this plat are based on the Ohio State Plane Coordinate System, South Zone, NAD83 (2012A). Control for bearings was from coordinates of monuments FCGS 1638 and FCGS 1527, as established by the Franklin County Engineering Department, using Global Positioning System procedures and equipment, with a bearing of N48°06'00"W for a portion of the centerline of Dublin Road and is designated the "Basis of Bearing" for this plat.

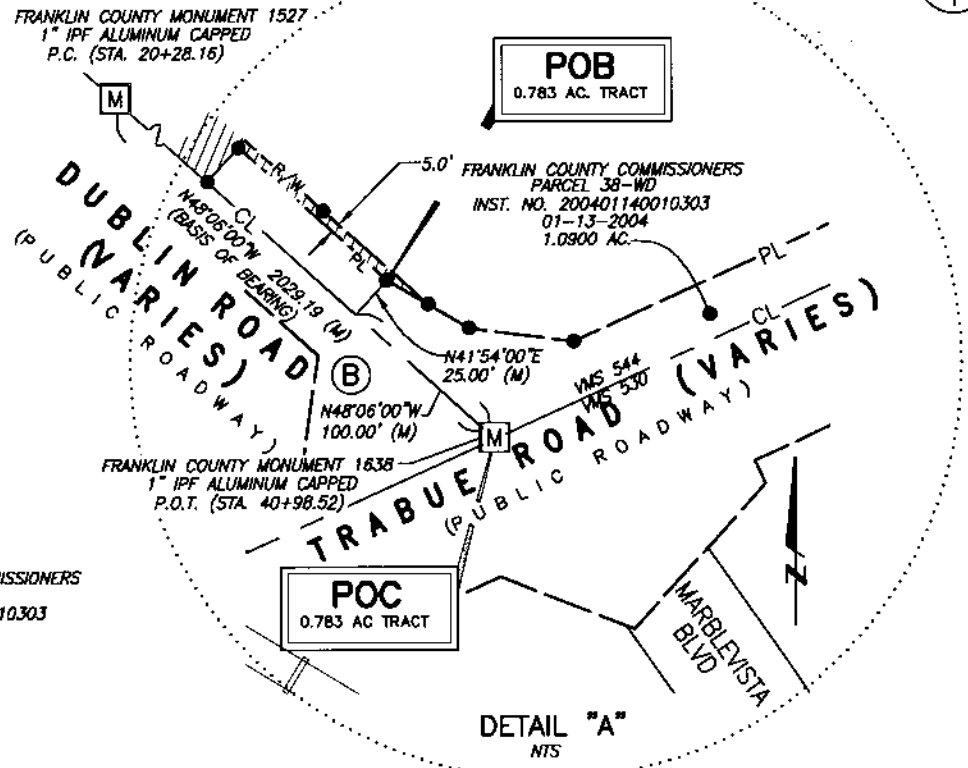
- (E) FRANKLIN COUNTY COMMISSIONERS  
Instr. No. 200212200328021  
37-WD-2  
0.3948 Ac. (D)
- (F) FRANKLIN COUNTY COMMISSIONERS  
Instr. No. 200308210265808  
35-WD  
0.2145 AC.
- (G) DUBLIN ROAD MINI-STORAGE LTD  
ORV. 33880F14  
Pcl. No. 560-191404  
0.741 AC.
- (H) DUBLIN ROAD MINI-STORAGE LTD  
ORV. 33880F14  
Pcl. No. 560-154611  
1.0 AC.

- (I) FDD ENTERPRISES LTD  
Pcl. No. 560-154711  
Instr. No. 199905210129194  
1.432 AC.
- (J) ALBERT E. STIEGMAN, JR & ELIZABETH ASHBY PLANT  
Pcl. No. 560-215017  
Instr. No. 201106300108519  
6.411 AC.
- (K) FRANKLIN COUNTY COMMISSIONERS  
OR. 21964004  
1-WD  
0.225 Ac. (D)
- (L) FRANKLIN COUNTY COMMISSIONERS  
OR. 25622106  
COURT OF COMMON PLEAS  
CASE NO. 93CV07-4909  
2-WD  
0.226 Ac. (D)

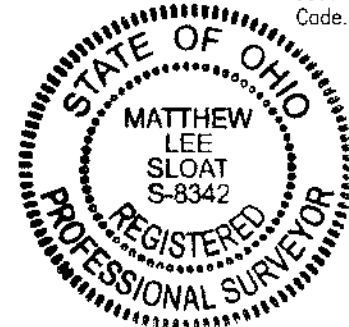
**CONTACT:**  
880 KING AVENUE  
COLUMBUS, OHIO 43212  
(614) 299-2999  
(614) 299-2992 (Fax)  
www.EPFERRIS.com

LINE TABLE		
LINE	LENGTH	BEARING
①	530.00'	N48°06'00"W
②	25.00'	S41°54'00"W
③	1041.32'	N48°06'00"W
④	31.83'	N22°22'02"E
⑤	1606.96'	S48°06'00"E
⑥	25.49'	N59°24'37"W

Scale: 1"=400'  
0 200 400 800



Iron pins set are 5/8" rebar, 30" in length with a yellow plastic cap with "EP FERRIS SURVEYOR 8342" inscribed on top.  
Mag spikes set are set in solid rock and are 3" long, 3/8" shaft diameter magnetic spikes with a 1" diameter head with a 2" diameter brass washer with "EP FERRIS SURVEYOR 8342" inscribed on top.  
Field survey was conducted from 11-01-16 to 11-14-17. We hereby certify that the foregoing Boundary Survey was prepared from actual field measurements in accordance with Chapter 4733-37 Ohio Administrative Code.



*Matthew Lee Sloat* 1/30/18  
Matthew Lee Sloat, P.E., P.S.  
Registered Surveyor No. 8342

DRWN BY CRK CHK BY MLS DATE 01-25-18  
1005013

**E. P. FERRIS**  
AND ASSOCIATES  
Consulting Civil Engineers and Surveyors