



Evans, Mechwart, Hambleton & Tilton, Inc.
 Engineers • Surveyors • Planners • Scientists
 5500 New Albany Road, Columbus, OH 43054
 Phone: 614.775.4500 Toll Free: 888.775.3648
 emht.com

SURVEY OF ACREAGE PARCEL

VIRGINIA MILITARY SURVEY NO. 1388

CITY OF GROVE CITY, COUNTY OF FRANKLIN, STATE OF OHIO

Date: April 17, 2018

Scale: 1" = 20'

Job No: 2016-0121

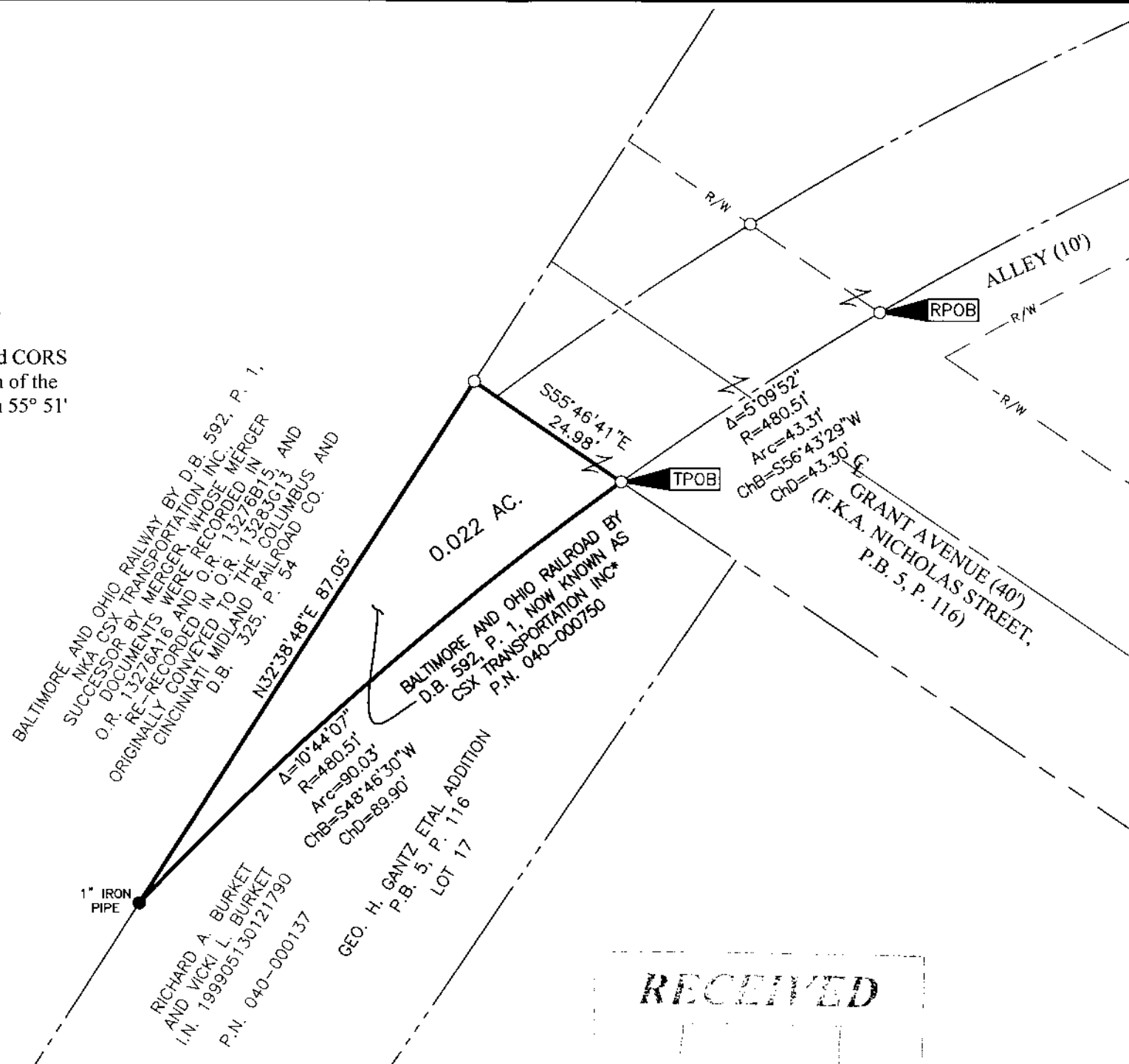
*SUCCESSOR BY MERGER, WHOSE MERGER DOCUMENTS HAVE BEEN SUMMARIZED AND RECORDED AS OFFICIAL RECORD 13276 A16 AND OFFICIAL RECORD 13276 B15, SUBSEQUENTLY RE-RECORDED AS OFFICIAL RECORD 13283 G13. ORIGINALLY CONVEYED TO THE COLUMBUS AND CINCINNATI MIDLAND RAILROAD CO. D.B. 184, P. 540

BASIS OF BEARINGS:

The bearings shown on this plat are based on the Ohio State Plane Coordinate System, South Zone, NAD83 (CORS96). Said bearings originated from a field traverse which was tied (referenced) to said coordinate system by GPS observations and observations of selected CORS base stations in the National Spatial Reference System. The portion of the southerly right-of-way line of Mill Street, having a bearing of South 55° 51' 52" East, is designated the "basis of bearing" for this survey.

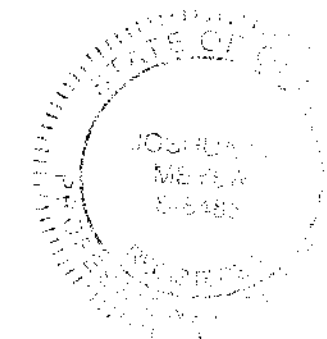
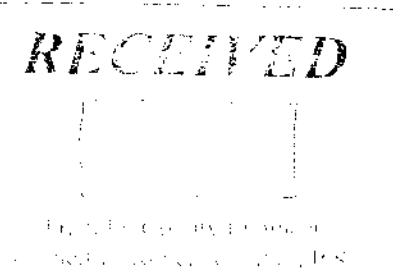
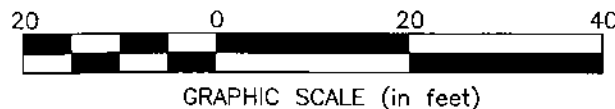
SURVEY NOTE:

This survey was prepared using documents of record, prior plats of survey, and observed evidence located by an actual field survey in May 2002, June 2010, October 2013, and October 2014 and November 2016.



- = STONE FND.
- = MON. FND.
- = I.P. FND.
- = I.P. SET
- = MAG. NAIL FND.
- = MAG. NAIL SET
- ▲ = R.R. SPK. FND.
- △ = R.R. SPK. SET
- = P.K. NAIL FND.

I.P. Set are 13/16" I.D. iron pipes 30" long with cap inscribed EMHT INC.



By Joshua M. Meyer Date 4-17-2018
 Joshua M. Meyer
 Professional Surveyor No. 8485

J:\20160121\DWG\045SHEETS\BOUNDARY_20160121-VS-BNDY-08.DWG plotted by MEYER, JOSH on 4/17/2018 7:43:21 AM last saved by JMEYER on 4/17/2018 7:42:49 AM