

SURVEY OF ACREAGE PARCEL

QUARTER TOWNSHIP 3, TOWNSHIP 2, RANGE 16

UNITED STATES MILITARY LANDS

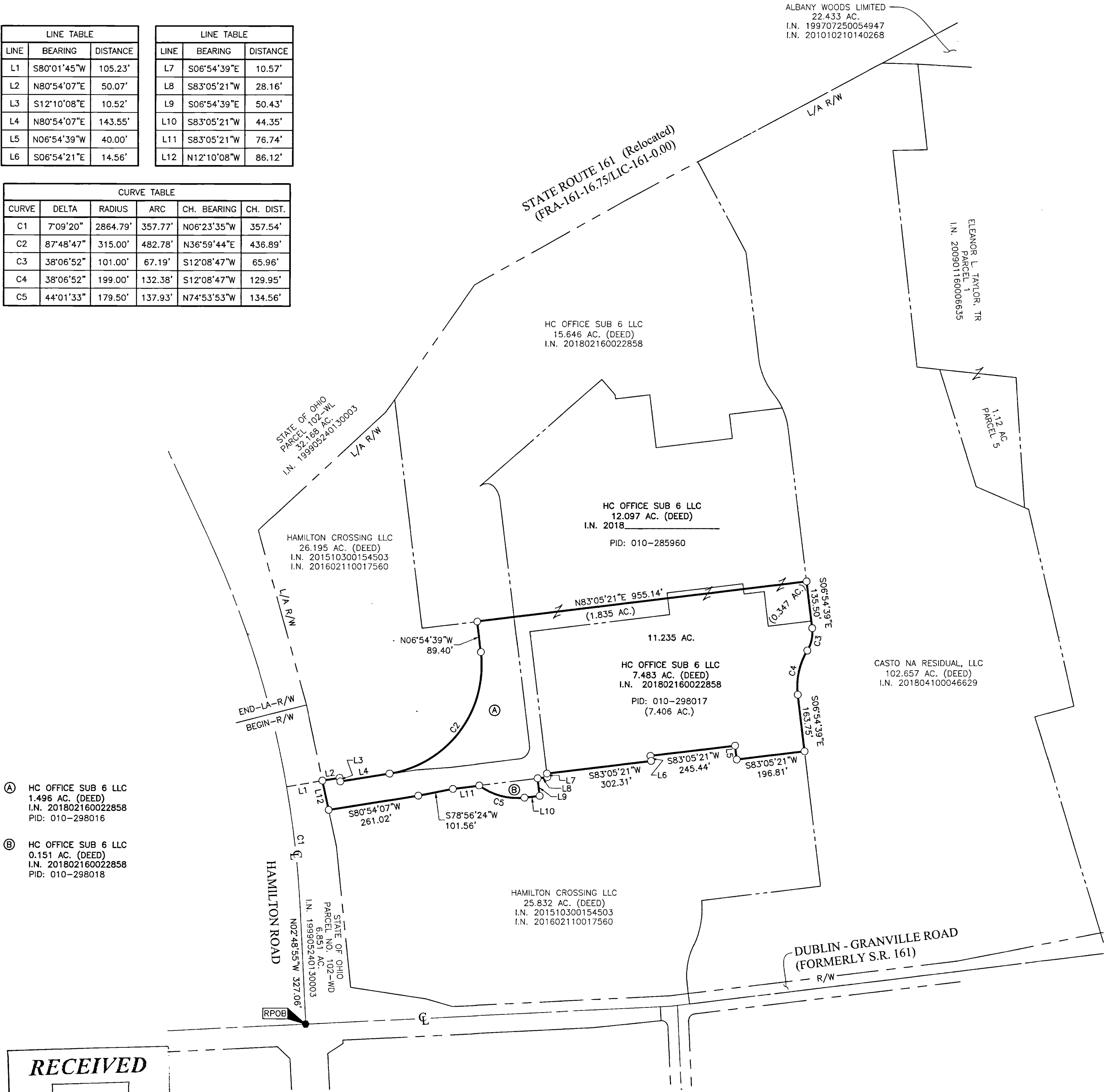
CITY OF COLUMBUS, COUNTY OF FRANKLIN, STATE OF OHIO

ALBANY WOODS LIMITED
22.433 AC.
I.N. 199707250054947
I.N. 201010210140268

LINE	BEARING	DISTANCE
L1	S80°01'45"W	105.23'
L2	N80°54'07"E	50.07'
L3	S12°10'08"E	10.52'
L4	N80°54'07"E	143.55'
L5	N06°54'39"W	40.00'
L6	S06°54'21"E	14.56'

LINE	BEARING	DISTANCE
L7	S06°54'39"E	10.57'
L8	S83°05'21"W	28.16'
L9	S06°54'39"E	50.43'
L10	S83°05'21"W	44.35'
L11	S83°05'21"W	76.74'
L12	N12°10'08"W	86.12'

CURVE	DELTA	RADIUS	ARC	CH. BEARING	CH. DIST.
C1	7°09'20"	2864.79'	357.77'	N06°23'35"W	357.54'
C2	87°48'47"	315.00'	482.78'	N36°59'44"E	436.89'
C3	38°06'52"	101.00'	67.19'	S12°08'47"W	65.96'
C4	38°06'52"	199.00'	132.38'	S12°08'47"W	129.95'
C5	44°01'33"	179.50'	137.93'	N74°53'53"W	134.56'



- Ⓐ HC OFFICE SUB 6 LLC
1.496 AC. (DEED)
I.N. 201802160022858
PID: 010-298016
- Ⓑ HC OFFICE SUB 6 LLC
0.151 AC. (DEED)
I.N. 201802160022858
PID: 010-298018

RECEIVED

Franklin County Engineer
Cornell R. Robertson, P.E., P.S.

BASIS OF BEARINGS:
Bearings are based on the Ohio State Plane Coordinate System, South Zone, as per NAD83 (2007 Adjustment). Control for bearings was from coordinates of monuments FCGS 8815 & FCGS 8816, having a bearing of North 03° 23' 04" East for a portion of the centerline of Hamilton Road (Relocated), established by the Franklin County Engineering Department, using Global Positioning System procedures and equipment.

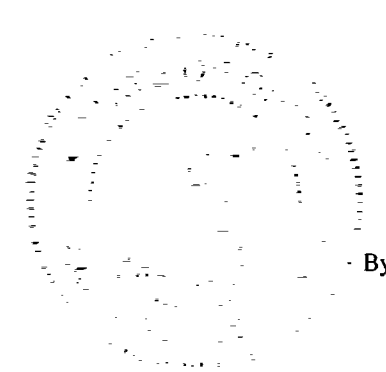
FEMA NOTE:
According to the Federal Emergency Management Agency's Flood Insurance Rate Map No. 39049C0203K (dated June 17, 2008), the subject tract shown hereon lies within Zone AE (Base Flood Elevations determined), Zone "X" (areas of 0.2% annual chance flood; areas of 1% annual chance flood with average depths of less than 1 foot or with drainage areas less than 1 square mile; and areas protected by levees from 1% annual chance flood) and Zone X (areas determined to be outside of the 0.2% annual chance floodplain).

SURVEY NOTE:
This survey was prepared using documents of record, prior plats of survey, and observed evidence located by an actual field survey.

- = STONE FND.
- = MON. FND.
- = I.P. FND.
- = I.P. SET
- = MAG. NAIL FND.
- = MAG. NAIL SET
- ▲ = R.R. SPK. FND.
- △ = R.R. SPK. SET
- ◆ = P.K. NAIL FND.

I.P. Set are 13/16" I.D. iron pipes 30" long with cap inscribed EMHT INC.

200 0 200 400
GRAPHIC SCALE (in feet)



By *Heather L. King* 6/15/18
Heather L. King Date
Professional Surveyor No. 8307

EMHT Evans, Mechwart, Hambleton & Tilton, Inc. Engineers • Surveyors • Planners • Scientists 5500 New Albany Road, Columbus, OH 43054 Phone: 614.775.4500 Toll Free: 888.775.3648 emht.com		Date: February 9, 2018
		Scale: 1" = 200'
		Job No: 2017-0914
		Sheet: 1 of 1
REVISIONS		
MARK	DATE	DESCRIPTION
HLK	6/1/18	Update owner information

J:\20170914-DWG\04-SHEETS\BOUNDARY\20170914-VS-BNDY-05.DWG plotted by KING on 6/9/2018 1:14:38 PM