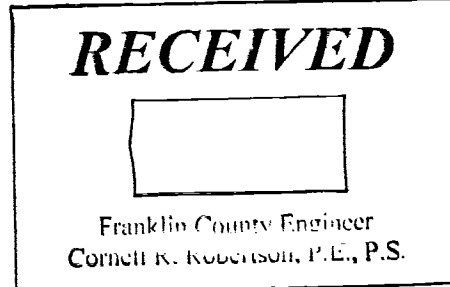
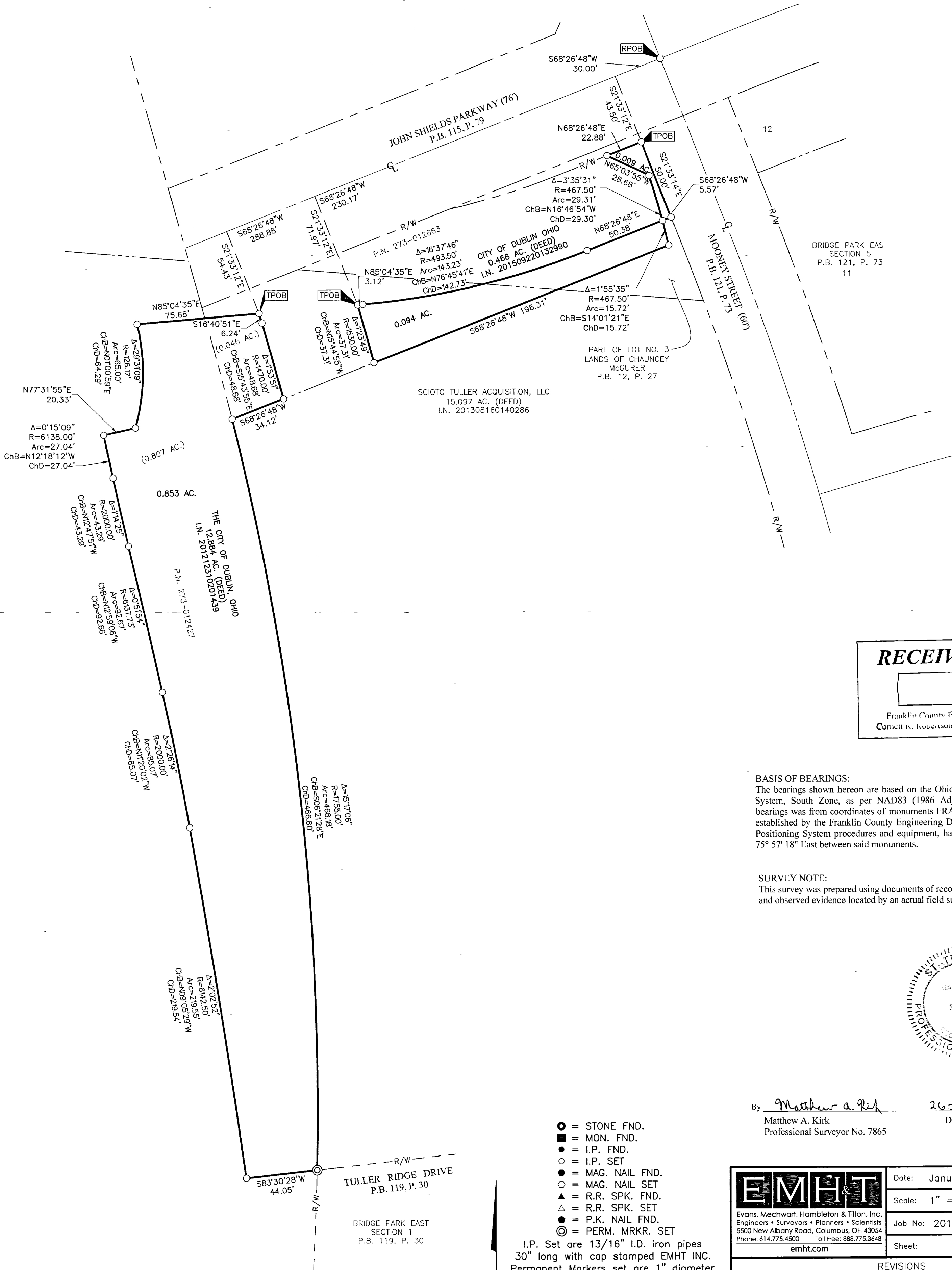


SURVEY OF ACREAGE PARCELS

QUARTER TOWNSHIP 2, TOWNSHIP 2, RANGE 19

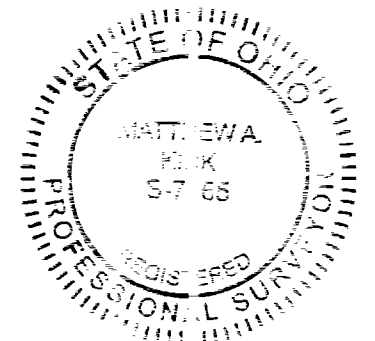
UNITED STATES MILITARY LANDS

CITY OF DUBLIN, COUNTY OF FRANKLIN, STATE OF OHIO



BASIS OF BEARINGS:
 The bearings shown hereon are based on the Ohio State Plane Coordinate System, South Zone, as per NAD83 (1986 Adjustment). Control for bearings was from coordinates of monuments FRANK 73 and FRANK 74, established by the Franklin County Engineering Department, using Global Positioning System procedures and equipment, having a bearing of South 75° 57' 18" East between said monuments.

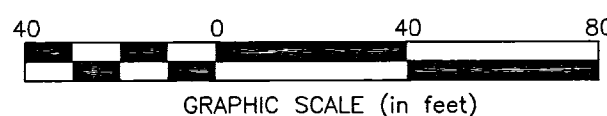
SURVEY NOTE:
 This survey was prepared using documents of record, prior plats of survey, and observed evidence located by an actual field survey.



By Matthew A. Kirk 26 JAN 18
 Matthew A. Kirk Date
 Professional Surveyor No. 7865

- = STONE FND.
- = MON. FND.
- = I.P. FND.
- = I.P. SET
- = MAG. NAIL FND.
- = MAG. NAIL SET
- = R.R. SPK. FND.
- △ = R.R. SPK. SET
- = P.K. NAIL FND.
- ◎ = PERM. MRKR. SET

I.P. Set are 13/16" I.D. iron pipes 30" long with cap stamped EMHT INC. Permanent markers set are 1" diameter solid iron pins 30" long with aluminum cap stamped EMHT INC.



EMHT Evans, Mechwart, Hambleton & Tilton, Inc. Engineers • Surveyors • Planners • Scientists 5500 New Albany Road, Columbus, OH 43054 Phone: 614.775.4500 Toll Free: 888.775.3648 emht.com		Date: January 26, 2018
		Scale: 1" = 40'
		Job No: 2017-0102
		Sheet: 1 of 1
REVISIONS		
MARK	DATE	DESCRIPTION