

SURVEY OF ACREAGE PARCEL

QUARTER TOWNSHIP 3, TOWNSHIP 2, RANGE 16

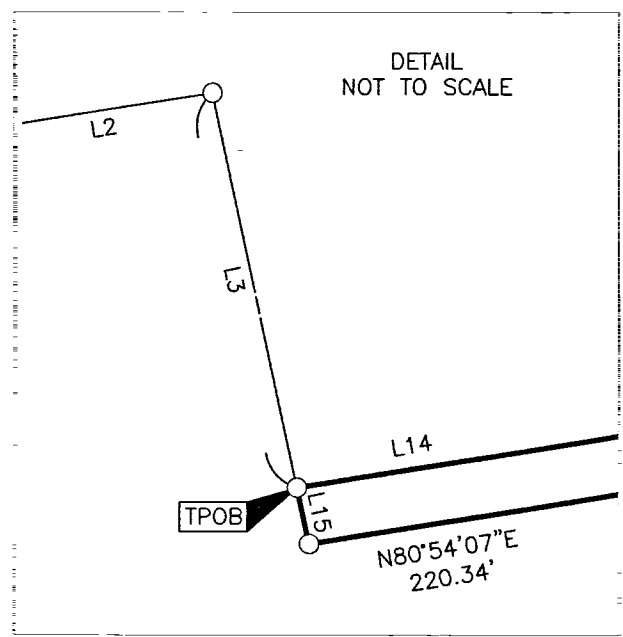
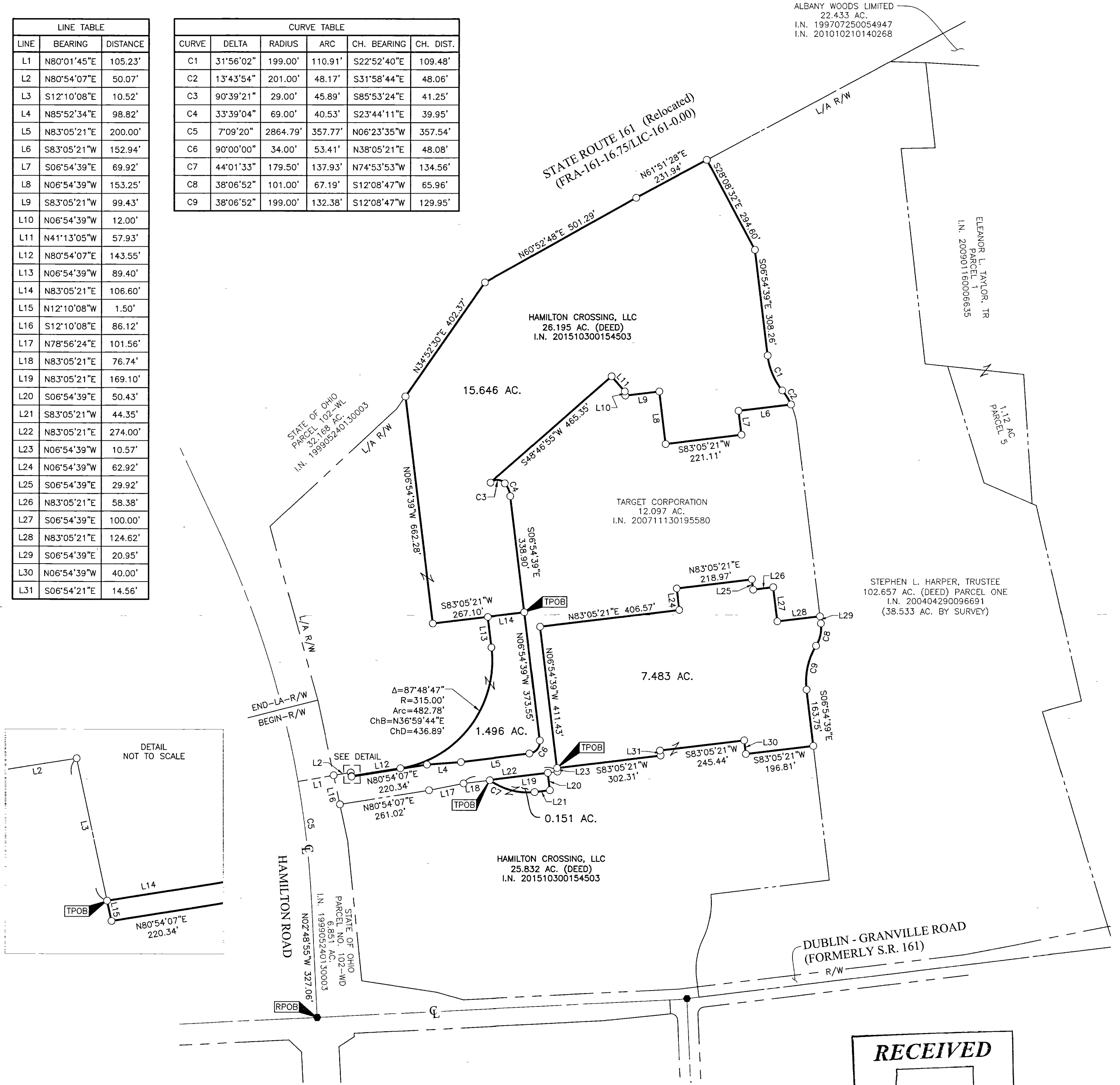
UNITED STATES MILITARY LANDS

CITY OF COLUMBUS, COUNTY OF FRANKLIN, STATE OF OHIO

LINE	BEARING	DISTANCE
L1	N80°01'45"E	105.23'
L2	N80°54'07"E	50.07'
L3	S12°10'08"E	10.52'
L4	N85°52'34"E	98.82'
L5	N83°05'21"E	200.00'
L6	S83°05'21"W	152.94'
L7	S06°54'39"E	69.92'
L8	N06°54'39"W	153.25'
L9	S83°05'21"W	99.43'
L10	N06°54'39"W	12.00'
L11	N41°13'05"W	57.93'
L12	N80°54'07"E	143.55'
L13	N06°54'39"W	89.40'
L14	N83°05'21"E	106.60'
L15	N12°10'08"W	1.50'
L16	S12°10'08"E	86.12'
L17	N78°56'24"E	101.56'
L18	N83°05'21"E	76.74'
L19	N83°05'21"E	169.10'
L20	S06°54'39"E	50.43'
L21	S83°05'21"W	44.35'
L22	N83°05'21"E	274.00'
L23	N06°54'39"W	10.57'
L24	N06°54'39"W	62.92'
L25	S06°54'39"E	29.92'
L26	N83°05'21"E	58.38'
L27	S06°54'39"E	100.00'
L28	N83°05'21"E	124.62'
L29	S06°54'39"E	20.95'
L30	N06°54'39"W	40.00'
L31	S06°54'21"E	14.56'

CURVE	DELTA	RADIUS	ARC	CH. BEARING	CH. DIST.
C1	31°56'02"	199.00'	110.91'	S22°52'40"E	109.48'
C2	13°43'54"	201.00'	48.17'	S31°58'44"E	48.06'
C3	90°39'21"	29.00'	45.89'	S85°53'24"E	41.25'
C4	33°39'04"	69.00'	40.53'	S23°44'11"E	39.95'
C5	7°09'20"	2864.79'	357.77'	N06°23'35"W	357.54'
C6	90°00'00"	34.00'	53.41'	N38°05'21"E	48.08'
C7	44°01'33"	179.50'	137.93'	N74°53'53"W	134.56'
C8	38°06'52"	101.00'	67.19'	S12°08'47"W	65.96'
C9	38°06'52"	199.00'	132.38'	S12°08'47"W	129.95'

ALBANY WOODS LIMITED
22.433 AC.
I.N. 199707250054947
I.N. 201010210140268



$\Delta = 87^\circ 48' 47''$
 $R = 315.00'$
 $Arc = 482.78'$
 $ChB = N36^\circ 59' 44'' E$
 $ChD = 436.89'$

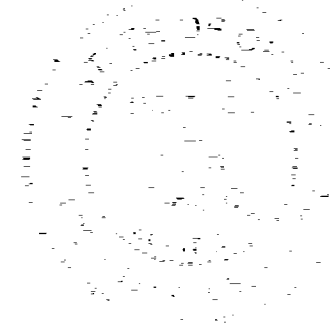
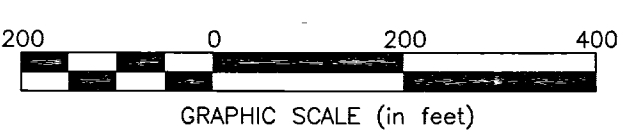
RECEIVED

Franklin County Engineer
Cornell K. Robertson, P.E., P.S.

BASIS OF BEARINGS:
Bearings are based on the Ohio State Plane Coordinate System, South Zone, as per NAD83 (2007 Adjustment). Control for bearings was from coordinates of monuments FCGS 8815 & FCGS 8816, having a bearing of North 03° 23' 04" East for a portion of the centerline of Hamilton Road (Relocated), established by the Franklin County Engineering Department, using Global Positioning System procedures and equipment.

SURVEY NOTE:
This survey was prepared using documents of record, prior plats of survey, and observed evidence located by an actual field survey.

- = STONE FND.
 - = MON. FND.
 - = I.P. FND.
 - = I.P. SET
 - = MAG. NAIL FND.
 - = MAG. NAIL SET
 - ▲ = R.R. SPK. FND.
 - △ = R.R. SPK. SET
 - ◆ = P.K. NAIL FND.
- I.P. Set are 13/16" I.D. iron pipes 30" long with cap inscribed EMHT INC.



By *Heather L. King* 2/6/18
Heather L. King Professional Surveyor No. 8307 Date

<p>Evans, Mechwart, Hambleton & Tilton, Inc. Engineers • Surveyors • Planners • Scientists 5500 New Albany Road, Columbus, OH 43054 Phone: 614.775.4500 Toll Free: 888.775.3648 emht.com</p>	Date: February 2, 2018	
	Scale: 1" = 200'	
	Job No: 2017-0914	
	Sheet: 1 of 1	
REVISIONS		
MARK	DATE	DESCRIPTION