

SURVEY OF ACREAGE PARCEL

QUARTER TOWNSHIP 3, TOWNSHIP 2, RANGE 16

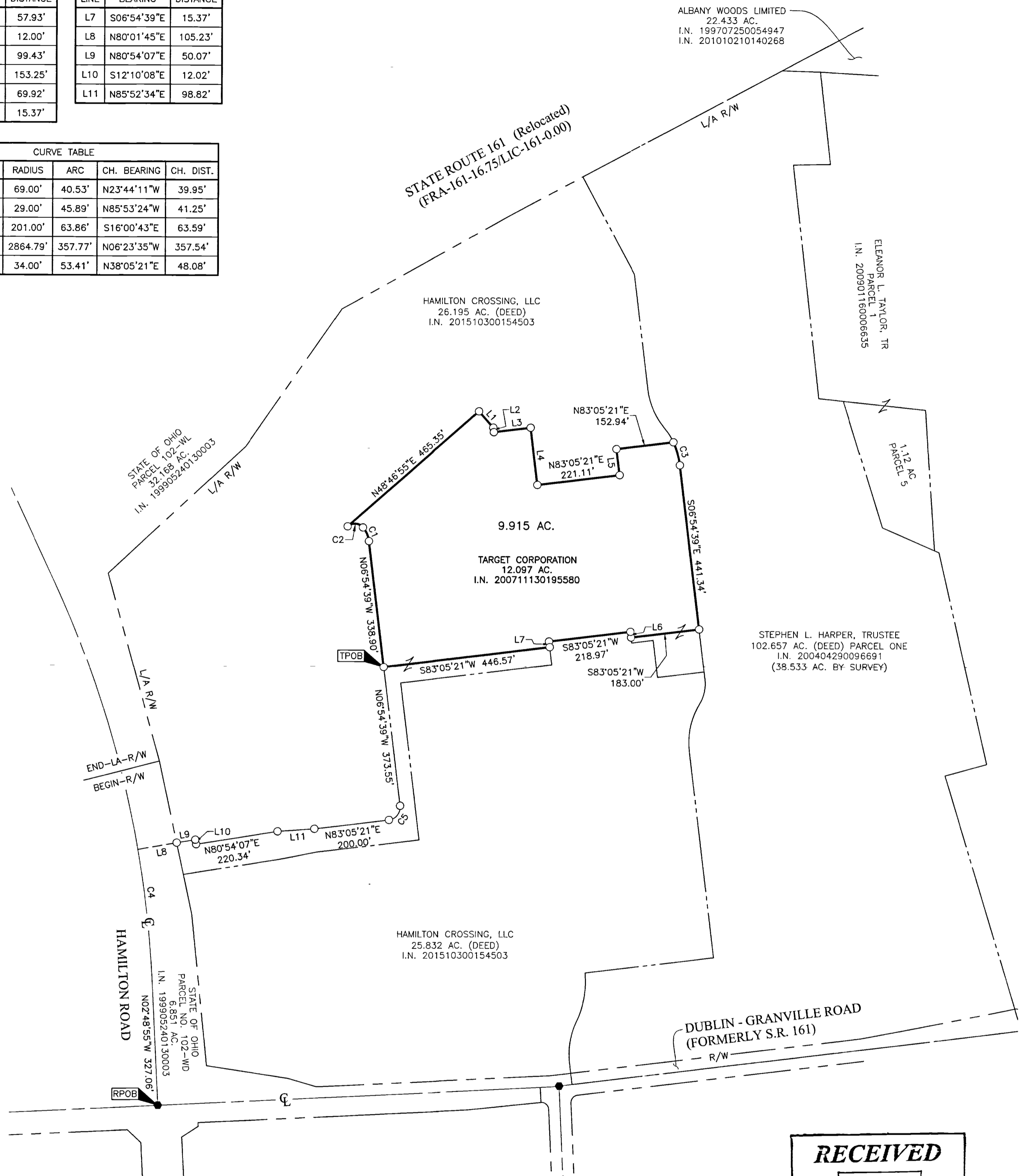
UNITED STATES MILITARY LANDS

CITY OF COLUMBUS, COUNTY OF FRANKLIN, STATE OF OHIO

LINE	BEARING	DISTANCE
L1	S41°13'05"E	57.93'
L2	S06°54'39"E	12.00'
L3	N83°05'21"E	99.43'
L4	S06°54'39"E	153.25'
L5	N06°54'39"W	69.92'
L6	N06°54'39"W	15.37'

LINE	BEARING	DISTANCE
L7	S06°54'39"E	15.37'
L8	N80°01'45"E	105.23'
L9	N80°54'07"E	50.07'
L10	S12°10'08"E	12.02'
L11	N85°52'34"E	98.82'

CURVE	DELTA	RADIUS	ARC	CH. BEARING	CH. DIST.
C1	33°39'04"	69.00'	40.53'	N23°44'11"W	39.95'
C2	90°39'21"	29.00'	45.89'	N85°53'24"W	41.25'
C3	18°12'08"	201.00'	63.86'	S16°00'43"E	63.59'
C4	7°09'20"	2864.79'	357.77'	N06°23'35"W	357.54'
C5	90°00'00"	34.00'	53.41'	N38°05'21"E	48.08'



ALBANY WOODS LIMITED
22.433 AC.
I.N. 199707250054947
I.N. 201010210140268

HAMILTON CROSSING, LLC
26.195 AC. (DEED)
I.N. 201510300154503

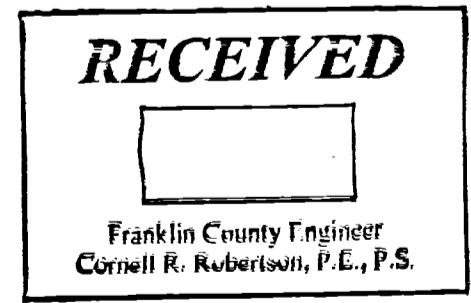
ELEANOR L. TAYLOR, TR
PARCEL 1
I.N. 200901160006635

9.915 AC.
TARGET CORPORATION
12.097 AC.
I.N. 200711130195580

STEPHEN L. HARPER, TRUSTEE
102.657 AC. (DEED) PARCEL ONE
I.N. 200404290096691
(38.533 AC. BY SURVEY)

HAMILTON CROSSING, LLC
25.832 AC. (DEED)
I.N. 201510300154503

DUBLIN - GRANVILLE ROAD
(FORMERLY S.R. 161)
R/W



BASIS OF BEARINGS:
Bearings are based on the Ohio State Plane Coordinate System, South Zone, as per NAD83 (2007 Adjustment). Control for bearings was from coordinates of monuments FCGS 8815 & FCGS 8816, having a bearing of North 03° 23' 04" East for a portion of the centerline of Hamilton Road (Relocated), established by the Franklin County Engineering Department, using Global Positioning System procedures and equipment.

SURVEY NOTE:
This survey was prepared using documents of record, prior plats of survey, and observed evidence located by an actual field survey.

- = STONE FND.
- = MON. FND.
- = I.P. FND.
- = I.P. SET
- = MAG. NAIL FND.
- = MAG. NAIL SET
- ▲ = R.R. SPK. FND.
- △ = R.R. SPK. SET
- = P.K. NAIL FND.

I.P. Set are 13/16" I.D. iron pipes 30" long with cap inscribed EMHT INC.

GRAPHIC SCALE (in feet)

By *Heather L. King* 2/16/18
Heather L. King Professional Surveyor No. 8307 Date

<p>Evans, Mechwart, Hambleton & Tilton, Inc. Engineers • Surveyors • Planners • Scientists 5500 New Albany Road, Columbus, OH 43054 Phone: 614.775.4500 Toll Free: 888.775.3648 emht.com</p>	Date: February 2, 2018
	Scale: 1" = 200'
	Job No: 2017-0914
	Sheet: 1 of 1
REVISIONS	
MARK	DATE DESCRIPTION

J:\20170914\DWG\CASHIETS\BOUNDARY\20170914-VS-BNDY-02.DWG plotted by KING, HEATHER on 2/5/2018 4:20:32 PM last saved by HEATHER on 2/5/2018 4:20:30 PM