

SURVEY OF ACREAGE PARCEL

QUARTER TOWNSHIP 3, TOWNSHIP 2, RANGE 16

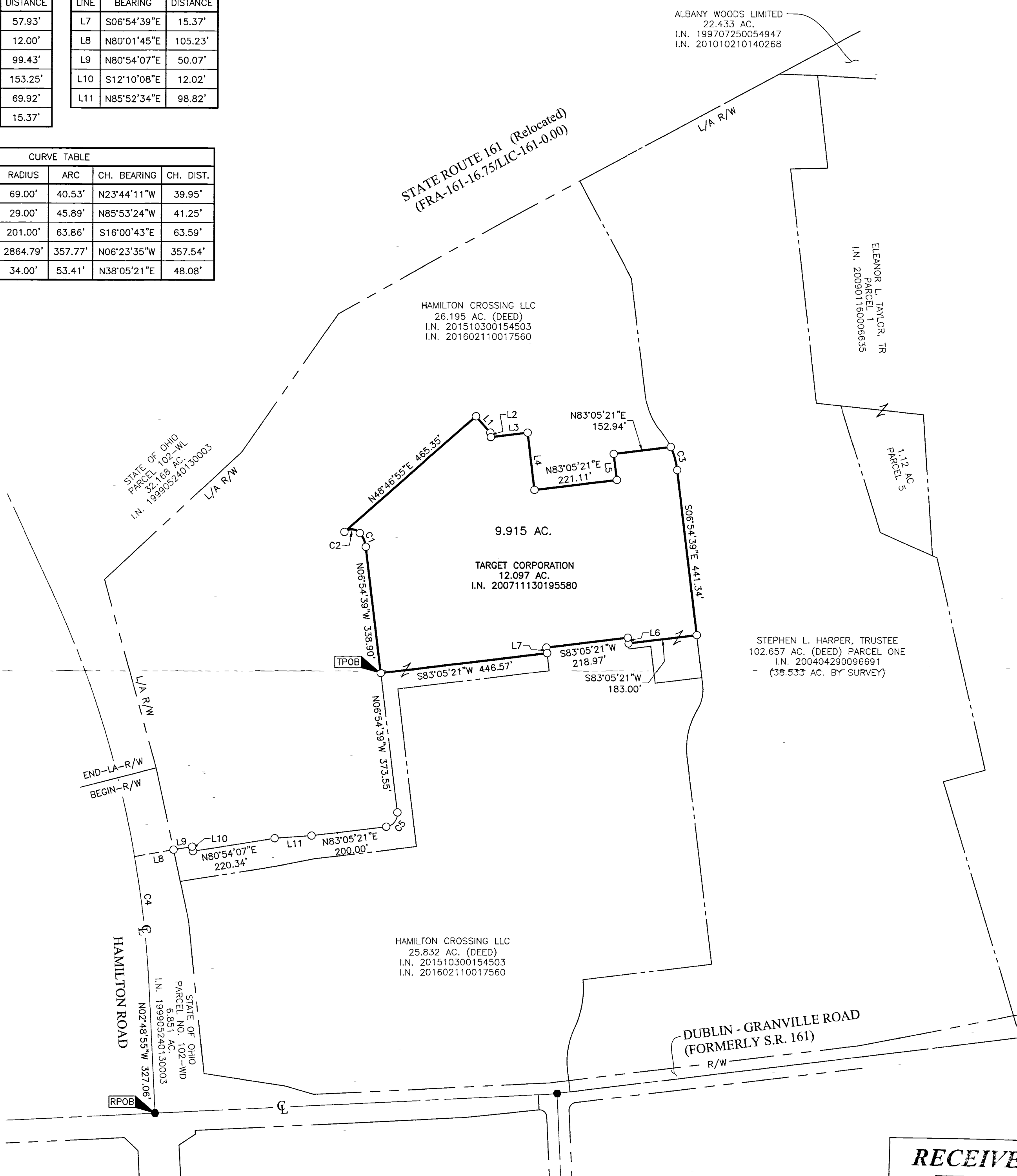
UNITED STATES MILITARY LANDS

CITY OF COLUMBUS, COUNTY OF FRANKLIN, STATE OF OHIO

LINE	BEARING	DISTANCE
L1	S41°13'05"E	57.93'
L2	S06°54'39"E	12.00'
L3	N83°05'21"E	99.43'
L4	S06°54'39"E	153.25'
L5	N06°54'39"W	69.92'
L6	N06°54'39"W	15.37'

LINE	BEARING	DISTANCE
L7	S06°54'39"E	15.37'
L8	N80°01'45"E	105.23'
L9	N80°54'07"E	50.07'
L10	S12°10'08"E	12.02'
L11	N85°52'34"E	98.82'

CURVE	DELTA	RADIUS	ARC	CH. BEARING	CH. DIST.
C1	33°39'04"	69.00'	40.53'	N23°44'11"W	39.95'
C2	90°39'21"	29.00'	45.89'	N85°53'24"W	41.25'
C3	18°12'08"	201.00'	63.86'	S16°00'43"E	63.59'
C4	7°09'20"	2864.79'	357.77'	N06°23'35"W	357.54'
C5	90°00'00"	34.00'	53.41'	N38°05'21"E	48.08'



ALBANY WOODS LIMITED
22.433 AC.
I.N. 199707250054947
I.N. 201010210140268

ELEANOR L. TAYLOR, TR
PARCEL 1
I.N. 200901160006635

HAMILTON CROSSING LLC
26.195 AC. (DEED)
I.N. 201510300154503
I.N. 201602110017560

TARGET CORPORATION
12.097 AC.
I.N. 200711130195580

STEPHEN L. HARPER, TRUSTEE
102.657 AC. (DEED) PARCEL ONE
I.N. 200404290096691
(38.533 AC. BY SURVEY)

HAMILTON CROSSING LLC
25.832 AC. (DEED)
I.N. 201510300154503
I.N. 201602110017560

STATE OF OHIO
PARCEL 102-WD
32.68 AC.
I.N. 199905240130003

STATE OF OHIO
PARCEL NO. 102-WD
6.851 AC.
I.N. 199905240130003

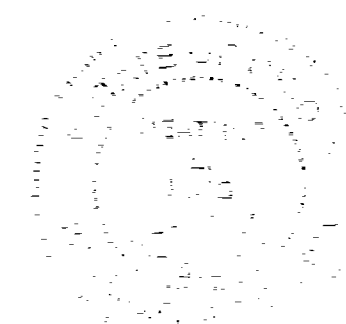
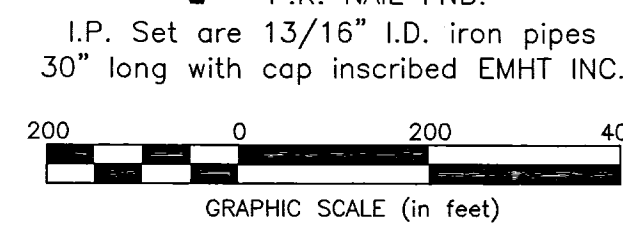
RECEIVED

Franklin County Engineer
Cornell R. Robertson, P.E., P.S.

BASIS OF BEARINGS:
Bearings are based on the Ohio State Plane Coordinate System, South Zone, as per NAD83 (2007 Adjustment). Control for bearings was from coordinates of monuments FCGS 8815 & FCGS 8816, having a bearing of North 03° 23' 04" East for a portion of the centerline of Hamilton Road (Relocated), established by the Franklin County Engineering Department, using Global Positioning System procedures and equipment.

SURVEY NOTE:
This survey was prepared using documents of record, prior plats of survey, and observed evidence located by an actual field survey.

- = STONE FND.
- = MON. FND.
- = I.P. FND.
- = I.P. SET
- = MAG. NAIL FND.
- = MAG. NAIL SET
- ▲ = R.R. SPK. FND.
- △ = R.R. SPK. SET
- = P.K. NAIL FND.



By *Heather L. King* 2/9/18
Heather L. King
Professional Surveyor No. 8307
Date

EMHT		Date: February 2, 2018
Evans, Mechwart, Hambleton & Tilton, Inc. Engineers • Surveyors • Planners • Scientists 5500 New Albany Road, Columbus, OH 43054 Phone: 614.775.4500 Toll Free: 888.775.3648 emht.com		Scale: 1" = 200'
		Job No: 2017-0914
		Sheet: 1 of 1
REVISIONS		
MARK	DATE	DESCRIPTION
HLK	2/9/18	Corrected Hamilton Crossing LLC reference

J:\20170914\DWG\DRY\BOUNDARY\20170914-VS-BNDY-02.DWG plotted by KING, HEATHER on 2/9/2018 4:34:40 PM HWK on 2/9/2018 4:34:52 PM last saved by KING, HEATHER on 2/9/2018 4:34:52 PM