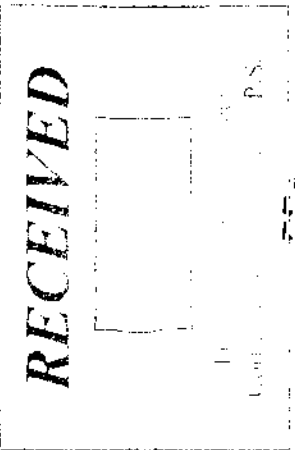


Z:\17-0003-768\DWG\PROD\CAD\DRAWINGS\SURVEY\0003-768-0.019 ac r/w stop.dwg Layout1 Feb 27 2018 12:04:27pm abckham

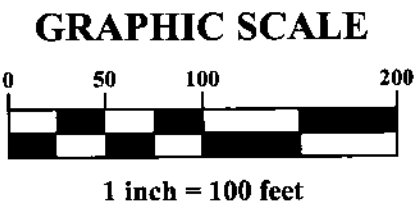
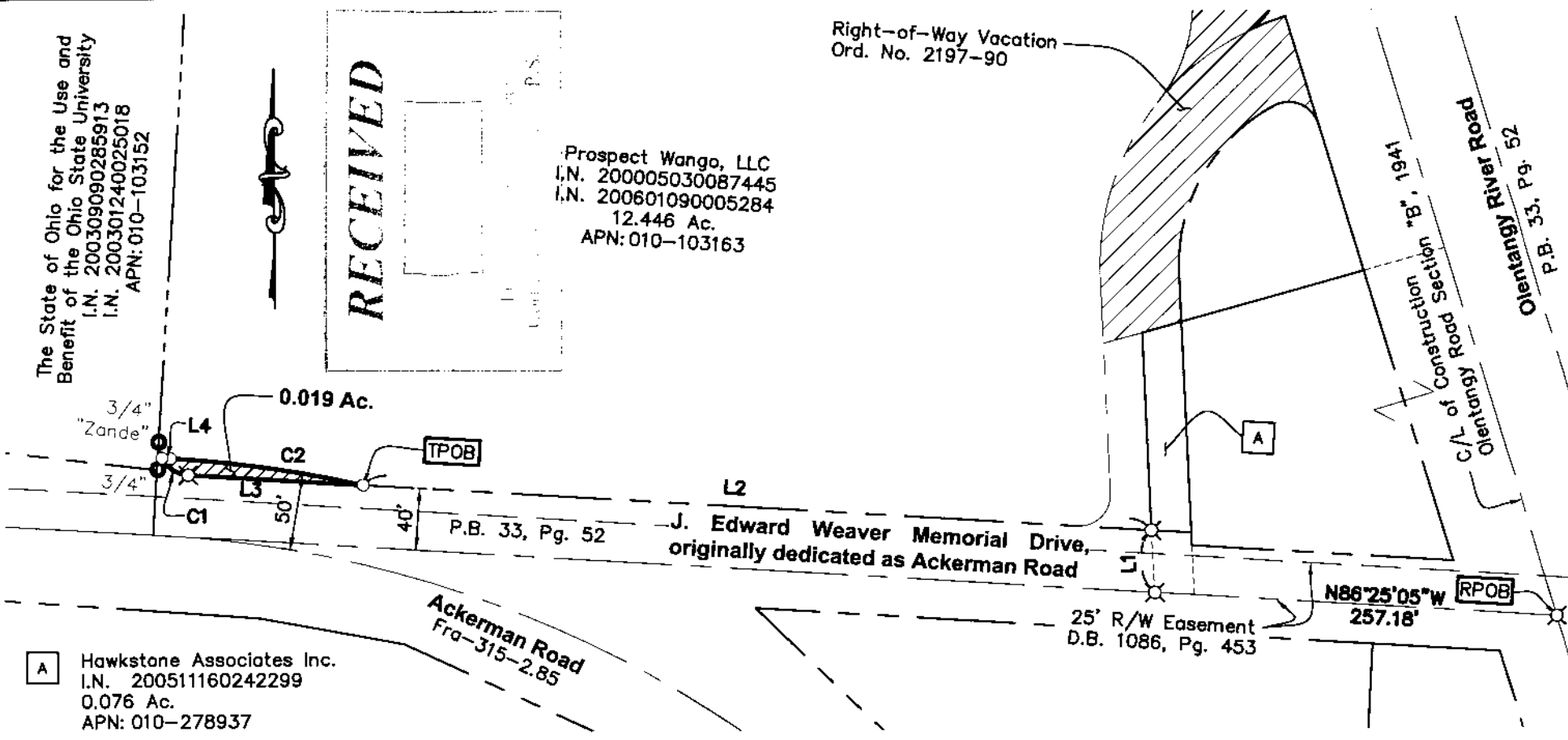
The State of Ohio for the Use and Benefit of the Ohio State University
 I.N. 200309090285913
 I.N. 200301240025018
 APN: 010-103152



Prospect Wango, LLC
 I.N. 200005030087445
 I.N. 200601090005284
 12.446 Ac.
 APN: 010-103163

Right-of-Way Vacation
 Ord. No. 2197-90

PARCEL EXHIBIT
0.019 ACRES
 Situated in the State of Ohio,
 City of Columbus,
 Franklin County, Ohio,
 Range 18, Township 1,
 Quarter Township 3,
 United States Military District



A Hawkstone Associates Inc.
 I.N. 200511160242299
 0.076 Ac.
 APN: 010-278937

This exhibit is created from information obtained from the Franklin County Auditor's Office and the Franklin County Recorder's Office and information obtained from an actual field survey conducted in February of 2017.

All iron pins set are 3/4" diameter, 30" long with plastic cap inscribed "Advanced 7661".

The Basis of Bearings used in this description are based upon the NAD83 Ohio State Plane Coordinate System, South Zone (NSRS 2007) which determines the bearing for the westerly right-of-way line for Olentangy River Road to be S16°43'11"E.

ADVANCED CIVIL DESIGN, INC.

CURVE TABLE					
NO.	DELTA	RADIUS	LENGTH	CHORD BEARING	CHORD DIST.
C1	060°01'10"	20.00'	20.95'	N56°24'57"W	20.01'
C2	009°16'07"	766.20'	123.95'	S81°47'02"E	123.81'

LINE TABLE		
LINE	BEARING	DISTANCE
L1	N02°53'04"W	40.27'
L2	N86°25'05"W	502.08'
L3	N86°25'05"W	111.45'
L4	S86°25'05"E	5.37'

- Legend**
- Iron Pipe Found
 - ⊗ PK Nail Set
 - Iron Pin Set

Douglas R. Hock
 Douglas R. Hock, P.S. 7661
 Date: 2/27/18

DRAWN BY: DRB	JOB NO.: 17-0003-768
DATE: 02/20/2018	CHECKED BY: BCK
 ADVANCED CIVIL DESIGN ENGINEERS SURVEYORS	
422 Beecher Road Gahanna, Ohio 43230 ph 614.428.7750 fax 614.428.7755	