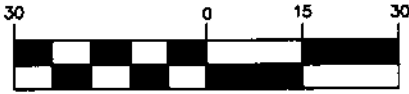


Parcel Exhibit
0.239 Ac.

City of Dublin,
Franklin County, Ohio
Virginia Military
Survey No. 6953

GRAPHIC SCALE



(IN FEET)
1 inch = 30 ft.



BALLANTRAE WOODS
RESERVE "F"
Open Space 3.065 AC.
P.B. 121, P. 79

S5°02'35"E 74.66'

N84°57'25"E 98.92'

FUTURE B-83

0.239 Ac.
B-82

S83°49'54"W 124.75'

S29°01'53"E 68.87'

Δ=14°04'22"
R=57.50'
ArcL=14.12'
ChB=N45°12'35"E
ChD=14.09'

TPOB

N37°45'14"W
24.10'

Δ=32°42'39"
R=57.50'
ArcL=32.83'
ChB=N68°36'06"E
ChD=32.38'

FUTURE B-81

N5°02'35"W 110.74'

INCHCAPE LANE (PRIVATE)
RESERVE "G" P.B. 121, P. 79

N84°57'25"E 91.73'

BALLANTRAE WOODS
RESERVE "O"
1.894 AC.
P.B. 121, P. 79
FUTURE B-80

City of Dublin Approval Not Required

C. Aaron Stanford
C. Aaron Stanford, P.E.
Senior Civil Engineer

3/22/18

Δ=3°50'46"
R=378.50'
ArcL=25.41'
ChB=N83°02'02"E
ChD=25.40'

RPOB

BALLANTRAE WOODS
RESERVE "R"
0.114 AC. (Open Space)
P.B. 121, P. 79

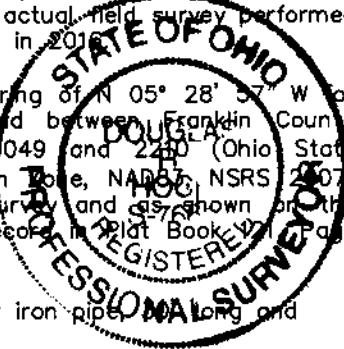
Ida M. Cramers & Others
Amended Plat and Addition to
the Village of Amlin
P.B. 18, P. 12A

ALLEY 15'

This exhibit is based on existing Franklin County Auditor's and Recorder's records and an actual field survey performed by American Structurepoint, Inc. in 2016.

Bearings are based on the bearing of N 05° 28' 37" W for the centerline of Cosgray Road between Franklin County Geodetic Survey monuments 0049 and 240 (Ohio State Plane Coordinate System, South Zone, NAD83, NSRS 2007) as established using a GPS survey and as shown on the plat for Ballantrae Woods of record in Plat Book 121, Page 79.

Iron pins set are 3/4" diameter iron pipes 10" long and capped Advanced 7661.



Douglas R. Hock

3/23/18

Douglas R. Hock, P.S. 7661

Date:

LEGEND

- I.P. Found
- Iron Pin Set

DRAWN BY: *BCK* JOB NO.: 17-0005-606

DATE: 8/30/2017 CHECKED BY: *DRB*

ADVANCED
CIVIL DESIGN
ENGINEERS-SURVEYORS

422 Beecher Road
Gahanna, Ohio 43230
ph 614.428.7750
fax 614.428.7755