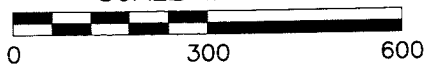


NORTH
SCALE IN FEET



LEGEND

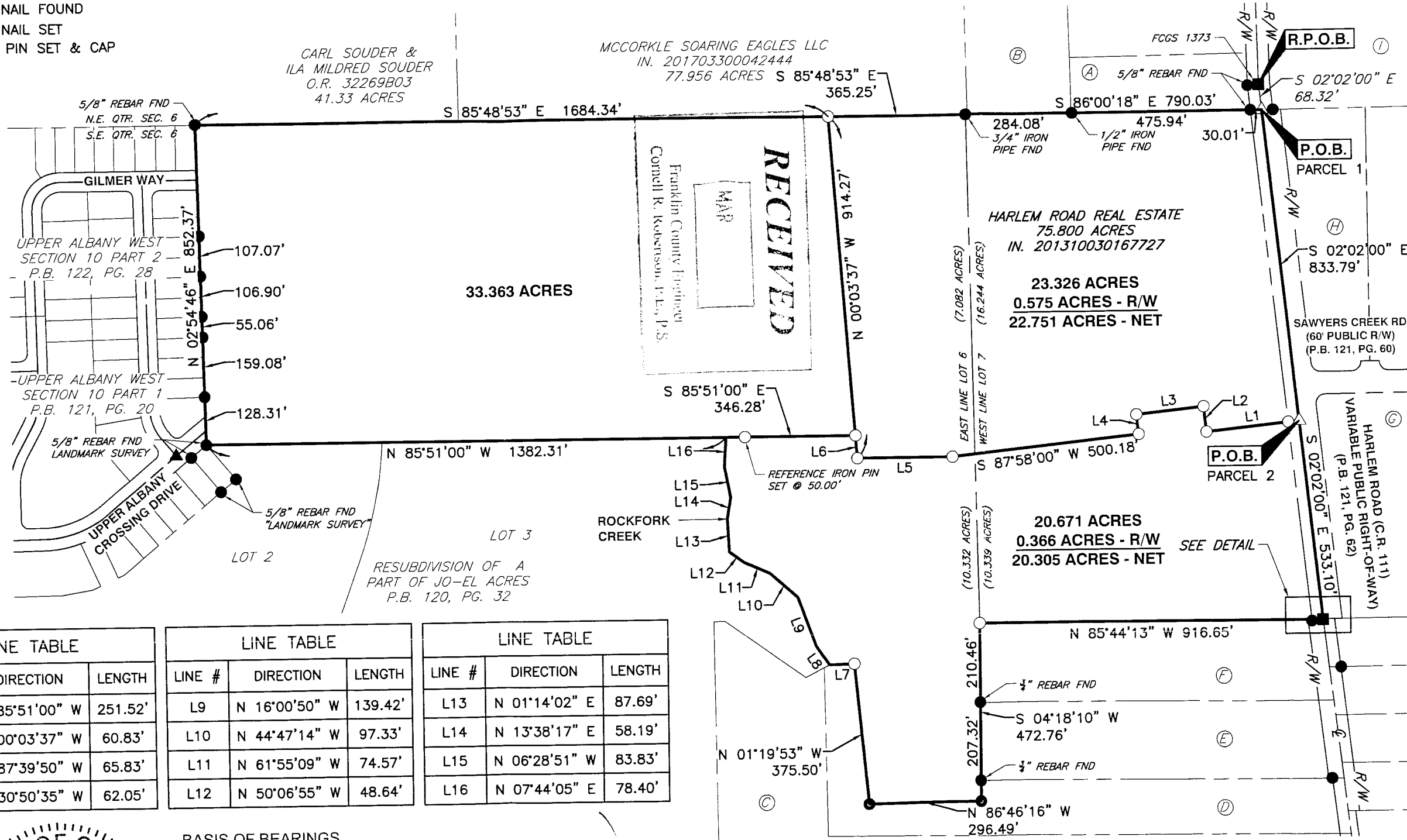
- PIN FD. 5/8" "LANDMARK SURVEY"
(UNLESS OTHERWISE STATED)
- COUNTY MONUMENT FOUND
- STONE FOUND
- ▲ MAG NAIL FOUND
- △ MAG NAIL SET
- IRON PIN SET & CAP

PLAT OF SURVEY

STATE OF OHIO, COUNTY OF FRANKLIN, CITY OF COLUMBUS,
LOTS 6 & 7, QUARTER TOWNSHIP 2, TOWNSHIP 2, RANGE 16
UNITED STATES MILITARY LANDS

DETAIL SCALE: 1"=20'

- A: MALLIKHA SAMUEL
IN. 201008260110099
1.67 ACRES
- B: HARLEM ROAD REAL ESTATE, LLC
IN. 201310030167725
6.727 ACRES
- C: MELINDA L. MURPHY & RONALD L. MURPHY
D.B. 3672, PG. 665
5.619 ACRES
- D: VINCENT E. GOLDEN & KAREN S. GOLDEN
O.R. 06405D06
5.068 ACRES
- E: DAVID J. DURITSKY
IN. 201512280180584
4.548 ACRES
- F: NORMAN SINGER & LOIS SINGER
IN. 200601100006680
4.548 ACRES
- G: EMERSON PARK LLC
IN. 201608290114420
29.433 ACRES
- H: PRESTON HOLLOW SECTION 1
P.B. 123, PG. 040
- I: JORGENSEN FARMS LLC
IN. 201602290023926
35.238 ACRES



LINE TABLE		
LINE #	DIRECTION	LENGTH
L1	S 87°58'00" W	250.00'
L2	N 02°02'00" W	68.50'
L3	S 87°58'00" W	180.00'
L4	S 02°02'00" E	53.00'

LINE TABLE		
LINE #	DIRECTION	LENGTH
L5	N 85°51'00" W	251.52'
L6	N 00°03'37" W	60.83'
L7	N 87°39'50" W	65.83'
L8	N 30°50'35" W	62.05'

LINE TABLE		
LINE #	DIRECTION	LENGTH
L9	N 16°00'50" W	139.42'
L10	N 44°47'14" W	97.33'
L11	N 61°55'09" W	74.57'
L12	N 50°06'55" W	48.64'

LINE TABLE		
LINE #	DIRECTION	LENGTH
L13	N 01°14'02" E	87.69'
L14	N 13°38'17" E	58.19'
L15	N 06°28'51" W	83.83'
L16	N 07°44'05" E	78.40'

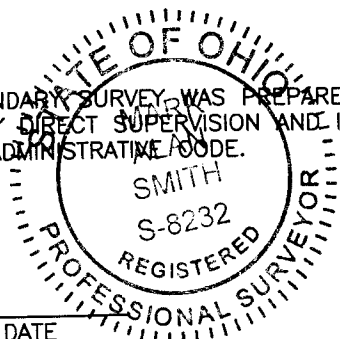
BASIS OF BEARINGS

THE BEARINGS SHOWN ON THIS SURVEY ARE BASED ON THE BEARING OF SOUTH 02°02'00" EAST, FOR THE CENTERLINE OF HARLEM ROAD, OCCUPYING FGS 1373 & FGS 1375, AS DETERMINED BY GPS OBSERVATIONS AND POST PROCESSED UTILIZING NGS OPUS SOLUTION.

IRON PINS


ALL IRON PINS SET ARE 5/8" SOLID REBAR, THIRTY INCHES IN LENGTH WITH YELLOW PLASTIC CAP BEARING THE INITIALS "CEC INC."

I HEREBY CERTIFY THAT THE FOREGOING BOUNDARY SURVEY WAS PREPARED WITH ACTUAL FIELD MEASUREMENTS UNDER MY DIRECT SUPERVISION AND IN ACCORDANCE WITH CHAPTER 4733-37 OHIO ADMINISTRATIVE CODE.



MARK ALAN SMITH
REGISTERED SURVEYOR NO. S-8232

DATE



Civil & Environmental Consultants, Inc.
250 Old Wilson Bridge Road · Suite 250 · Worthington, OH 43085
614-540-6633 · 888-598-6808
www.cecinc.com

33.363 ACRES
22.751 ACRES
20.305 ACRES

CITY OF COLUMBUS
FRANKLIN COUNTY, OHIO

DRAWN BY: JEC	CHECKED BY: MAS	APPROVED BY: MAS	DRAWING NO.: SRV
DATE: FEBRUARY 2018	DWG SCALE: 1"=300'	PROJECT NO: 163-228	

P:\2016\163-228\Survey\DWG\163228XR-SV01-SRV (43.9974C).dwg[LAYOUT] LS:(2/27/2018 - jecfin) - LP: 2/27/2018 2:32 PM