

RECEIVED

Franklin County Engineering Department
Cohen R. Roberts, P.E., P.S.



Evans, Mechwart, Hambleton & Tilton, Inc.
Engineers • Surveyors • Planners • Scientists
5500 New Albany Road, Columbus, OH 43054
Phone: 614.775.4500 Toll Free: 888.775.3448
emht.com

SURVEY OF ACREAGE PARCEL

QUARTER TOWNSHIP 2, TOWNSHIP 2, RANGE 17

UNITED STATES MILITARY LANDS

CITY OF WESTERVILLE, COUNTY OF FRANKLIN, STATE OF OHIO

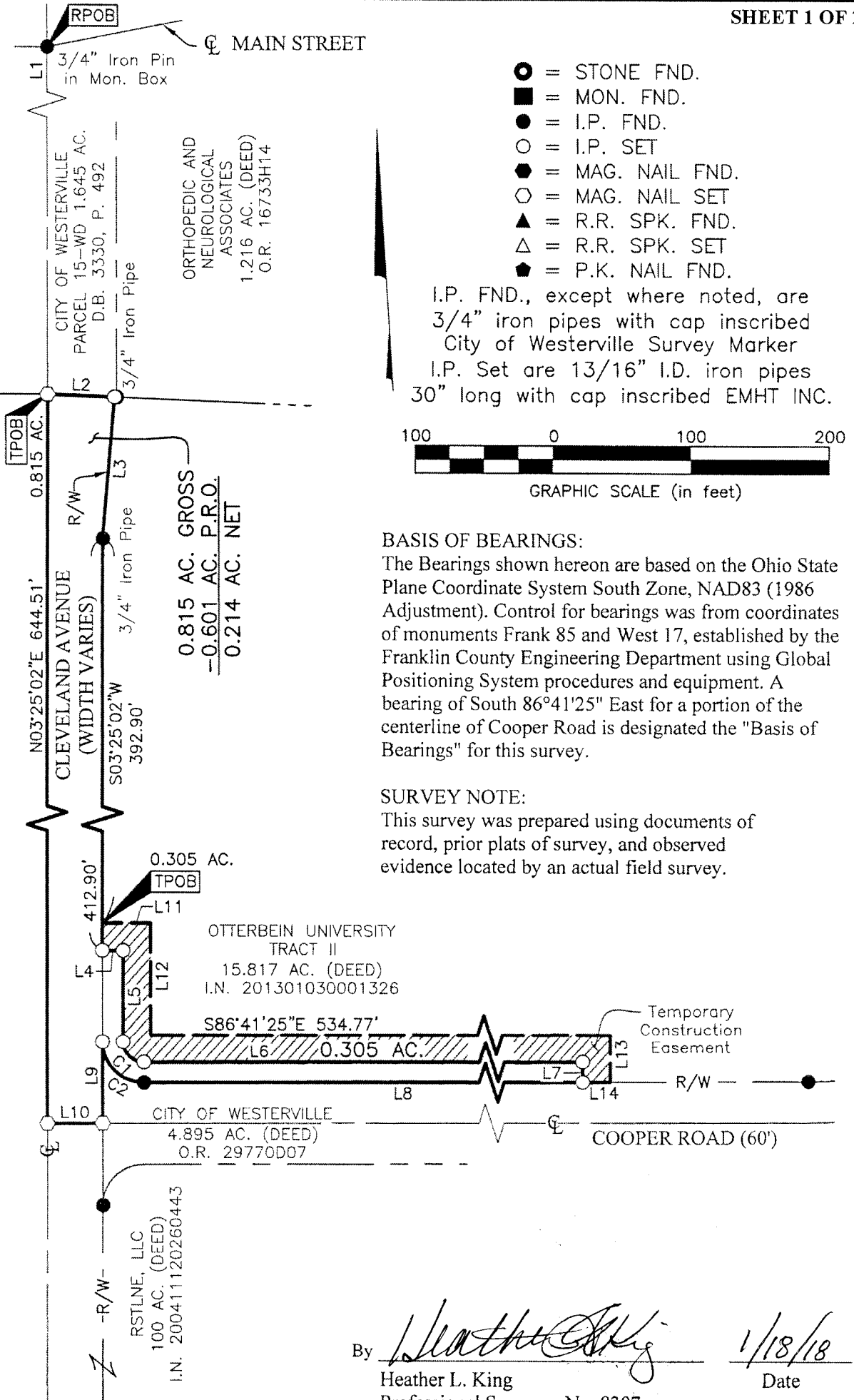
Date: January 9, 2018

Job No: 2017-0031

Scale: 1" = 100'

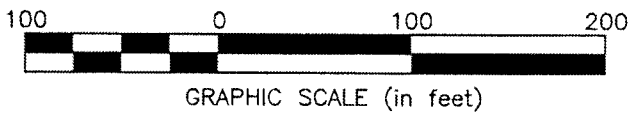
SHEET 1 OF 2

J:\20170031\DWG\CLEVELAND COOPER ROW\04SHEETS\20170031-VS-BNDY-CLEV-02.DWG plotted by KING, HEATHER on 1/11/2018 4:44:17 PM last saved by KING on 1/11/2018 4:43:28 PM
Xrefs:



- = STONE FND.
- = MON. FND.
- = I.P. FND.
- = I.P. SET
- = MAG. NAIL FND.
- = MAG. NAIL SET
- ▲ = R.R. SPK. FND.
- △ = R.R. SPK. SET
- ◆ = P.K. NAIL FND.

I.P. FND., except where noted, are 3/4" iron pipes with cap inscribed City of Westerville Survey Marker
I.P. Set are 13/16" I.D. iron pipes 30" long with cap inscribed EMHT INC.



BASIS OF BEARINGS:

The Bearings shown hereon are based on the Ohio State Plane Coordinate System South Zone, NAD83 (1986 Adjustment). Control for bearings was from coordinates of monuments Frank 85 and West 17, established by the Franklin County Engineering Department using Global Positioning System procedures and equipment. A bearing of South $86^{\circ}41'25''$ East for a portion of the centerline of Cooper Road is designated the "Basis of Bearings" for this survey.

SURVEY NOTE:

This survey was prepared using documents of record, prior plats of survey, and observed evidence located by an actual field survey.

By Heather L. King 1/18/18
Heather L. King Date
Professional Surveyor No. 8307



Evans, Mechwart, Hambleton & Tilton, Inc.
 Engineers • Surveyors • Planners • Scientists
 5500 New Albany Road, Columbus, OH 43054
 Phone: 614.775.4500 Tol Free: 888.775.3648
 emht.com

SURVEY OF ACREAGE PARCEL

QUARTER TOWNSHIP 2, TOWNSHIP 2, RANGE 17

UNITED STATES MILITARY LANDS

CITY OF WESTERVILLE, COUNTY OF FRANKLIN, STATE OF OHIO

Date: January 4, 2018

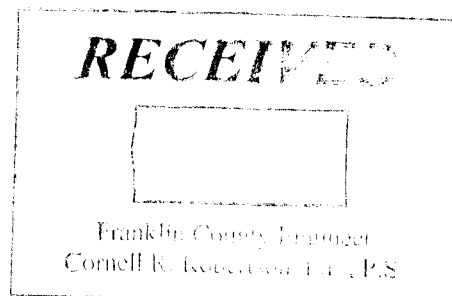
Job No: 2017-0031

Scale: 1" = 100'

SHEET 2 OF 2

LINE TABLE		
LINE	BEARING	DISTANCE
L1	S03°25'02"W	772.30'
L2	S84°07'19"E	48.36'
L3	S08°01'42"W	103.41'
L4	S86°34'42"E	15.00'
L5	S03°25'02"W	66.33'
L6	S86°41'25"E	519.77'
L7	S03°18'35"W	15.00'
L8	N86°41'25"W	519.77'
L9	S03°25'02"W	60.06'
L10	N86°41'25"W	40.00'
L11	S86°34'42"E	35.00'
L12	S03°25'02"W	81.32'
L13	S03°18'35"W	35.00'
L14	N86°41'25"W	20.00'
L15	N03°25'02"E	20.00'

CURVE TABLE					
CURVE	DELTA	RADIUS	ARC	CH. BEARING	CH. DIST.
C1	90°06'28"	15.00'	23.59'	S41°38'11"E	21.23'
C2	90°06'28"	30.00'	47.18'	N41°38'11"W	42.47'



J:\20170031\DWG\CLEVELAND COOPER ROW\04SHEETS\20170031-VS-BNDY-CLEV-02.DWG plotted by WEBB, TEAGUE on 1/9/2018 11:37:51 AM last saved by WEBB, TEAGUE on 1/9/2018 11:37:06 AM
 Xrefs: