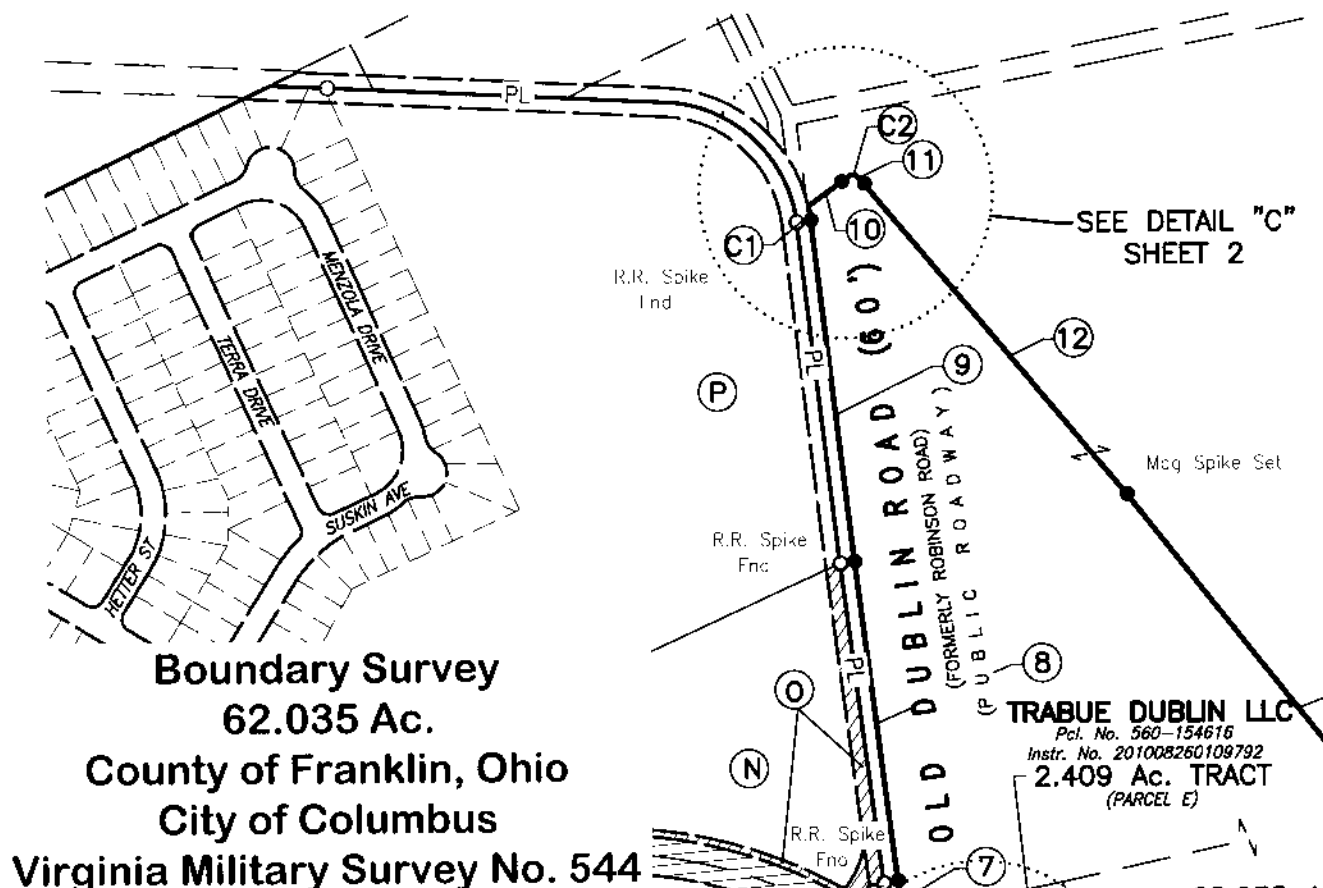


CURVE TABLE					
NO.	LENGTH	RADIUS	DELTA	CHORD	CHORD BEARING
C1	29.91'	317.94'	05°23'25"	29.90'	N09°39'21"W
C2	22.24'	15.00'	84°57'00"	20.26'	S83°57'13"E
C3	447.01'	522.50'	49°01'03"	433.50'	S62°53'30"E
C4	102.58'	477.50'	12°18'32"	102.38'	S81°14'46"E
C5	117.22'	527.50'	12°43'55"	116.98'	N43°31'08"W
C6	51.64'	477.50'	06°11'45"	51.61'	S48°48'18"E

LINE TABLE		
LINE	LENGTH	BEARING
1	1639.43'	N48°06'00"W
2	40.00'	N41°54'00"E
3	80.00'	N48°06'00"W
4	40.00'	S41°54'00"W
5	189.11'	N48°06'00"W
6	68.98'	N15°09'50"W
7	75.36'	N07°11'45"W
8	672.05'	N07°25'42"W
9	718.49'	N06°53'16"W
10	104.10'	N53°34'16"E
11	17.98'	S41°28'43"E
12	846.43'	S39°40'37"E
13	861.06'	S38°22'59"E
14	46.57'	S15°31'14"E
15	90.98'	S77°41'44"E
16	129.28'	S25°12'38"E
17	90.16'	S27°16'06"W
18	306.12'	S63°54'23"E

19	195.89'	S80°00'25"E
20	154.01'	N75°31'21"E
21	53.97'	S66°17'48"E
22	161.16'	N58°37'36"E
23	263.36'	N12°01'06"E
24	131.24'	N17°20'07"W
25	133.83'	N51°15'44"W
26	82.09'	N35°44'52"W
27	64.33'	N00°18'40"E
28	165.95'	N17°04'34"W
29	115.60'	N79°32'41"E
30	294.89'	S15°00'01"E
31	426.03'	S24°19'34"E
32	147.37'	S35°13'10"E
33	223.38'	S52°17'21"W
34	53.03'	S58°36'08"W
35	138.41'	S54°01'09"W
36	391.86'	S45°29'55"W
37	114.42'	S04°18'16"E
38	538.63'	S58°07'36"W
39	177.55'	S48°12'58"W



TRABUE DUBLIN, LLC
Pcl. No. 560-154643
Instr. No. 201008260109792
80 Ac. PARCEL
(PARCEL C, TRACT 2)

TRABUE DUBLIN LLC
Pcl. No. 560-154616
Instr. No. 201008260109792
2.409 Ac. TRACT
(PARCEL E)

TRABUE DUBLIN LLC
Pcl. No. 560-154616
Instr. No. 201008260109792
72-3/4 Ac. TRACT
(PARCEL D)

- Legend**
- PL Property Line
 - R/W Right-of-Way
 - Mag Spike set (+ denoted) or Iron Pin Set
 - Iron Pin Found (IPF)
 - (D) Deed or Plat
 - (M) Measured Distance
 - POC Point of Commencement
 - POB Point of Beginning
 - Right of Way Dedication
 - M Franklin County Monument

Scale: 1"=400'

Iron pins set are 5/8" rebar, 30" in length with a yellow plastic cap with "EP FERRIS SURVEYOR 8342" inscribed on top.
Mag spikes set are set in solid rock and are 3' long, 3/8" shaft diameter magnetic spikes with a 1" diameter head with a 2" diameter brass washer with "EP FERRIS SURVEYOR 8342" inscribed on top.
The survey was conducted from 11-01-16 to 11-14-17.

We hereby certify that the foregoing Boundary Survey was prepared from actual field measurements in accordance with Chapter 4733-37 Ohio Administrative Code.

BASIS OF BEARING
The bearings shown on this plat are based on the Ohio State Plane Coordinate System, South Zone, NAD83 (2012A). Control for bearings was from coordinates of monuments FCGS 1638 and FCGS 1527, as established by the Franklin County Engineering Department, using Global Positioning System procedures and equipment, with a bearing of N48°06'00"W for a portion of the centerline of Dublin Road and is designated the "Basis of Bearing" for this plat.

E. P. FERRIS ASSOCIATES
CONTACT:
880 KING AVENUE
COLUMBUS, OHIO 43212
(614) 299-2959
(614) 299-2992 (fax)
www.EPFERRIS.com

STATE OF OHIO
MATTHEW LEE SLOAT
S-8342
REGISTERED PROFESSIONAL SURVEYOR

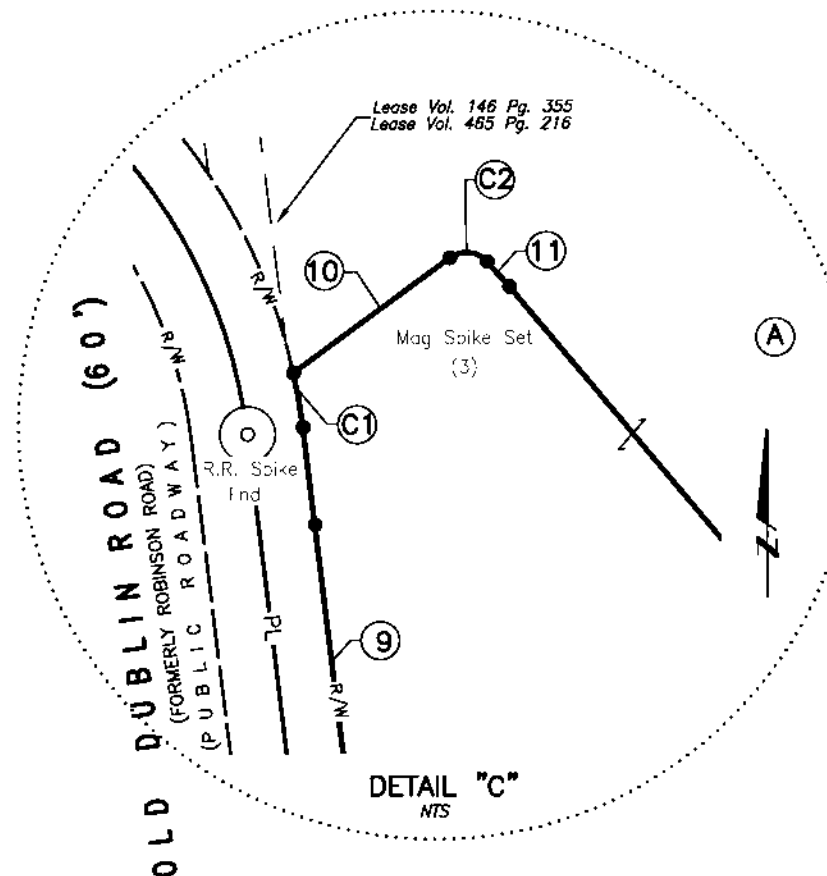
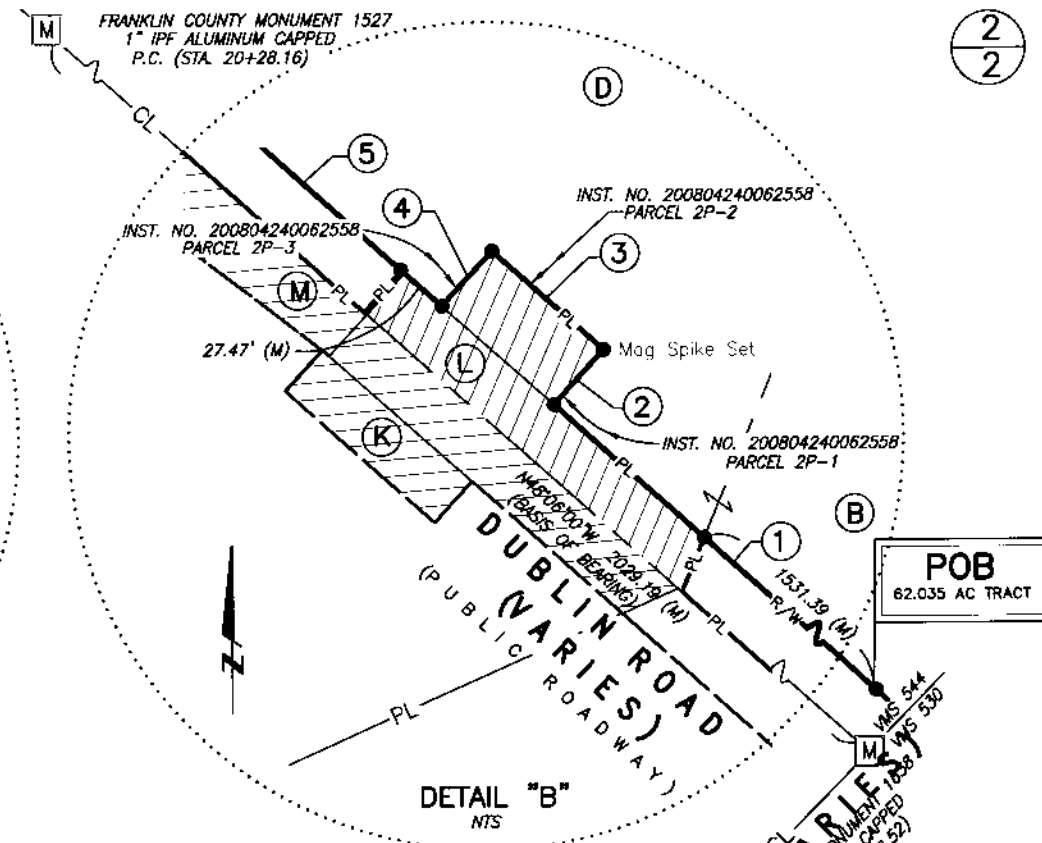
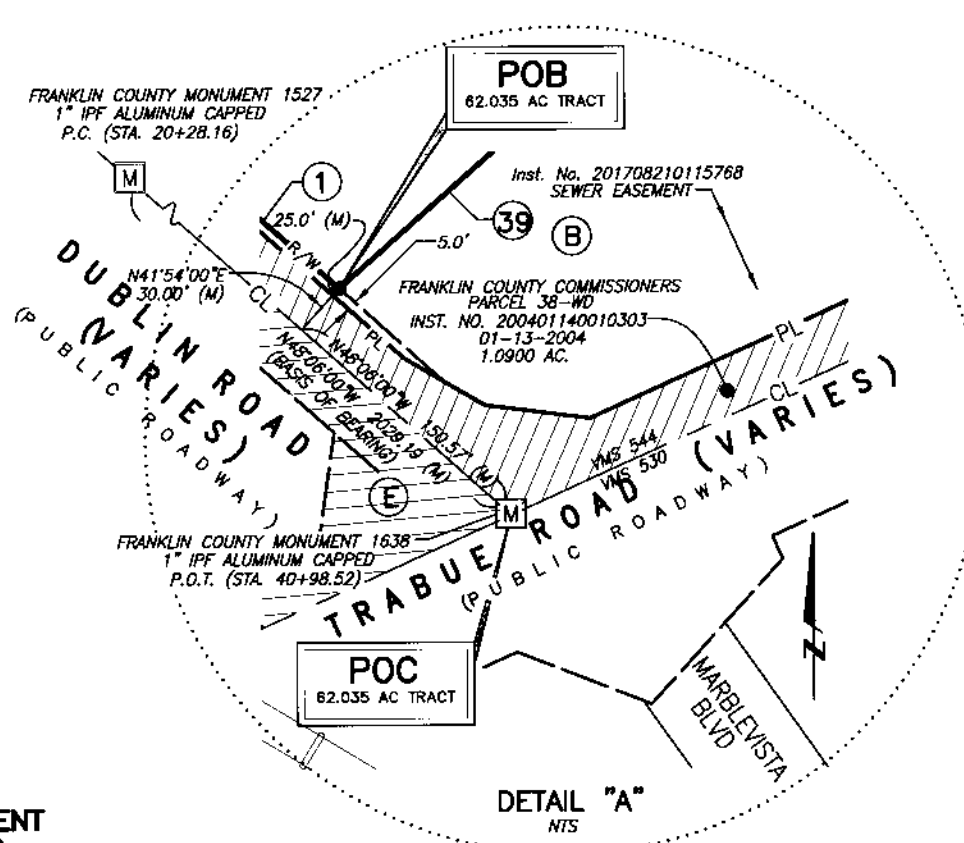
BY: *Matthew Lee Sloat* 12/11/17
Matthew Lee Sloat, P.E., P.S.
Registered Surveyor No. 8342

DRWN BY CRK CHK BY MLS DATE 12-05-17
1005013

OWNERS

- (C) **WAGENBRENNER MARBLE CLIFF CANYON LLC**
Pcl. No. 560-183817
Instr. No. 201702280027548
2.299 Ac. (D)
- (E) **FRANKLIN COUNTY COMMISSIONERS**
Instr. No. 200212200328021
37-WD-2
0.3948 Ac. (D)
- (F) **FRANKLIN COUNTY COMMISSIONERS**
Instr. No. 200308210265908
36-WD
0.2145 AC.
- (G) **DUBLIN ROAD MINI-STORAGE LTD**
ORV. 33880F14
Pcl. No. 560-191404
0.741 AC.
- (H) **DUBLIN ROAD MINI-STORAGE LTD**
ORV. 33880F14
Pcl. No. 560-154611
1.0 AC.
- (I) **FDDM ENTERPRISES LTD**
Pcl. No. 560-154711
Instr. No. 199905210129194
1.432 AC.
- (J) **ALBERT E. STIEGMAN, JR & ELIZABETH ASHBY PLANT**
Pcl. No. 560-215017
Instr. No. 201108300108519
6.411 AC.

- (K) **FRANKLIN COUNTY COMMISSIONERS**
OR. 21964004
1-WD
0.225 Ac. (D)
- (L) **FRANKLIN COUNTY COMMISSIONERS**
OR. 25622J06
COURT OF COMMON PLEAS
CASE NO. 93CVH07-4909
2-WD
0.226 Ac. (D)
- (M) **CITY OF COLUMBUS**
DB. 3517 PG. 859
2.880 Ac (D)
1-WD
- (N) **QUARRY LOFTS PARTNERS LLC**
Pcl. No. 560-211803
Instr. No. 201810280149060
9.078 Ac. (D)
- (O) **CITY OF COLUMBUS**
INST. NO. 201709150129334
0.926 AC.
- (P) **RIVER OAKS APARTMENT MANAGEMENT, LLC**
Pcl. No. 560-239130
Instr. No. 201207020094482
24.336 Ac (D)



RECEIVED

[Stamp]

Franklin County Engineer
Cornell K. Ryan, P.E., P.S.

DRWN BY CRK CHK BY MLS DATE 12-05-17

1005013

E. P. FERRIS AND ASSOCIATES INC
CONTACT: 880 KING AVENUE COLUMBUS, OHIO 43212
(614) 299-2339
(614) 299-2397 (Fax)
www.EPFERRIS.com
Consulting Civil Engineers and Surveyors