



Evans, Mechwart, Hambleton & Tilton, Inc.
 Engineers • Surveyors • Planners • Scientists
 5500 New Albany Road, Columbus, OH 43054
 Phone: 614.775.4500 Toll Free: 888.775.3648
 emht.com

SURVEY OF ACREAGE PARCEL

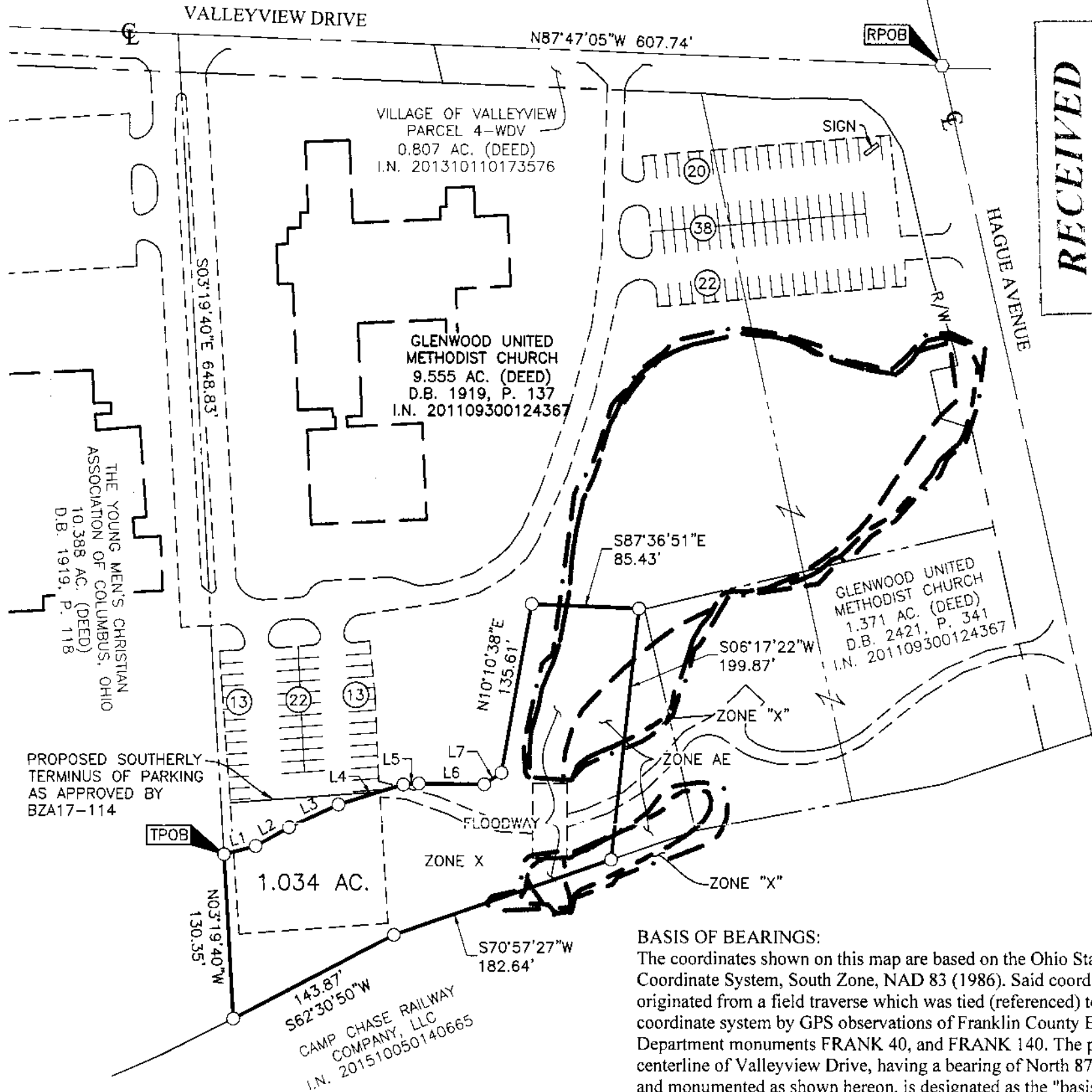
VIRGINIA MILITARY SURVEY NUMBER 1390

CITY OF COLUMBUS, COUNTY OF FRANKLIN, STATE OF OHIO

Date: January 3, 2018

Job No: 2016-1425

Scale: 1" = 100'



RECEIVED

Franklin County Engineer
 Cornell R. Robertson, E.L.P.S.

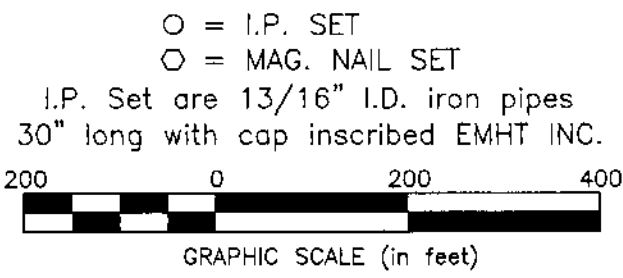
BASIS OF BEARINGS:
 The coordinates shown on this map are based on the Ohio State Plane Coordinate System, South Zone, NAD 83 (1986). Said coordinates originated from a field traverse which was tied (referenced) to said coordinate system by GPS observations of Franklin County Engineering Department monuments FRANK 40, and FRANK 140. The portion of the centerline of Valleyview Drive, having a bearing of North 87° 47' 05" West and monumented as shown hereon, is designated as the "basis of bearing" for this survey.

SURVEY NOTE:
 This survey was prepared using documents of record, prior plats of survey, and observed evidence located by an actual field survey.

FEMA NOTE:
 According to the Federal Emergency Management Agency's Flood Insurance Rate Map No. 39049C0304K (dated June 17, 2008), the subject tract shown hereon lies within Zone AE (Area of 1% annual chance flood with Base Flood Elevations determined), Zone "X" (areas of 0.2% annual chance flood; areas of 1% annual chance flood with average depths of less than 1 foot or with drainage areas less than 1 square mile; and areas protected by levees from 1% annual chance flood) and Zone X (areas determined to be outside of the 0.2% annual chance floodplain).

IMPROVEMENTS NOTE:
 The improvements shown hereon, including building, driveway and parking locations, are based on Franklin County Auditor Geographic Information.

LINE TABLE		
LINE	BEARING	DISTANCE
L1	N75°29'18"E	25.92'
L2	N60°56'06"E	30.36'
L3	N65°04'04"E	43.26'
L4	N73°03'35"E	54.07'
L5	N85°58'06"E	12.48'
L6	S89°12'03"E	51.76'
L7	N55°56'25"E	16.46'



By Heather L. King 1/4/18
 Heather L. King Date
 Professional Surveyor No. 8307

U:\2016\1425\DWG\04SHEETS\BOUNDARY\20161425-VS-BNDY-01.DWG plotted by KING, HEATHER on 1/3/2018 3:29:40 PM last saved by HKING on 1/3/2018 3:28:44 PM Xref: 20161425-CS-BFER-N.DWG