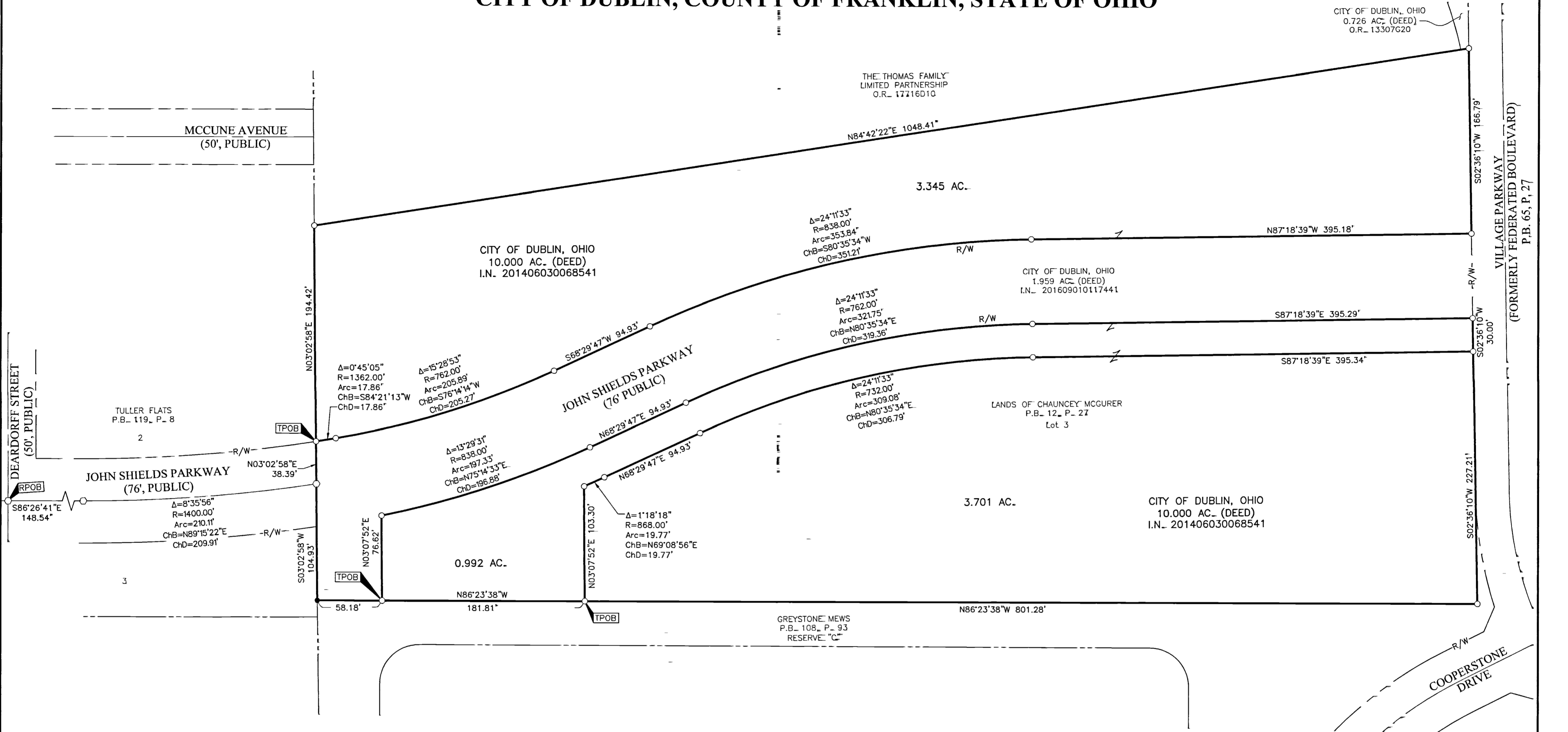


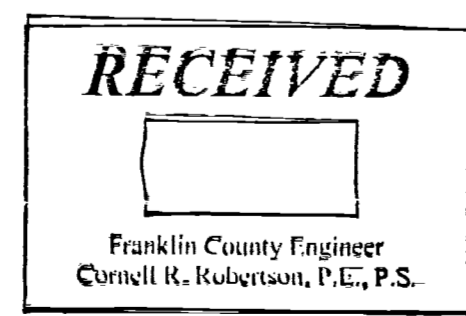
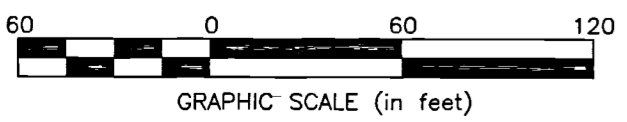
SURVEY OF ACREAGE PARCELS

LOT 16, QUARTER TOWNSHIP 2, TOWNSHIP 2, RANGE 19
 UNITED STATES MILITARY LANDS
 CITY OF DUBLIN, COUNTY OF FRANKLIN, STATE OF OHIO



1/19/2018 12:06:30 PM last saved by KING, HEATHER on 1/19/2018 12:06:17 PM
 A:\2018\105\DWG\SHRETS\BOUNDARY\20180105-VS-BNDY-01.DWG plotted by KING, HEATHER on 1/19/2018 12:06:17 PM

- = STONE_FND_
 - = MON_FND_
 - = I.P._FND_
 - = I.P._SET
 - = MAG_NAIL_FND_
 - = MAG_NAIL_SET
 - ▲ = R.R._SPK_FND_
 - △ = R.R._SPK_SET
 - ◆ = P.K._NAIL_FND_
- I.P. Set are 13/16" I.D. iron pipes
 30" long with cap inscribed EMHT INC.



BASIS OF BEARINGS:-
 The Bearings shown hereon are based on the Ohio State Plane Coordinate System, South Zone, as per NAD83 (1986 Adjustment). Control for bearings was from coordinates of monuments FRANK 73 and FRANK 174, established by the Franklin County Engineering Department, using Global Positioning System procedures and equipment, giving a bearing of South 03° 26' 58" West for a portion of Tuller Ridge Drive.

SURVEY NOTE:-
 This survey was prepared using documents of record, prior plats of survey, and observed evidence located by an actual field survey.

By *Heather L. King* 1/19/18
 Heather L. King Date
 Professional Surveyor No. 8307

Evans, Mechwart, Hambleton & Tilton, Inc. Engineers • Surveyors • Planners • Scientists 5500 New Albany Road, Columbus, OH 43054 Phone: 614.775.4500 Toll Free: 888.775.3648 emht.com		Date: January 18, 2018
		Scale: 1" = 60'
		Job No: 2018-0105
		Sheet: 1 of 1
REVISIONS		
MARK	DATE	DESCRIPTION