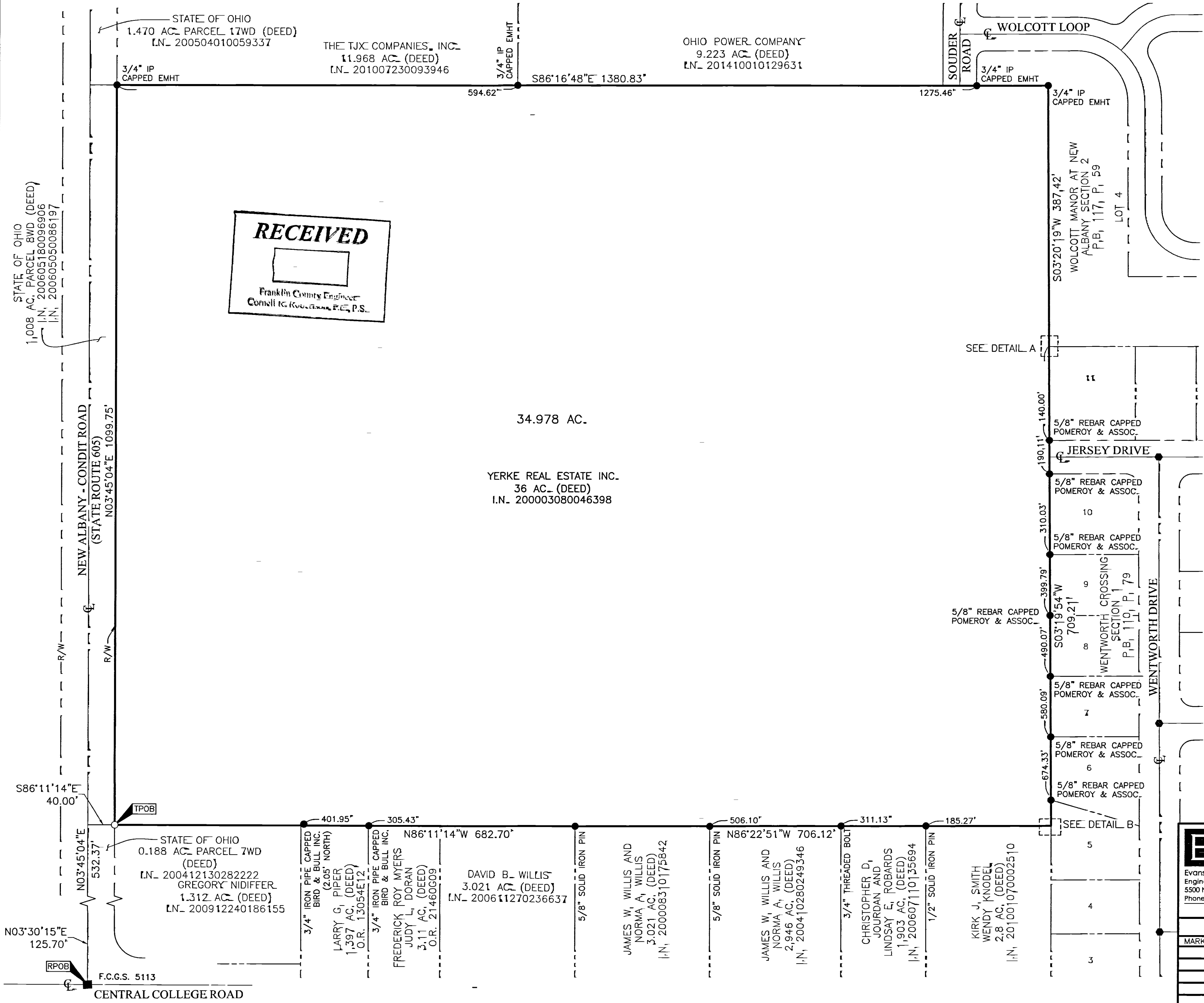


SURVEY OF ACREAGE PARCEL

SECTION 8, QUARTER TOWNSHIP 1, TOWNSHIP 2, RANGE 16

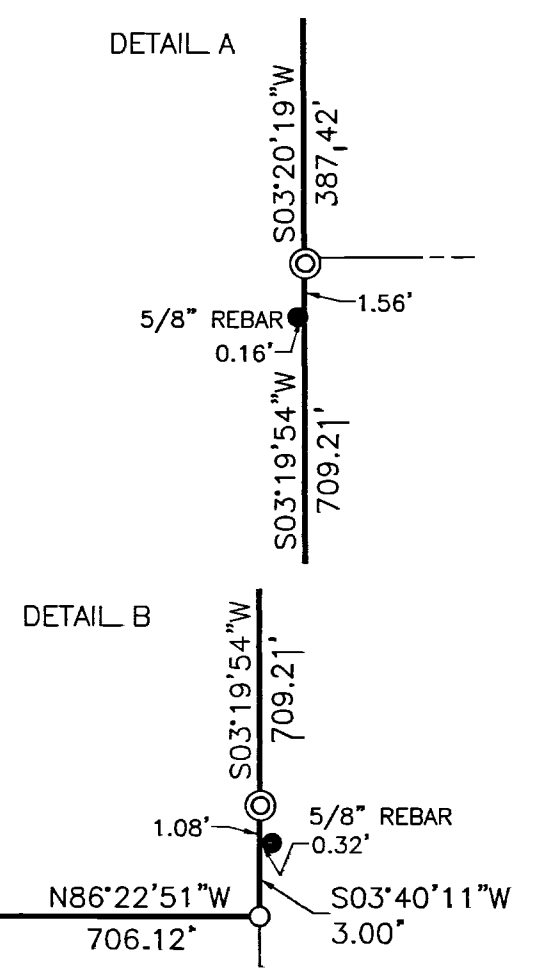
UNITED STATES MILITARY LANDS

CITY OF NEW ALBANY, COUNTY OF FRANKLIN, STATE OF OHIO

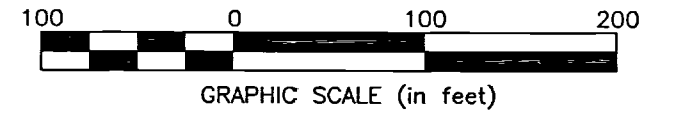


RECEIVED

Franklin County Engineer
Cornell G. Kuebler, P.E., P.S.



- = STONE FND.
 - = MON. FND.
 - = I.P. FND.
 - = I.P. SET
 - = MAG. NAIL FND.
 - = MAG. NAIL SET
 - ▲ = R.R. SPK. FND.
 - △ = R.R. SPK. SET
 - ▲ = P.K. NAIL FND.
 - ◎ = PERM. MRKR. FND.
- I.P. Set are 13/16" I.D. iron pipes 30" long with cap stamped EMHT INC. Permanent Markers found are one-inch solid iron pins with aluminum cap stamped EMHT INC.



BASIS OF BEARINGS:-
Bearings shown herein are based on the Ohio State Plane Coordinate System South Zone as per NAD83 (1986 Adjustment). Control for bearings was from coordinates of monuments Frank 80 and Frank 180, established by the Franklin County Engineering Department, using Global Positioning System procedures and equipment, giving a bearing of South 86° 24' 55" East for a portion of the centerline of New Albany Road East, of record in Plat Book 107, Page 90, Recorder's Office, Franklin County, Ohio.

SURVEY NOTE:-
This survey was prepared using documents of record, prior plats of survey, and observed evidence located by an actual field survey.

By *Heather L. King* 12/18/17
Heather L. King Date
Professional Surveyor No. 8307

EMHT <small>Evans, Mechwart, Hambleton & Tilton, Inc. Engineers • Surveyors • Planners • Scientists 5500 New Albany Road, Columbus, OH 43054 Phone: 614.775.4500 Toll Free: 888.775.3648 emht.com</small>	Date: December 7, 2017
	Scale: 1" = 100'
	Job No.: 2017-1086
	Sheet: 1 of 1

REVISIONS		
MARK	DATE	DESCRIPTION

U:\2017\1086\DWG\CAD\DWG\20171086-VS-BNDY-01.DWG plotted by KING, HEATHER on 12/15/2017 5:13:27 PM last saved by KING on 12/15/2017 5:13:07 PM