

CURVE TABLE					
NO.	LENGTH	RADIUS	DELTA	CHORD	CHORD BEARING
C1	479.05'	540.61'	050°46'18"	463.53'	S50°03'27"E
C2	370.92'	1142.05'	018°36'32"	369.29'	S32°50'50"E
C3	192.06'	230.00'	047°50'36"	186.52'	S33°43'42"E
C4	352.24'	732.83'	027°32'24"	348.86'	S23°34'36"E
C5	673.18'	1380.00'	027°56'58"	666.53'	S25°55'50"E
C6	284.64'	773.78'	021°04'35"	283.03'	S22°29'39"E
C7	102.58'	477.50'	012°18'32"	102.38'	N81°14'46"W
C8	447.01'	522.50'	049°01'03"	433.50'	N62°53'30"W
C9	22.24'	15.00'	084°57'00"	20.26'	N83°57'13"W
C10	416.07'	317.67'	075°02'31"	386.96'	N49°48'45"W

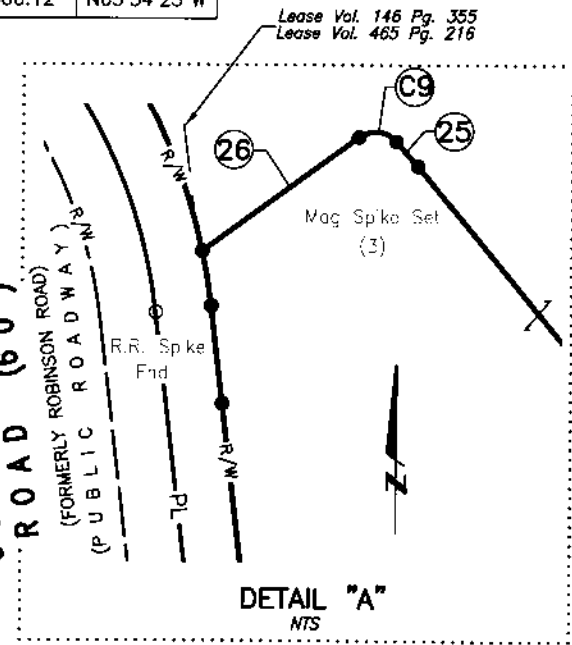
LEAD-IN CURVE TABLE					
NO.	LENGTH	RADIUS	DELTA	CHORD	CHORD BEARING
L6	403.68'	287.68'	80°23'55"	371.36'	N47°05'13"W

LEAD-IN LINE TABLE		
LINE	LENGTH	BEARING
L1	2067.88'	N48°06'00"W
L2	79.94'	N15°09'50"W
L3	76.71'	N07°11'45"W
L4	672.81'	N07°25'42"W
L5	718.60'	N06°53'16"W
L7	589.52'	N87°18'38"W
L8	30.00'	N02°41'22"E

LINE TABLE		
LINE	LENGTH	BEARING
1	509.34'	N42°56'22"E
2	92.08'	N14°46'05"E
3	62.95'	N68°39'31"E
4	1392.33'	N78°41'33"E
5	75.90'	S55°48'56"E
6	109.48'	S33°35'42"E
7	63.37'	S60°13'18"W
8	388.60'	S39°54'20"E
9	78.71'	N69°21'37"E
10	14.68'	S35°44'52"E
11	133.83'	S51°15'44"E
12	131.24'	S17°20'07"E
13	263.36'	S12°01'06"W
14	161.16'	S58°37'36"W
15	53.97'	N66°17'48"W
16	154.01'	S75°31'21"W
17	195.89'	N80°00'25"W
18	306.12'	N63°54'23"W

19	90.16'	N27°16'06"E
20	129.28'	N25°12'38"W
21	90.98'	N77°41'44"W
22	46.57'	N15°31'14"W
23	861.06'	N38°22'59"W
24	846.43'	N39°40'37"W
25	17.98'	N41°28'43"W
26	104.06'	S53°34'16"W
27	589.52'	N87°18'38"W

The bearings shown on this plat are based on the Ohio State Plane Coordinate System, South Zone, NAD83 (2012A). Control for bearings was from coordinates of monuments FCGS 1638 and FCGS 1527, as established by the Franklin County Engineering Department, using Global Positioning System procedures and equipment, with a bearing of **N48°06'00"W** for a portion of the centerline of Dublin Road and is designated the "Basis of Bearing" for this plat.



BY: *Matthew Lee Sloat* 12/14/17
 Matthew Lee Sloat, P.E., P.S.
 Registered Surveyor No. 8342
 Date

DRWN BY CRK CHK BY MLS DATE 12-14-17
 1005013

E. P. FERRIS AND ASSOCIATES Inc.
 CONSULTING CIVIL ENGINEERS AND SURVEYORS
 CONTACT:
 880 KING AVENUE
 COLUMBUS, OHIO 43212
 (614) 299-2999
 (614) 299-2992 (Fax)
 www.EPFERRIS.com

BOUNDARY SURVEY
69.989 AC.
 CITY OF COLUMBUS, COUNTY OF FRANKLIN, OHIO
 Virginia Military Survey No. 544

JOB NO.	1005013
DRAWN BY:	CRK
CHECKED BY:	MLS
APPROVED BY:	MLS
DATE:	12-14-17