

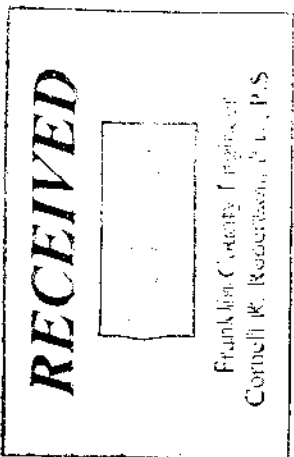
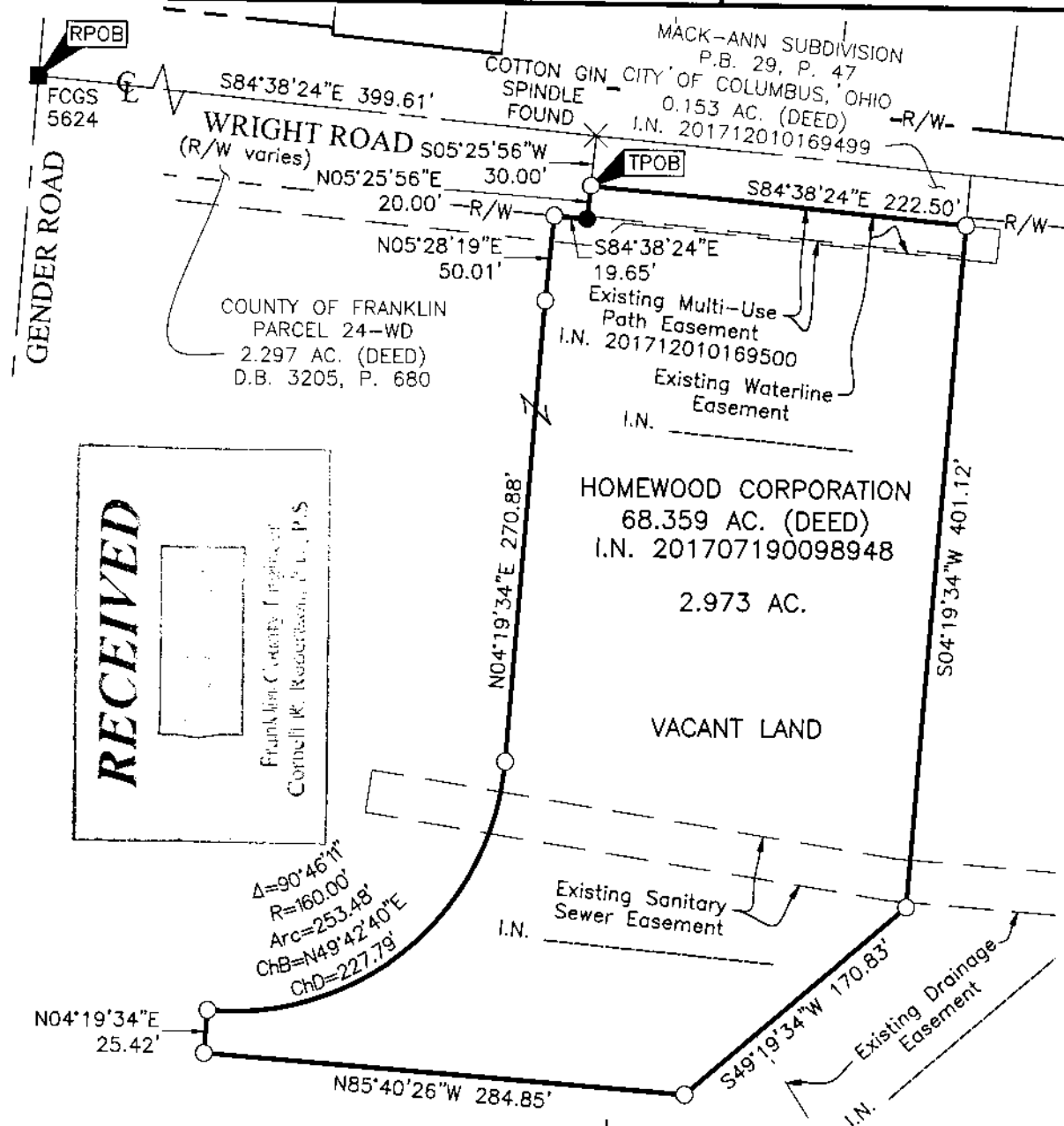


Evans, Mechwart, Hambleton & Tilton, Inc.
 Engineers • Surveyors • Planners • Scientists
 5500 New Albany Road, Columbus, OH 43054
 Phone: 614.775.4500 Toll Free: 866.775.3648
 emht.com

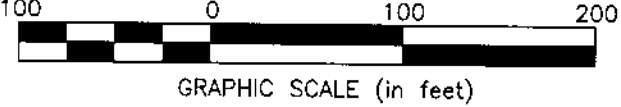
SURVEY OF ACREAGE PARCEL

SECTION 12, TOWNSHIP 11, RANGE 21, CONGRESS LANDS
 CITY OF COLUMBUS, COUNTY OF FRANKLIN, STATE OF OHIO

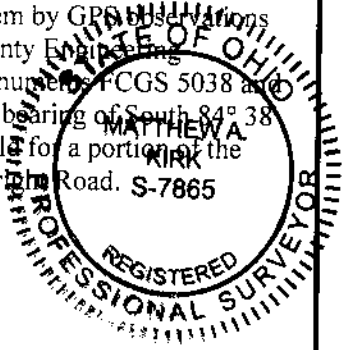
Date: December 18, 2017 Job No: 2017-0968 Scale: 1" = 100'



- ✕ = COTTON GIN SPINDLE FND.
 - = MON. FND.
 - = 3/4" I.P. FND. CAPPED "RD ZANDE" UNLESS OTHERWISE STATED
 - = I.P. SET
 - = MAG. NAIL FND.
 - = MAG. NAIL SET
- I.P. Set are 13/16" I.D. iron pipes 30" long with cap inscribed EMHT INC.



BASIS OF BEARINGS:
 The bearings shown hereon are based on the Ohio State Plane Coordinate System, South zone, NAD83 (NSRS2007). Said bearings originated from a field traverse which was tied (referenced) to said coordinate system by GPS observations of Franklin County Engineer Department monuments FCGS 5038 and FCGS 5467. A bearing of South 84° 38' 24" East was held for a portion of the centerline of Wright Road. S-7865



SURVEY NOTE:
 This survey was prepared using documents of record, prior plats of survey, and observed evidence located by an actual field survey.

By Matthew A. Kirk 18 Dec 17
 Matthew A. Kirk Date
 Professional Surveyor No. 7865

K-8-F

J:\20170968\DWG\04SHEETS\BOUNDARY\20170968-V5-BNDY-01.DWG plotted by KIRK, MATTHEW on 12/18/2017 2:09:41 PM last saved by KIRK, MATTHEW on 12/18/2017 2:09:13 PM