

EMHT
 Evans, Mechwart, Hambleton & Tilton, Inc.
 Engineers • Surveyors • Planners • Scientists
 6500 New Albany Road, Columbus, OH 43054
 Phone: 614.775.4500 Toll Free: 888.775.3648
 emht.com

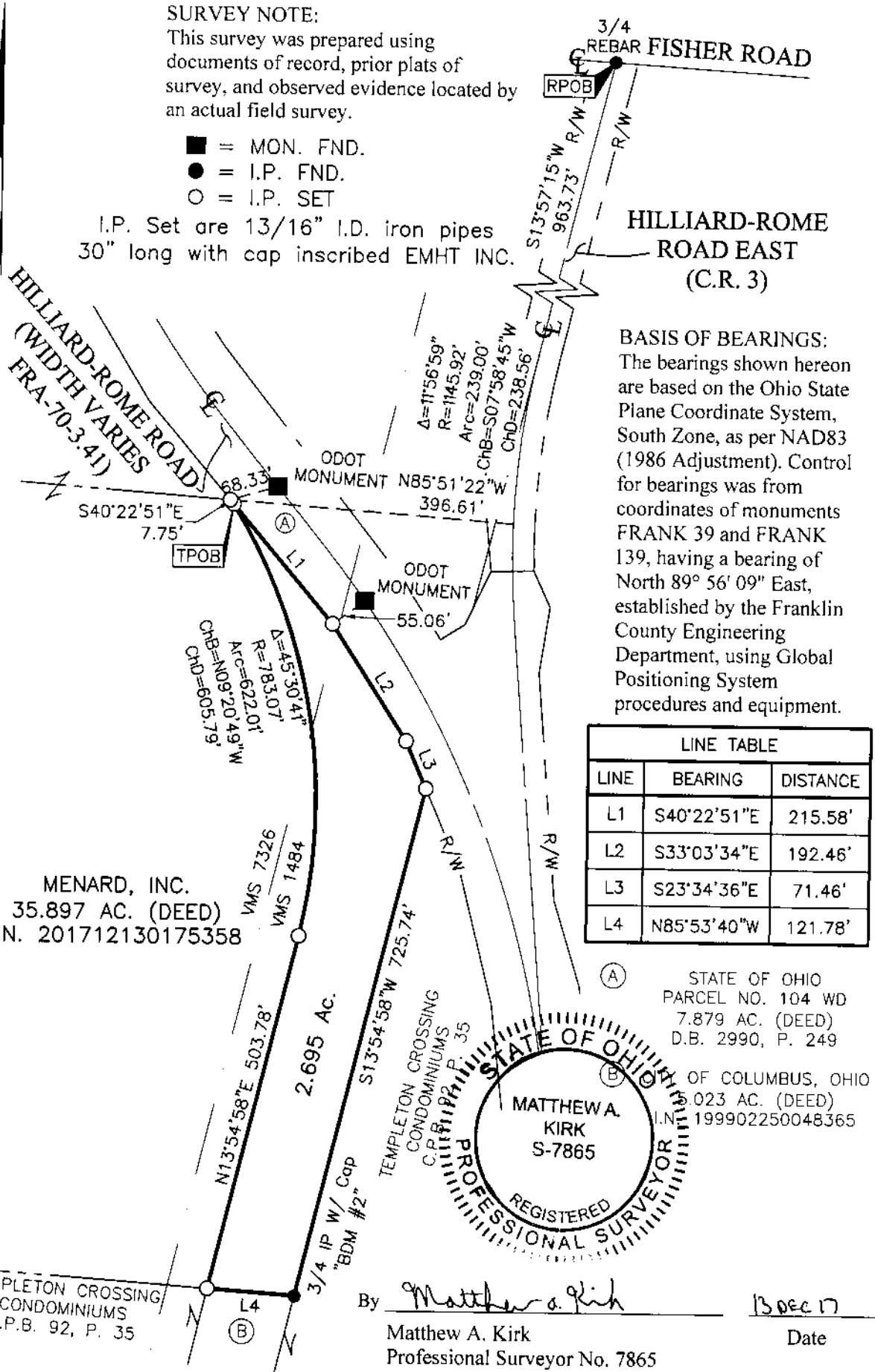
SURVEY OF ACREAGE PARCEL
VIRGINIA MILITARY SURVEY NUMBERS 7326 AND 1484
CITY OF COLUMBUS, COUNTY OF FRANKLIN, STATE OF OHIO

Date: December 13, 2017 Job No: 2017-1430 Scale: 1" = 200'

SURVEY NOTE:
 This survey was prepared using documents of record, prior plats of survey, and observed evidence located by an actual field survey.

- = MON. FND.
- = I.P. FND.
- = I.P. SET

I.P. Set are 13/16" I.D. iron pipes 30" long with cap inscribed EMHT INC.

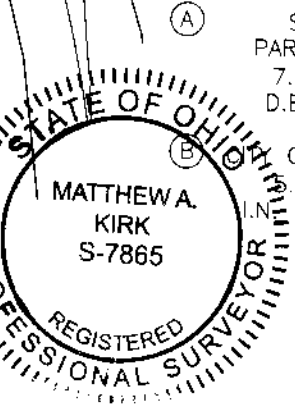


BASIS OF BEARINGS:
 The bearings shown hereon are based on the Ohio State Plane Coordinate System, South Zone, as per NAD83 (1986 Adjustment). Control for bearings was from coordinates of monuments FRANK 39 and FRANK 139, having a bearing of North 89° 56' 09" East, established by the Franklin County Engineering Department, using Global Positioning System procedures and equipment.

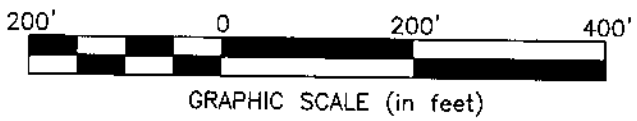
LINE TABLE		
LINE	BEARING	DISTANCE
L1	S40°22'51"E	215.58'
L2	S33°03'34"E	192.46'
L3	S23°34'36"E	71.46'
L4	N85°53'40"W	121.78'

MENARD, INC.
 35.897 AC. (DEED)
 I.N. 201712130175358

STATE OF OHIO
 PARCEL NO. 104 WD
 7.879 AC. (DEED)
 D.B. 2990, P. 249
 OF COLUMBUS, OHIO
 0.023 AC. (DEED)
 I.N. 199902250048365



By Matthew A. Kirk Date 13 Dec 17
 Matthew A. Kirk
 Professional Surveyor No. 7865



J:\2017\1430\DWG\04SHEETS\BOUNDARY\20171430-VS-BNDY-01.DWG plotted by PRITCHARD, JAN on 12/13/2017 3:11:43 PM last saved by PRITCHARD on 12/13/2017 3:10:13 PM Xrefs: