

# SURVEY OF ACREAGE PARCEL

## SECTION 9, TOWNSHIP 5, RANGE 22

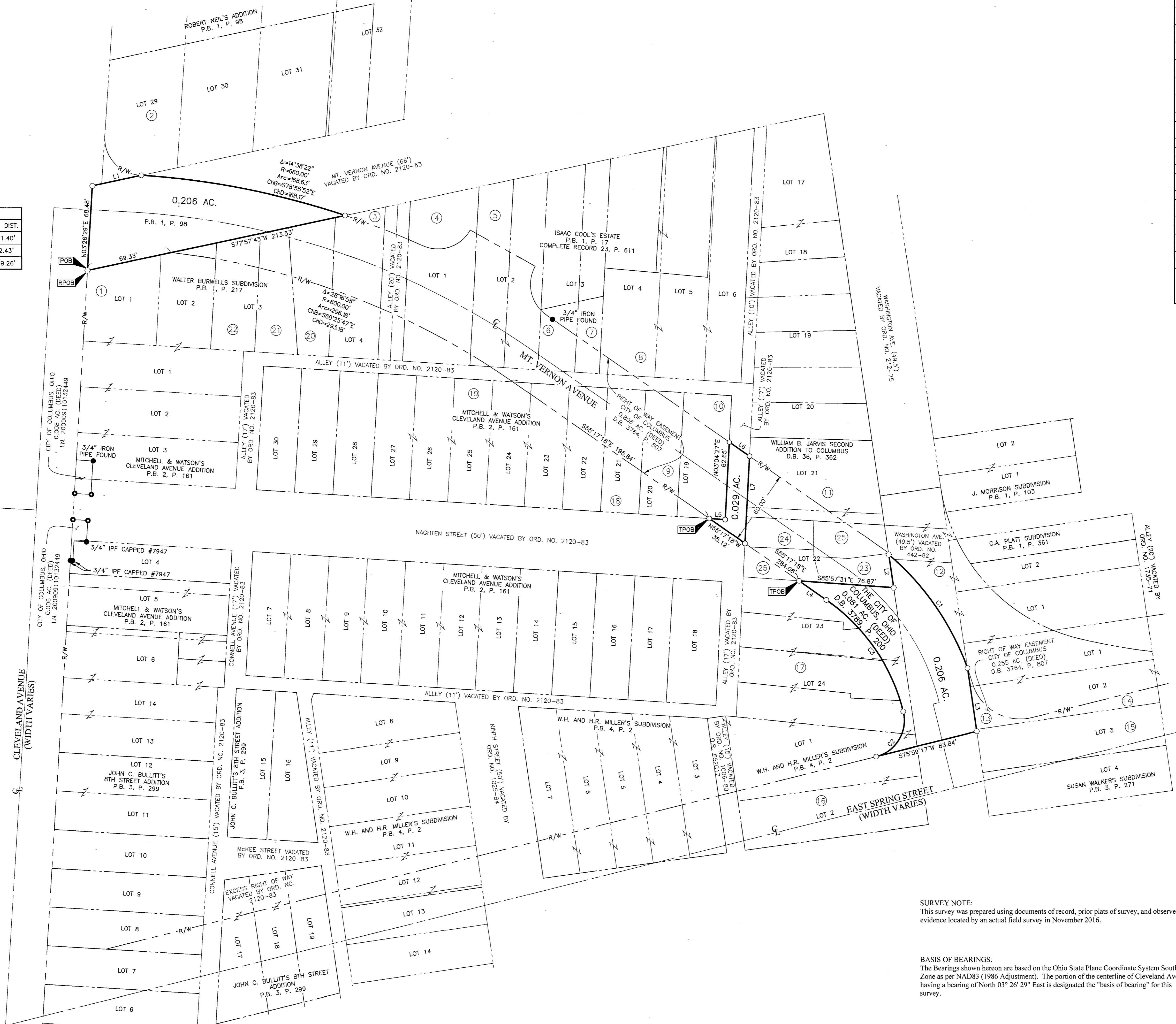
### REFUGEE LANDS

### CITY OF COLUMBUS, COUNTY OF FRANKLIN, STATE OF OHIO

#	OWNERSHIP NAME	DEED REFERENCE
1	THE BOARD OF TRUSTEES OF COLUMBUS TECHNICAL INSTITUTE	O.R. 631E14
2	THE BOARD OF TRUSTEES OF THE COLUMBUS TECHNICAL INSTITUTE, DISTRICT OF COLUMBUS, OHIO	D.B. 3266, P. 416
3	THE BOARD OF TRUSTEES OF THE COLUMBUS TECHNICAL INSTITUTE, DISTRICT OF COLUMBUS, OHIO	D.B. 3340, P. 360
4	THE BOARD OF TRUSTEES OF THE COLUMBUS TECHNICAL INSTITUTE, DISTRICT OF COLUMBUS, OHIO	D.B. 3290, P. 256
5	THE COLUMBUS TECHNICAL INSTITUTE, DISTRICT OF COLUMBUS, OHIO	D.B. 3266, P. 416
6	THE BOARD OF TRUSTEES OF THE COLUMBUS TECHNICAL INSTITUTE, DISTRICT OF COLUMBUS, OHIO	D.B. 3290, P. 246
7	THE BOARD OF TRUSTEES OF THE COLUMBUS TECHNICAL INSTITUTE, DISTRICT OF COLUMBUS, OHIO	D.B. 3290, P. 242
8	COLUMBUS TECHNICAL INSTITUTE DISTRICT OF COLUMBUS, OHIO	D.B. 3494, P. 608
9	BOARD OF TRUSTEES OF COLUMBUS TECHNICAL INSTITUTE, DISTRICT OF COLUMBUS, OHIO	D.B. 3448, P. 819
10	THE BOARD OF TRUSTEES OF THE COLUMBUS TECHNICAL INSTITUTE, DISTRICT OF COLUMBUS, OHIO	D.B. 3461, P. 990
11	THE BOARD OF TRUSTEES OF THE COLUMBUS TECHNICAL INSTITUTE, DISTRICT OF COLUMBUS, OHIO	D.B. 3114, P. 203
12	COLUMBUS STATE COMMUNITY COLLEGE	O.R. 29350D18
13	THE BOARD OF TRUSTEES OF THE COLUMBUS TECHNICAL INSTITUTE DISTRICT	D.B. 2969, P. 498
14	THE CITY OF COLUMBUS, OHIO	D.B. 2328, P. 353
15	THE CITY OF COLUMBUS, OHIO	D.B. 2361, P. 402
16	THE CITY OF COLUMBUS, OHIO	D.B. 2370, P. 627
17	COLUMBUS TECHNICAL INSTITUTE	O.R. 2228/03
18	THE BOARD OF TRUSTEES OF THE COLUMBUS TECHNICAL INSTITUTE, DISTRICT OF COLUMBUS, OHIO	D.B. 3290, P. 250
19	COLUMBUS TECHNICAL INSTITUTE DISTRICT	D.B. 3539, P. 218
20	BOARD OF TRUSTEES OF COLUMBUS TECHNICAL INSTITUTE, DISTRICT OF COLUMBUS, OHIO	D.B. 3583, P. 157
21	THE BOARD OF TRUSTEES OF THE COLUMBUS TECHNICAL INSTITUTE, DISTRICT OF COLUMBUS, OHIO	D.B. 3317, P. 190
22	BOARD OF TRUSTEES, COLUMBUS TECHNICAL INSTITUTE, DISTRICT OF COLUMBUS, OHIO	D.B. 3498, P. 360
23	THE CITY OF COLUMBUS, OHIO	D.B. 492, P. 3
24	THE CITY OF COLUMBUS, OHIO	D.B. 491, P. 276
25	THE CITY OF COLUMBUS, OHIO	Franklin County Probate Court Case #24309 July 14, 1910

CURVE	DELTA	RADIUS	ARC	CH. BEARING	CH. DIST.
C1	30°01'47"	215.00'	112.68'	S34°43'38"E	111.40'
C2	90°00'01"	30.00'	47.12'	N30°59'16"E	42.43'
C3	41°16'34"	155.00'	111.66'	N34°39'01"W	109.26'

LINE	BEARING	DISTANCE
L1	N77°57'43"E	40.56'
L2	N08°20'45"W	27.08'
L3	S08°20'45"E	51.61'
L4	N55°17'18"W	26.85'
L5	S86°23'31"E	12.90'
L6	S55°17'18"E	19.97'
L7	S03°04'27"W	70.47'



**RECEIVED**

Franklin County Engineer  
Curtis K. Rubenstein, P.E., P.S.

- = DRILL HOLE FND.
  - = MON. FND.
  - = I.P. FND.
  - = I.P. SET
  - = MAG. NAIL FND.
  - = MAG. NAIL SET
  - = R.R. SPK. FND.
  - = R.R. SPK. SET
  - = P.K. NAIL FND.
  - = P.K. NAIL SET
- I.P. Set are 13/16" I.D. iron pipes 30" long with cap inscribed EMHT INC.
- GRAPHIC SCALE (in feet)

**SURVEY NOTE:**  
This survey was prepared using documents of record, prior plats of survey, and observed evidence located by an actual field survey in November 2016.

**BASIS OF BEARINGS:**  
The Bearings shown hereon are based on the Ohio State Plane Coordinate System South Zone as per NAD83 (1986 Adjustment). The portion of the centerline of Cleveland Avenue, having a bearing of North 03° 26' 29" East is designated the "basis of bearing" for this survey.

By *JM*  
Joshua M. Meyer  
Professional Surveyor No. 8485

Date: 11-20-2017

<b>EMHT</b> Evans, Mechwart, Hambleton & Tillon, Inc. Engineers • Surveyors • Planners • Scientists 5500 New Albany Road, Columbus, OH 43254 Phone: 614.778.6200    Fax: 614.778.3446 emht.com		Date: September 14, 2017
		Scale: 1" = 40'
		Job No: 2017-0814
		Sheet: 1 of 1
<b>REVISIONS</b>		
MARK	DATE	DESCRIPTION
JMM	11/20/17	Added 0.029 acre parcel