



Evans, Mechwart, Hambleton & Tilton, Inc.
 Engineers • Surveyors • Planners • Scientists
 5500 New Albany Road, Columbus, OH 43054
 Phone: 614.775.4500 Toll Free: 888.775.3648

emht.com

SURVEY OF ACREAGE PARCELS

SECTION 6, TOWNSHIP 5, RANGE 22

REFUGEE LANDS

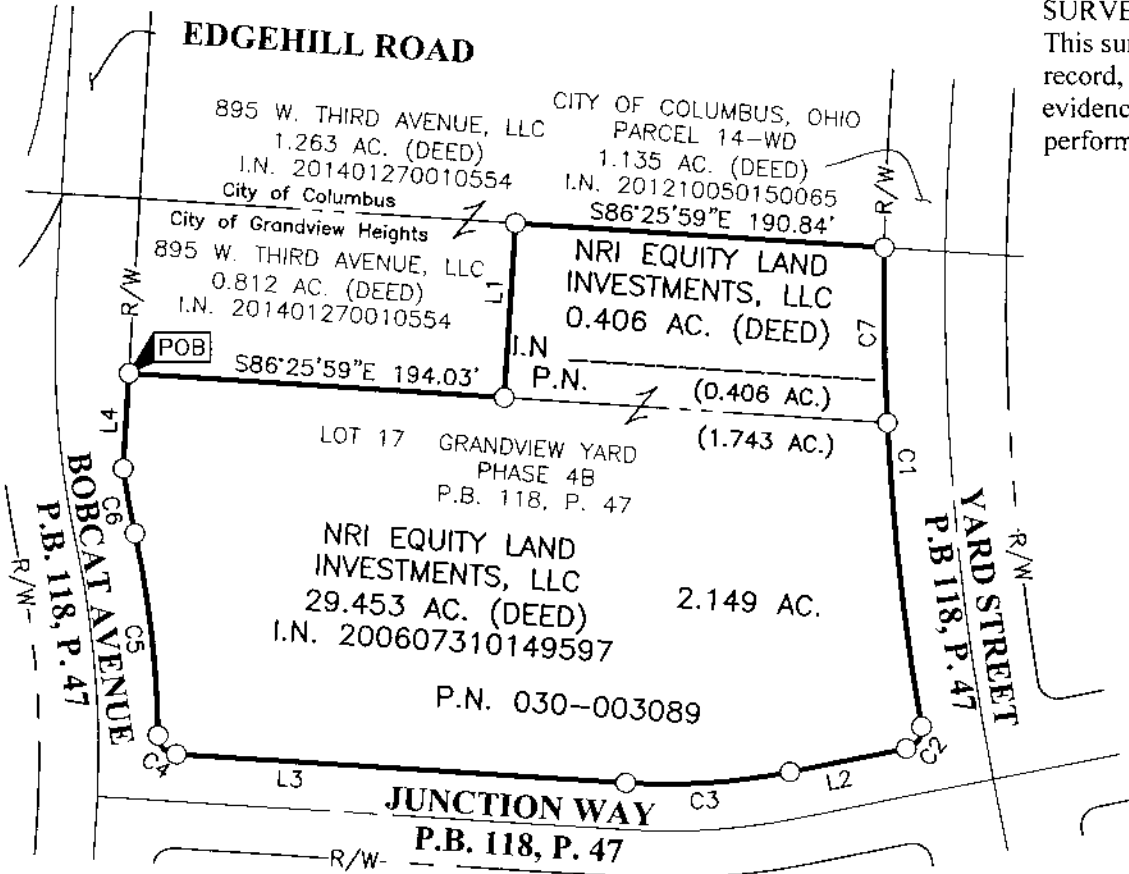
CITY OF GRANDVIEW HEIGHTS, COUNTY OF FRANKLIN, STATE OF OHIO

Date: October 24, 2017

Scale: 1" = 100'

Job No: 2017-1253

Sheet 1 of 2



SURVEY NOTE:

This survey was prepared using documents of record, prior plats of survey, and observed evidence located by an actual field survey performed in October, 2017.

BASIS OF BEARINGS:

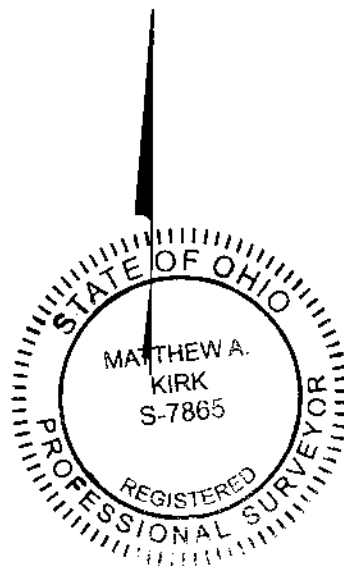
The bearings shown hereon are based on the Ohio State Plane Coordinate System South Zone, NAD83 (1986 Adjustment). Control for bearings was from coordinates of monuments 5-83 and 4-83, having a bearing of North 00° 22' 10" West, for a portion of the west limited access right of way of Olentangy River Road, established by the Franklin County Engineering Department using Global Positioning System procedures and equipment.

○ = I.P. SET

I.P. Set are 13/16" I.D. iron pipes 30" long with cap inscribed EMHT INC.



GRAPHIC SCALE (in feet)



By Matthew A. Kirk 24 Oct 17
 Matthew A. Kirk Date
 Professional Surveyor No. 7865

J:\20171253\DWG\04SHEETS\BOUNDARY\20171253-VS-BNDY-03.DWG plotted by PRITCHARD, IAN on 10/24/2017 8:02:47 AM last saved by MKIRK on 10/19/2017 2:56:43 PM
 Xrefs:

RECEIVED

OCT 24 2017

Franklin County Engineer
 Connell R. Robertson, P.E., P.S.



Evans, Mechwart, Hambleton & Tilton, Inc.
 Engineers • Surveyors • Planners • Scientists
 5500 New Albany Road, Columbus, OH 43054
 Phone: 614.775.4500 Toll Free: 888.775.3648

emht.com

SURVEY OF ACREAGE PARCELS

SECTION 6, TOWNSHIP 5, RANGE 22

REFUGEE LANDS

CITY OF GRANDVIEW HEIGHTS, COUNTY OF FRANKLIN, STATE OF OHIO

Date: October 24, 2017

Scale: 1" = 60'

Job No: 2017-1253

Sheet 2 of 2

CURVE TABLE

CURVE	DELTA	RADIUS	ARC	CH. BEARING	CH. DIST.
C1	10°46'30"	1331.50'	250.40'	S04°38'56"E	250.03'
C2	88°26'12"	10.00'	15.44'	S34°10'55"W	13.95'
C3	15°01'04"	325.50'	85.32'	S85°54'33"W	85.07'
C4	85°39'57"	10.00'	14.95'	N43°44'57"W	13.60'
C5	11°19'05"	536.00'	105.88'	N06°34'31"W	105.71'
C6	4°09'42"	474.00'	34.43'	N10°09'12"W	34.42'
C7	3°55'57"	1331.50'	91.39'	S01°13'40"E	91.37'

LINE TABLE

LINE	BEARING	DISTANCE
L1	N03°34'01"E	91.05'
L2	S78°24'01"W	61.64'
L3	N86°34'55"W	232.79'
L4	N03°25'05"E	49.77'

