

RECEIVED

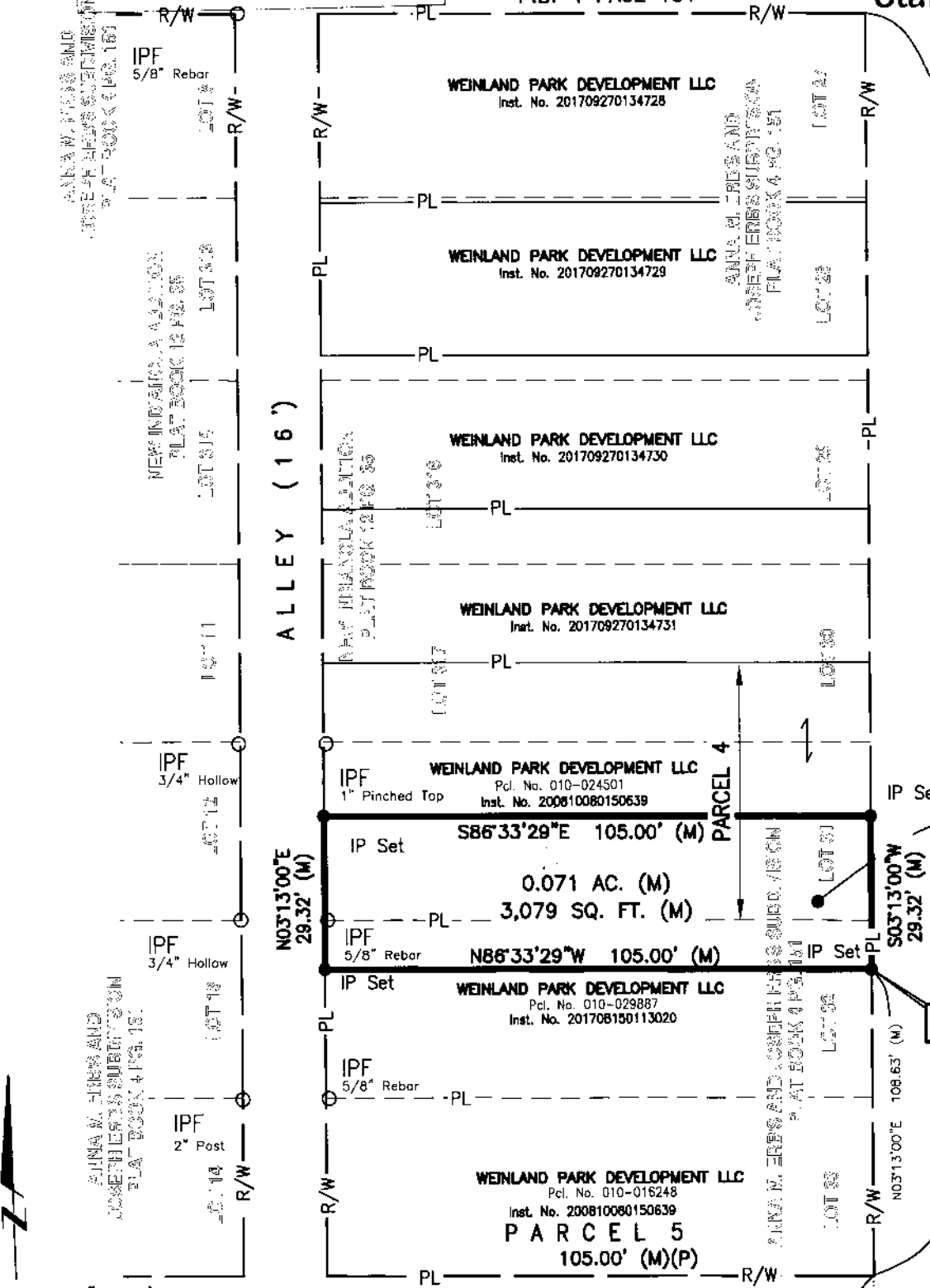
NOV 01 2017

East by County Engineer
Contract to: Kowalski, P.S.

0.071 Acre LOT SPLIT
Quarter Township 4,
Township 1, Range 18
United States Military Lands
City of Columbus
Franklin County
State of Ohio

ALLEY (16')
P.B. 4 PAGE 151

GRANT AVENUE (VARIES)
(Public Roadway)
P.B. 4 PAGE 151



241.00' (P) 241.14'(M)

Pct. No. 010-024501
0.048 AC. (M)
2,090 SQ. FT. (M)
Pct. No. 010-029887
0.023 AC. (M)
989 SQ. FT. (M)
0.071 AC. (M)
3,079 SQ. FT. (M)

Scale: 1" = 30'

BASIS OF BEARINGS

The bearings shown on this plat are based on the Ohio State Plane Coordinate System, South Zone, NAD83 (CORS95). Said bearings originated from a field traverse which was referenced to said coordinate system by GPS observations and observations of selected stations in the Ohio Department of Transportation Virtual Reference Station network. The west right of way line of Grant Ave has an assumed bearing of N03°13'00"E and is designated as "basis of bearing" for this plat.

Field survey was conducted on 08-14-17. All monuments found are in good condition unless otherwise noted.

We hereby certify that the foregoing Boundary Survey was prepared from actual field measurements in accordance with Chapter 4733-37 Ohio Administrative Code.

All iron pins set are 5/8" rebar, 30" in length with yellow plastic cap with "EP FERRIS SURVEYOR 8342" inscribed on top.



- Legend
- PL Property Line
- R/W Right-of-Way
- Iron Pin Found (IPF)
- Mag Nail Found
- Iron Pin Set
- (D/X)P Deed or Plat
- (M) Measured Value

E. P. FERRIS
ASSOCIATES
Consulting Civil Engineers and Surveyors

CONTACT:
880 KING AVENUE
COLUMBUS, OHIO 43212
(614) 299-2999
(614) 299-2992 (Fax)
www.EPFERRIS.com

BY: Matthew Lee Sloat 10/30/17
Matthew Lee Sloat, P.E., P.S.
Registered Surveyor No. 8342

DRWN BY CRK CHK BY MLS DATE 10-25-17