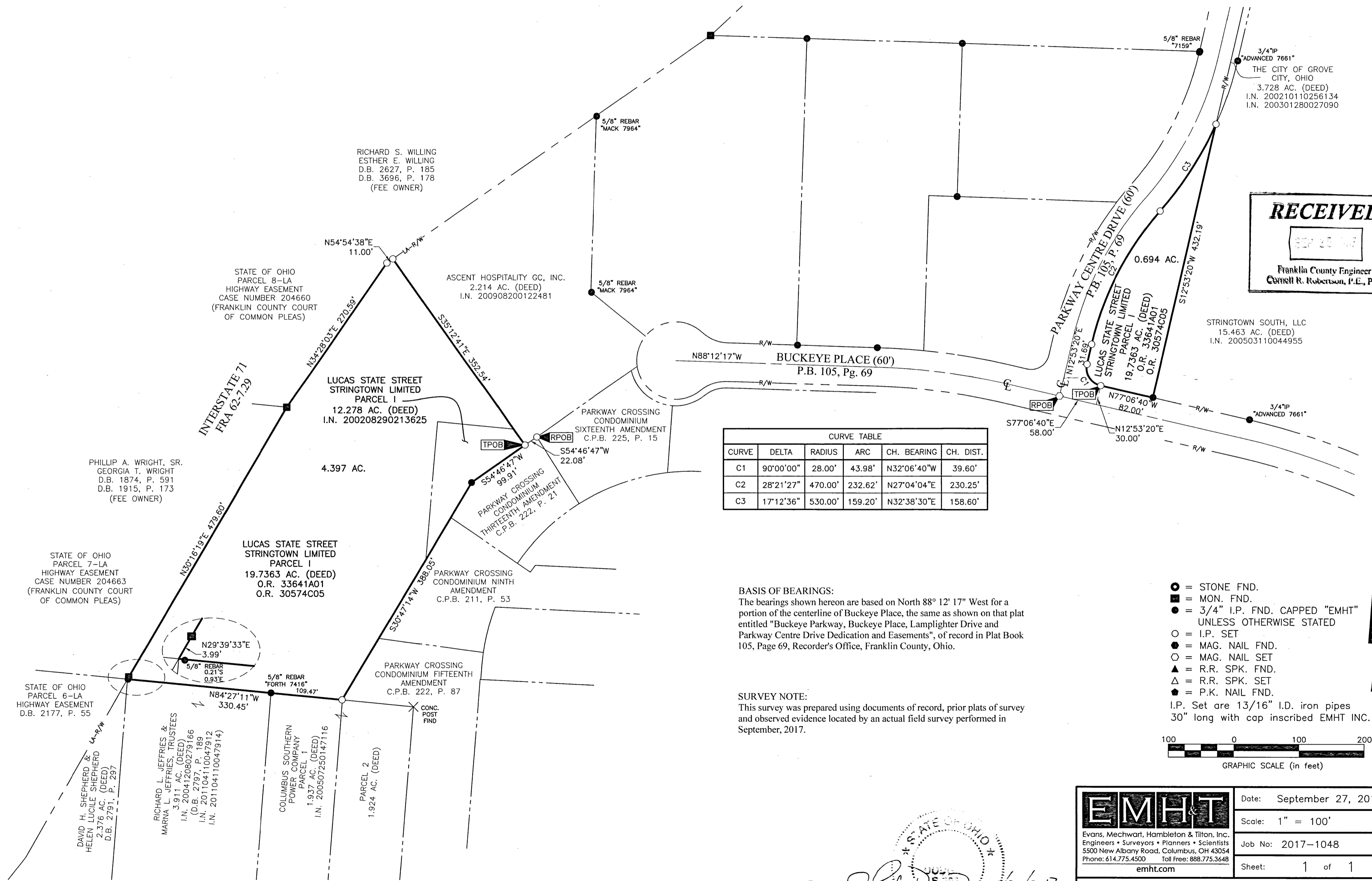


SURVEY OF ACREAGE PARCELS

VIRGINIA MILITARY SURVEY NUMBER 8231

CITY OF GROVE CITY, COUNTY OF FRANKLIN, STATE OF OHIO



RECEIVED

SEP 28 2017

Franklin County Engineer
Cornell R. Robertson, P.E., P.S.

CURVE TABLE					
CURVE	DELTA	RADIUS	ARC	CH. BEARING	CH. DIST.
C1	90°00'00"	28.00'	43.98'	N32°06'40"W	39.60'
C2	28°21'27"	470.00'	232.62'	N27°04'04"E	230.25'
C3	17°12'36"	530.00'	159.20'	N32°38'30"E	158.60'

BASIS OF BEARINGS:
The bearings shown hereon are based on North 88° 12' 17" West for a portion of the centerline of Buckeye Place, the same as shown on that plat entitled "Buckeye Parkway, Buckeye Place, Lamplighter Drive and Parkway Centre Drive Dedication and Easements", of record in Plat Book 105, Page 69, Recorder's Office, Franklin County, Ohio.

SURVEY NOTE:
This survey was prepared using documents of record, prior plats of survey and observed evidence located by an actual field survey performed in September, 2017.

- = STONE FND.
 - = MON. FND.
 - = 3/4" I.P. FND. CAPPED "EMHT" UNLESS OTHERWISE STATED
 - = I.P. SET
 - = MAG. NAIL FND.
 - = MAG. NAIL SET
 - ▲ = R.R. SPK. FND.
 - △ = R.R. SPK. SET
 - ◆ = P.K. NAIL FND.
- I.P. Set are 13/16" I.D. iron pipes 30" long with cap inscribed EMHT INC.



By John C. Dodgion 09/29/2017
Professional Surveyor No. 8069 Date

<p style="font-size: small;">Evans, Mechwart, Hambleton & Tilton, Inc. Engineers • Surveyors • Planners • Scientists 5500 New Albany Road, Columbus, OH 43054 Phone: 614.775.4500 Toll Free: 888.775.3648 emht.com</p>	Date: September 27, 2017	
	Scale: 1" = 100'	
	Job No: 2017-1048	
	Sheet: 1 of 1	
REVISIONS		
MARK	DATE	DESCRIPTION

D:\2017\1048\DWG\CASHIERS\BOUNDARY\20171048-VS-BNDY-01.DWG plotted by JDOODGION on 9/29/2017 7:17:25 AM