



Evans, Mechwart, Hambleton & Tilton, Inc.  
 Engineers • Surveyors • Planners • Scientists  
 5500 New Albany Road, Columbus, OH 43054  
 Phone: 614.775.4500 Toll Free: 888.775.3648  
 emht.com

# SURVEY OF ACREAGE PARCELS

## HALF SECTION 30, SECTION 18, TOWNSHIP 16, RANGE 20

### REFUGEE LANDS

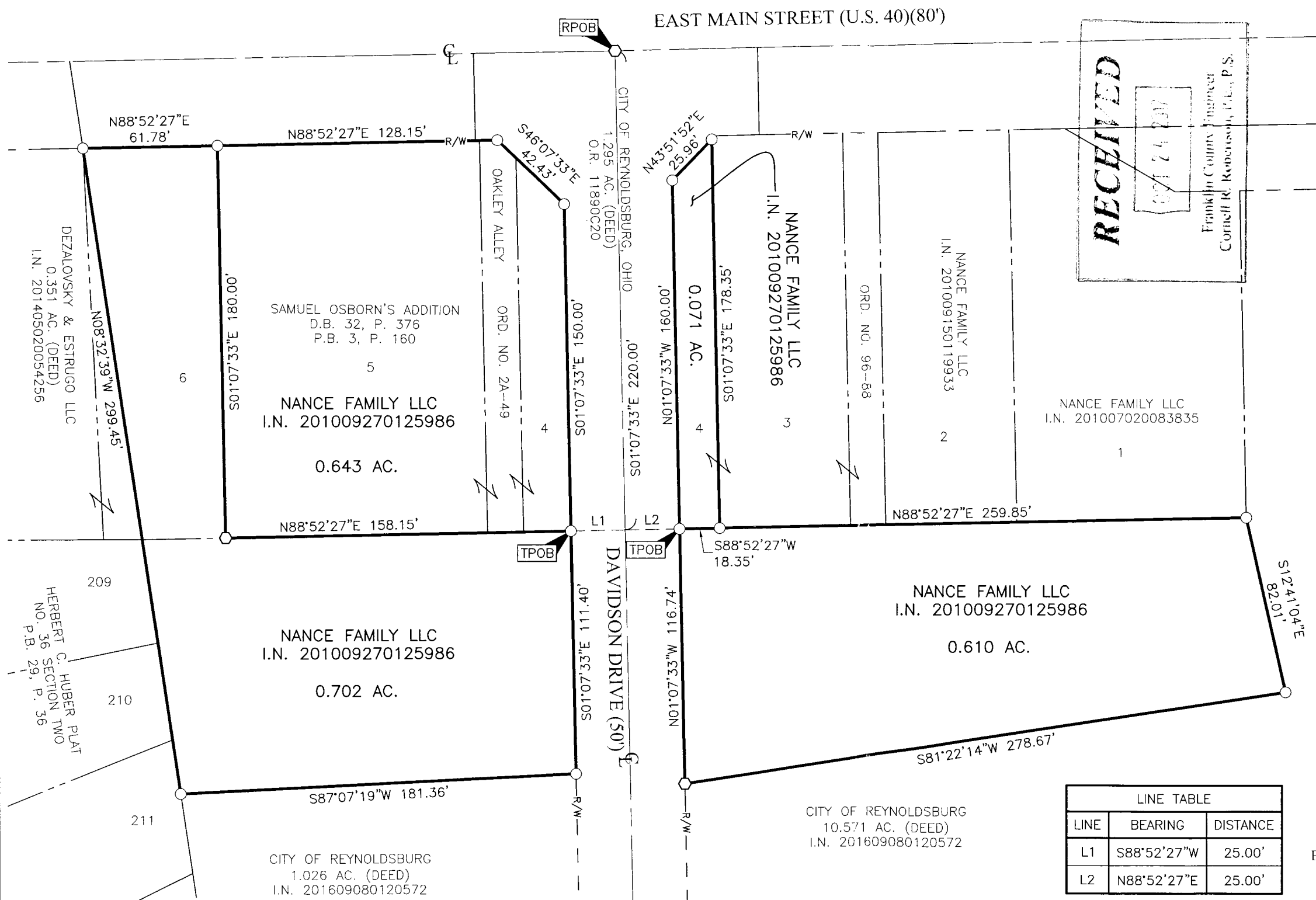
CITY OF REYNOLDSBURG, COUNTY OF FRANKLIN, STATE OF OHIO

Date: October 24, 2017

Scale: 1" = 50'

Job No: 2017-1260

J:\20171260\DWG\045SHEETS\BOUNDARY\20171260-VS-BNDY-01.DWG plotted by KIRK, MATTHEW on 10/24/2017 7:32:38 AM



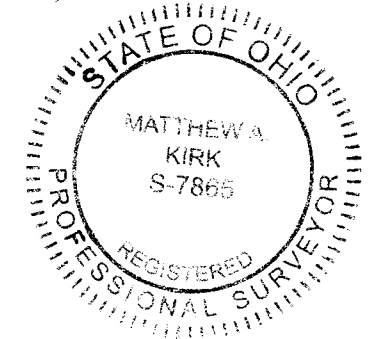
- = STONE FND.
- = MON. FND.
- = I.P. FND.
- = I.P. SET
- = MAG. NAIL FND.
- = MAG. NAIL SET
- ▲ = R.R. SPK. FND.
- △ = R.R. SPK. SET
- = P.K. NAIL FND.

I.P. Set are 13/16" I.D. iron pipes 30" long with cap inscribed EMHT INC.

GRAPHIC SCALE (in feet)

**SURVEY NOTE:**  
 This survey was prepared using documents of record, prior plats of survey and observed evidence located by an actual field survey performed in May, 2016..

**BASIS OF BEARINGS:**  
 The bearings shown hereon are based on the Ohio State Plane Coordinate System South Zone as per NAD83 (1986 Adjustment). Said bearings originated from a field traverse which was tied (referenced) to said coordinated system by GPS observations of Franklin County Engineering Department monuments REYNOLDSBURG and HOWELL2. A bearing of North 88° 52' 27" East was held for a section of the southerly right-of-way line of East Main Street (U.S. 40).



LINE TABLE		
LINE	BEARING	DISTANCE
L1	S88°52'27"W	25.00'
L2	N88°52'27"E	25.00'

By Matthew A. Kirk 24 Oct 17  
 Matthew A. Kirk Date  
 Professional Surveyor No. 7865