



Evans, Mechwart, Hambleton & Tilton, Inc.  
 Engineers • Surveyors • Planners • Scientists  
 5500 New Albany Road, Columbus, OH 43054  
 Phone: 614.775.4500 Toll Free: 888.775.3648

emht.com

# SURVEY OF ACREAGE PARCEL

VIRGINIA MILITARY SURVEY NUMBER 6366

TOWNSHIP OF WASHINGTON, COUNTY OF FRANKLIN, STATE OF OHIO

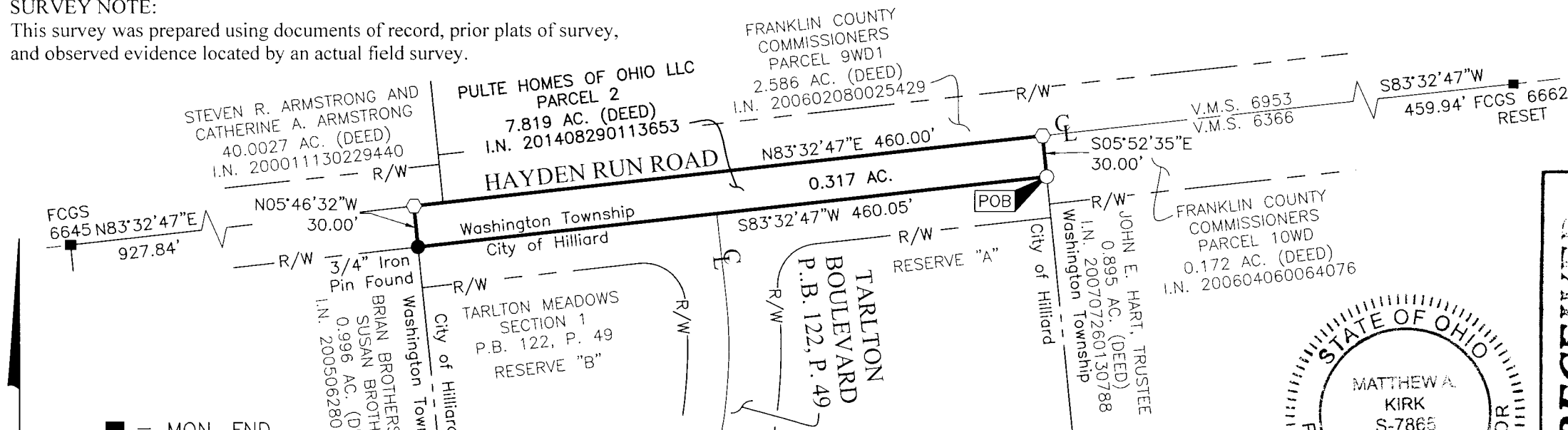
Date: October 11, 2017

Scale: 1" = 60'

Job No: 2016-1044

## SURVEY NOTE:

This survey was prepared using documents of record, prior plats of survey, and observed evidence located by an actual field survey.



- = MON. FND.
- = 3/4" I.P. FND.
- = I.P. SET
- ◇ = MAG. NAIL SET

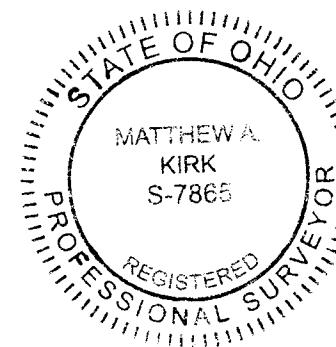
I.P. Set are 13/16" I.D. iron pipes 30" long with cap inscribed EMHT INC.



GRAPHIC SCALE (in feet)

## BASIS OF BEARINGS:

The bearings shown hereon are based on the Ohio State Plane Coordinate System, South Zone, NAD83 (2011). Control for bearings was from coordinates of monuments FCGS 6645 and FCGS 6662 RESET, having a bearing of North 83° 32' 47" East between said monuments, established by the Franklin County Engineering Department, using Global Positioning System procedures and equipment.



By Matthew A. Kirk Date 11 Oct 17  
 Matthew A. Kirk  
 Professional Surveyor No. 7865

