



Evans, Mechwart, Hambleton & Tilton, Inc.  
 Engineers • Surveyors • Planners • Scientists  
 5500 New Albany Road, Columbus, OH 43054  
 Phone: 614.775.4500 Toll Free: 888.775.3648  
 emht.com

# RIGHT-OF-WAY VACATION

SECTION 6, TOWNSHIP 5, RANGE 22

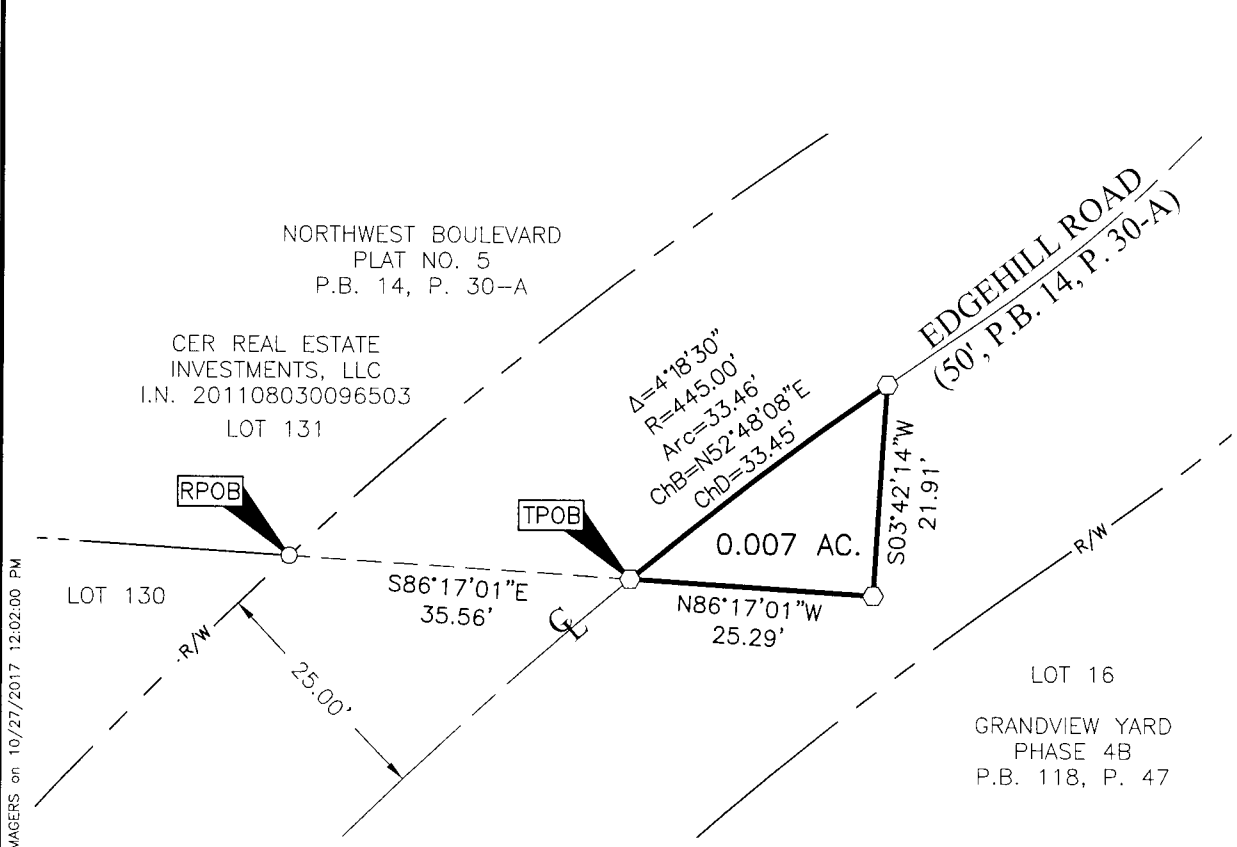
REFUGEE LANDS

CITY OF GRANDVIEW HEIGHTS, COUNTY OF FRANKLIN, STATE OF OHIO

Date: October 27, 2017

Job No: 2013-1505

Scale: 1" = 20'



J:\2013\1505\DWG\04SHEETS\BOUNDARY\2013\1505-VS-BNDY-12.DWG plotted by MAGER, MARCUS on 10/27/2017 12:02:08 PM last saved by MAGER, MARCUS on 10/27/2017 12:02:00 PM  
 Xrefs: 20101305-VS-BNDY-RWAY-N-02.DWG & 20140258-VS-PLAT-PHS4B\_LOTS.DWG & 20140298-VS-PLAT-SEC2.DWG

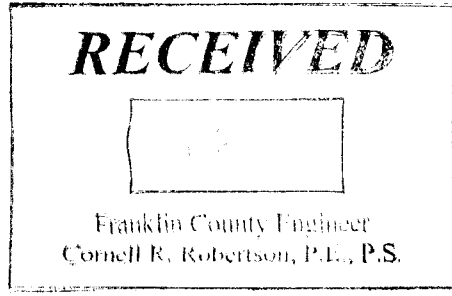
- = STONE FND.
- = MON. FND.
- = I.P. FND.
- = I.P. SET
- = MAG. NAIL FND.
- = MAG. NAIL SET
- ▲ = R.R. SPK. FND.
- △ = R.R. SPK. SET
- ◆ = P.K. NAIL FND.

I.P. Set are 13/16" I.D. iron pipes  
 30" long with cap inscribed EMHT INC.



**BASIS OF BEARINGS:**  
 The bearings shown hereon are based on the Ohio State Plane Coordinate System South Zone as per NAD83 (1986 adjustment). Control for the bearings was from coordinates of monuments 5-83 and 4-83, having a bearing of North 00° 22' 10" West, for a portion of the west limited access right-of-way of Olentangy River Road, established by the Franklin County Engineering Department using Global Positioning System procedures and equipment, and noted on Plat Book 118, Page 47.

**SURVEY NOTE:**  
 This survey was prepared using documents of record, prior plats of survey, and observed evidence located by an actual field survey in May 2015.



By John C. Dodgion 10/31/2017  
 John C. Dodgion Registered Professional Surveyor No. 8069 Date