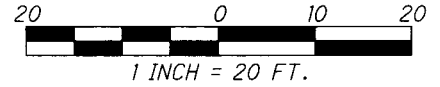




**PARCEL 1-WD**  
**CEMETERY RD./LACON RD. SIGNAL IMPROVEMENTS**  
**EXHIBIT B**

**FRANKLIN COUNTY**  
**NORWICH TOWNSHIP**  
**V.M.S. 3001**  
**CITY OF HILLIARD**



CEMETERY ROAD - 80' R/W

**PERTINENT DOCUMENTS USED:**

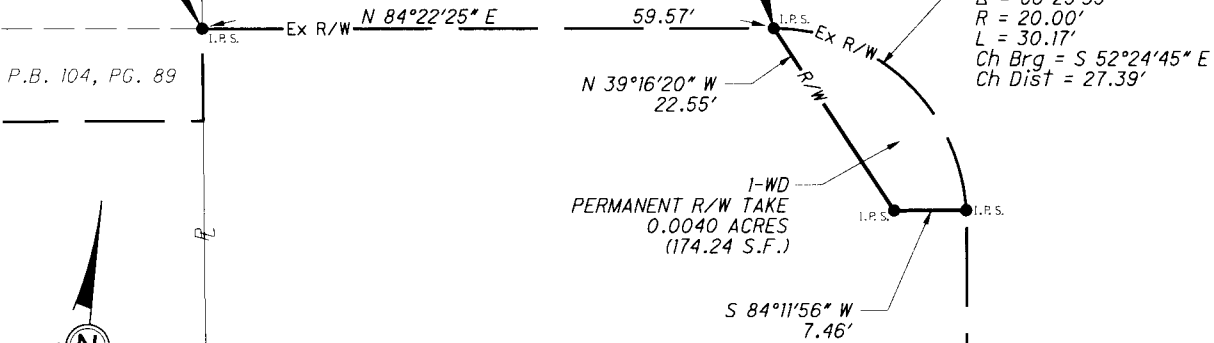
P.B. 33, PG. 28, P.B. 104, PG. 89,  
INST. 201612220176894, O.R. 10650, PG. E-10

CITY OF  
HILLIARD, OHIO  
O.R. 10650, PG. E-10

40' DEDICATED R/W  
P.B. 33, PG. 28

P.O.C.

P.O.B.



1-WD  
PERMANENT R/W TAKE  
0.0040 ACRES  
(174.24 S.F.)

LACON ROAD - 60' R/W  
P.B. 33, PG. 28

30' DEDICATED R/W  
P.B. 33, PG. 28

**LEGEND:**

- P.O.B. POINT OF BEGINNING
- P.O.C. POINT OF COMMENCEMENT
- I.P.S. 5/8" REBAR (SET) W/CAP STAMPED "GPD"

CEMETERY RD HOLDINGS LLC,  
AN OHIO LIMITED LIABILITY COMPANY  
050-002824-00  
INST. 201612220176894

LOT 231

EASTHILL ACRES  
P.B. 33, PG. 28

**BASIS OF BEARINGS:**

BEARINGS ARE BASED ON THE BEARING BETWEEN FRANKLIN COUNTY ENGINEER'S MONUMENT "SAMPSON" & FRANKLIN COUNTY GEODETIC SURVEY MONUMENT "0006" BEING N 48°34'51" E, AS RESOLVED BY GPS OBSERVATIONS, USING GRID NORTH OF THE OHIO STATE PLANE COORDINATE SYSTEM, SOUTH ZONE, NAD83 (2011).

LOT 230

**RECEIVED**

Franklin County Engineer  
Cornell R. Robertson, P.E., P.S.

*Steven L. Mullaney*  
STEVEN L. MULLANEY, P.S. 7900

11/10/2017  
DATE