



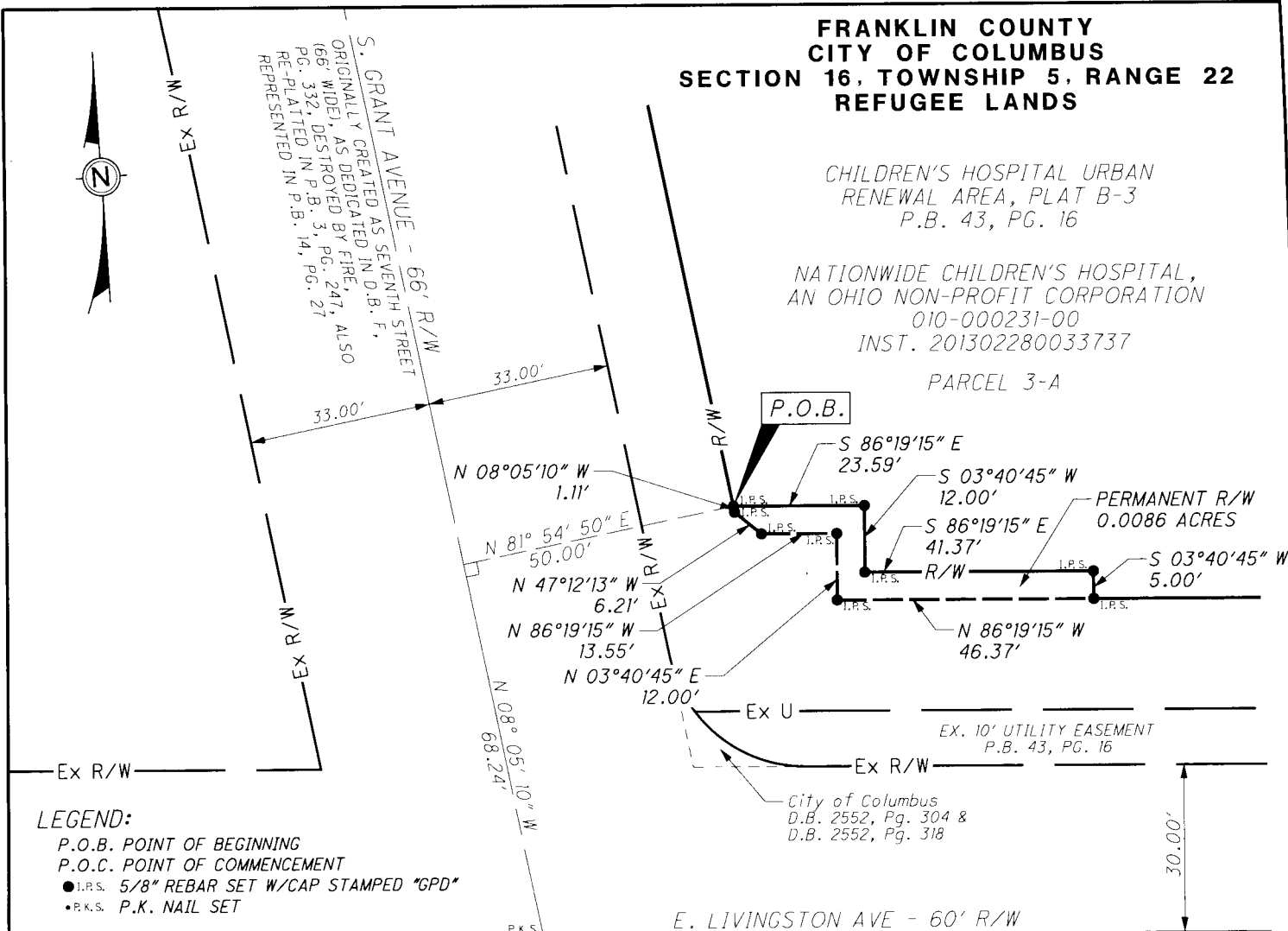
PERMANENT R/W PARCEL 26-WD1 EXHIBIT A

**FRANKLIN COUNTY
CITY OF COLUMBUS
SECTION 16, TOWNSHIP 5, RANGE 22
REFUGEE LANDS**

CHILDREN'S HOSPITAL URBAN
RENEWAL AREA, PLAT B-3
P.B. 43, PG. 16

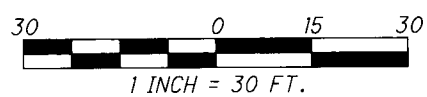
NATIONWIDE CHILDREN'S HOSPITAL,
AN OHIO NON-PROFIT CORPORATION
010-000231-00
INST. 201302280033737

PARCEL 3-A



LEGEND:
P.O.B. POINT OF BEGINNING
P.O.C. POINT OF COMMENCEMENT
● I.P.S. 5/8" REBAR SET W/CAP STAMPED "GPD"
● P.K.S. P.K. NAIL SET

E. LIVINGSTON AVE - 60' R/W
ORIGINALLY DEDICATED AS "SOUTH PUBLIC LANE"
(49.5' WIDE) AS DEDICATED IN D.B. F, PG. 332,
DESTROYED BY FIRE & REPLATTED IN P.B. 3,
PG. 247, ALSO REPRESENTED IN P.B. 14, PG. 27



BASIS OF BEARINGS:
BEARINGS ARE BASED ON THE BEARING BETWEEN
FRANKLIN COUNTY MONUMENTS "FRANK43" AND
"FRANK143" BEING S 87°56'15" E, AS MEASURED
ON GRID NORTH, OF THE OHIO STATE PLANE
COORDINATE SYSTEM, SOUTH ZONE (2011).

PERTINENT DOCUMENTS USED:
INST. 201302280033737
P.B. 43, PG. 16
FRA-70-14.48 & FRA-40-12.82

RECEIVED
OCT 05 2017
Franklin County Engineer
Conchit R. Robertson, P.L., P.S.

Steven L. Mullaney
STEVEN L. MULLANEY, P.S. 7900

10/5/2017
DATE