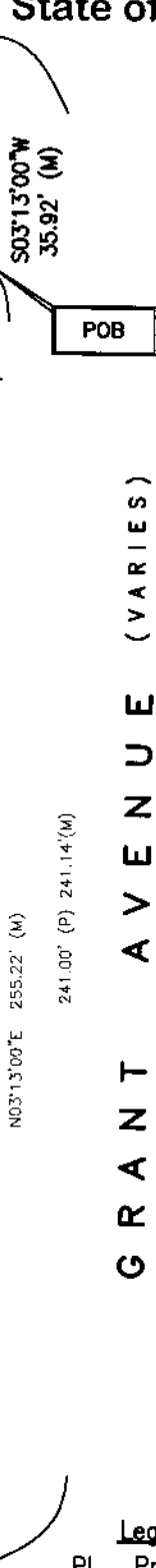
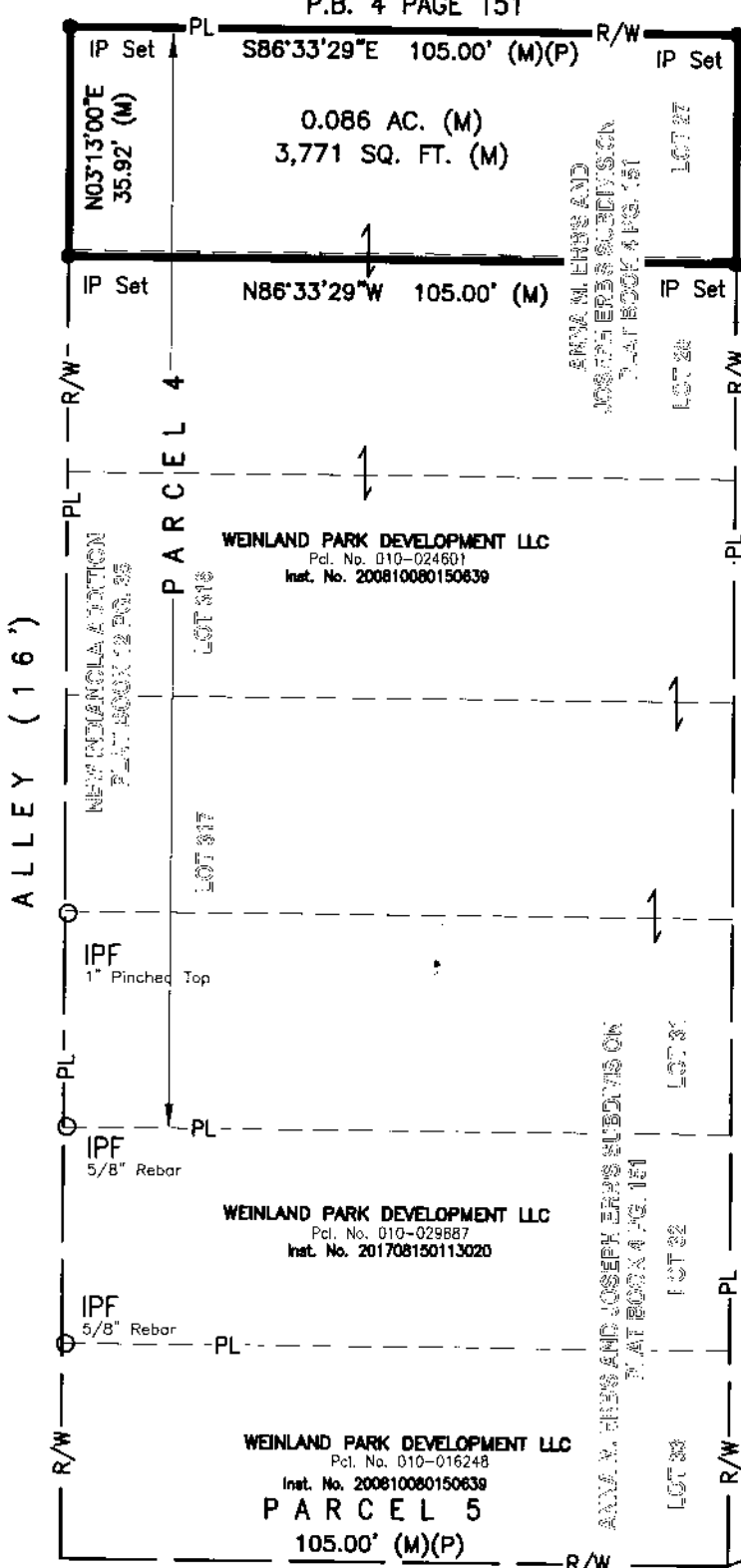
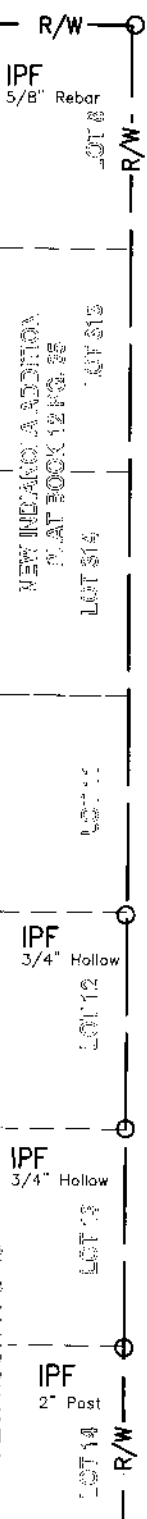


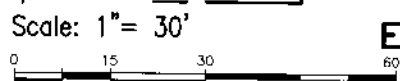
0.086 Acre LOT SPLIT
Quarter Township 4,
Township 1, Range 18
United States Military Lands
City of Columbus
Franklin County
State of Ohio

ANNA M. EHRB AND
JOSEPH EHRB SUBDIVISION
PLAT BOOK 4 PG. 151

ANNA M. EHRB AND
JOSEPH EHRB SUBDIVISION
PLAT BOOK 4 PG. 151



RECEIVED
AUG 25 2017
Franklin County Engineer
Cornell R. Robertson, P.E., P.S.



BASIS OF BEARINGS

The bearings shown on this plat are based on the Ohio State Plane Coordinate System, South Zone, NAD83 (CORS96). Said bearings originated from a field traverse which was referenced to said coordinate system by GPS observations and observations of selected stations in the Ohio Department of Transportation Virtual Reference Station network. The west right of way line of Grant Ave has an assumed bearing of N03°13'00"E and is designated as "basis of bearing" for this plat.

Field survey was conducted on 08-14-17. All monuments found are in good condition unless otherwise noted.

We hereby certify that the foregoing Boundary Survey was prepared from actual field measurements in accordance with Chapter 4733-37 Ohio Administrative Code.

All iron pins set are 5/8" rebar, 30" in length with yellow plastic cap with "EP FERRIS SURVEYOR 8342" inscribed on top.



- Legend**
- PL Property Line
 - R/W Right-of-Way
 - Iron Pin Found (IPF)
 - Mag Nail Found
 - Iron Pin Set
 - (D)(P) Deed or Plat
 - (M) Measured Value

BY: *Matthew Lee Sloat* 8/24/17
Matthew Lee Sloat, P.E., P.S.
Registered Surveyor No. 8342

DRWN BY CRK CHK BY MLS DATE 08-24-17

E. P. FERRIS
AND ASSOCIATES
INC

CONTACT:
880 KING AVENUE
COLUMBUS, OHIO 43212
(614) 299-2999
(614) 299-2992 (Fax)
www.EPFERRIS.com

Consulting Civil Engineers and Surveyors